

SilverFast[®] SE Plus

Optional «Plus» Upgrade

6



LaserSoft Imaging[™]



English

Contents

<i>Activating SilverFast</i>	4
<i>Plus Upgrades</i>	5-6
How do I obtain a Plus Upgrade?	5
The Plus Upgrade functions	6
<i>USM dialog with scaleable prescan</i>	8
<i>Descreening</i>	9-10
<i>Multisampling</i>	11
<i>JPEG 2000</i>	12
<i>SilverFastAACO</i>	13
<i>PrinTao – Extended print dialogue of SilverFast SEPlus</i>	14-15

Activating SilverFastSEPlus

After updating a *SilverFast* version, a new activation mechanism launches.

The previously used 20-digit code is replaced by a 30-digit code, consisting of 6 groups of 5 symbols each. Numbers between 2 and 9, as well as letters between "A" and "Z" may be entered. Please note that no "O"s or "I"s are used.

General Information

First Name:
 Last Name:
 Company:

Serial number for older versions
 if your serial number has 20 characters, please enter this number here:

Serial number for newer versions
 if your serial number has 6 fields with 5 characters each, please enter this number here:

First Name:
 Last Name:
 Organization:
 Serial number:

General Information

First Name:
 Last Name:
 Company:

Serial number

1.2

Plus Upgrade

How do I obtain a *Plus Upgrade*?

In which *SilverFast* versions are *Plus Upgrades* possible?

Plus Upgrades are available for almost all full versions of *SilverFast SE*.

Performing a *Plus Upgrades* for *SilverFast SE* merely requires an optional serial number.

Where are the *Plus Upgrades* available from?

Plus Upgrades may be obtained from your Imaging dealer, or directly ordered from *LaserSoft Imaging*.

How can I activate the *Plus Upgrade*?

A special activation code is needed for this function. This 30-digit code is supplied when purchasing the software.

The *Plus Upgrade* functions

Detailed descriptions of all new functions can be found in the overview on the following pages. The following functions are implemented in the *Plus Upgrades*:

Plus Upgrade for SilverFastSE

Freely scalable USM preview: The USM dialog and its preview windows may now freely be resized and, by this means, enlarged. This can be done by click dragging the lower right corner of the window.

By this, a better control of the image is achieved by allowing a much larger preview of the final sharpening effects.

Auto-Descreening: The newly developed descreening in *SilverFast* is able to detect the actual screen of the image automatically.

Multisampling: Multiple sampling can be applied for some scanners that show a visible, strong noise in the shadow areas, in order to eliminate the artefacts.

JPEG2000: The new *SilverFastSEPlus* versions allow saving images in a “JPEG2000” (*.JPF) format.

This option may only be chosen once the scan process has been started, and if the scan mode is set to “Normal (file)”.

SilverFastAACO (Auto Adaptive Contrast Optimisation):

SilverFastAACO is an excellent tool for the correction of dark, too much contrast bearing image parts while preserving the details in the highlights.

It operates automatically when selected, but can also be manipulated by presets.

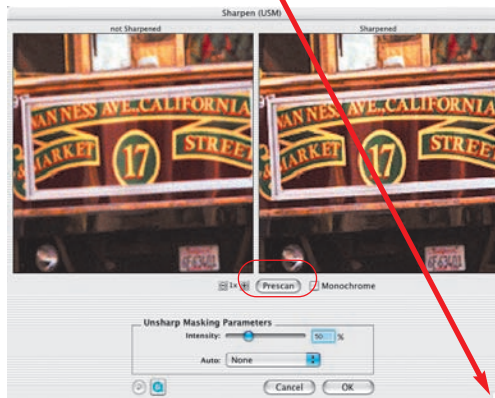
Extended print dialogue with copy function: This dialogue, which is already known from the *DC*- and *HDR*-versions, may now also be activated in *SilverFastSEPlus*.

It differs from that of the *VLT* version in that it also has an included copy function for scanner; similar to that of a photocopier. All activated frames in the scan window will be copied to the selected paper format in a 1:1 scale with the exact positions and proportions.

USM dialog with scaleable prescan

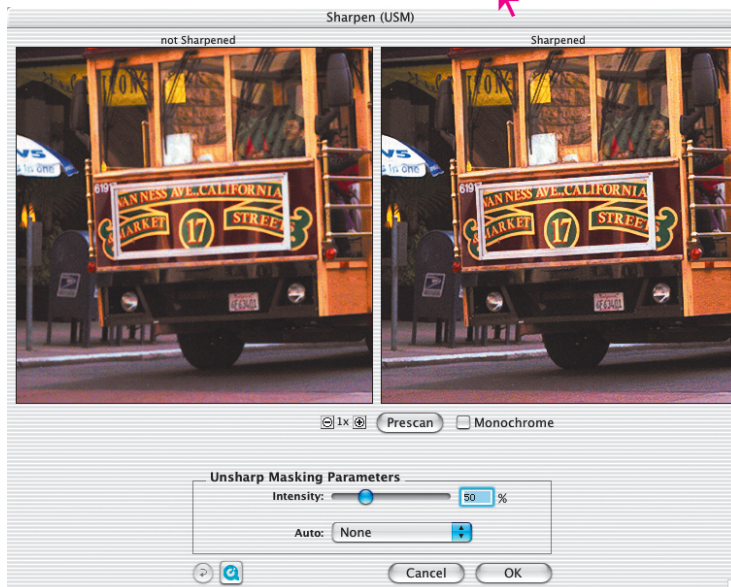
The new versions of *SilverFast* now contain the fully scalable USM-dialogue. By this means it is possible to obtain a realistic sharpening preview on a larger part of the image.

The size of the dialog box is now resizable by means of a resizing button.



By clicking and dragging the corner button, the USM window can be expanded up to the entire monitor size. Initially, the contents of the prescan window are only enlarged by pixel-enlargement – the same effect as pressing the “+” button.

The real expansion of the visible area is achieved by keeping the “Shift” button pressed while clicking the “Prescan” button (i.e. it functions like an “Update-button”). (Ref. Illustration lower left).



Resizing the window preserves the captured part of the image. (Ref. Illustration lower right).





*Availability

...Studio-Versions: have the new full functionality including the two full automatics.

...Ai-, ...DCPro-, ...HDR-Versions: Offer the complete descreening dialogue with preview, manual selection and automatic screen-detection. The fully automatic functions are not included.

...SEPlus-Versions: offer the descreening dialogue, without preview but with manual screen input and also contains the two automatic descreening options.

...SE-Versions: contain the new descreening, the descreening dialogue without preview, but with manual screen input. The two fully automated functions are not available.

De-screening an image*

From Version 6.4.2r4 onwards, *SilverFast** uses a completely new descreening in order to remove any screen dots from printed images.



Image taken from a magazine, enlarged 300%

Left: normal Scan without descreening. The moiré on the print is clearly visible...
Right: Scan with descreening. The moiré is completely removed.

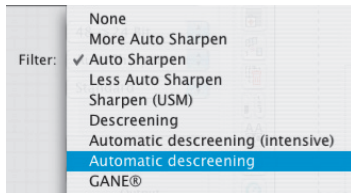
Adjusting the Frame of the Image*

To activate *SilverFast*'s descreening, select one* of the menu points* from the filter menu, located within the frame palette:

- Automatic descreening
- Automatic descreening (intensive)
- Descreening

The newly developed descreening in *SilverFast* is able to detect the actual screen of the image automatically.

“Automatic descreening” and “Automatic descreening (intensive)” are fully automated and are available without any further dialogues. In case “Descreening” is selected, a sub-menu will appear, within which more individual parameters may be set.



Automatic Descreening

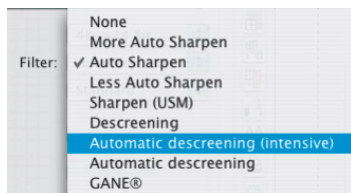
This function launches a fully automated descreening of the image. No more dialogues or menus are necessary. The “Automatic descreening” is recommended for medium and fine screens. The result is only visible after the final scan and is not displayed in *SilverFast’s* preview window.



Please note that the image to be descreened consist of enough image elements and not only textures and graphics.

Automatic Descreening (intensive)

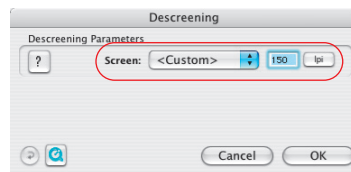
The “Automatic descreening (intensive)” function operates like the “Automatic descreening” function, but in addition uses a specialized calculation algorithm. This selection is recommended for cruder screens and low screen width. The intensive descreening needs more system resources and is more time intensive. The result will only be visible in the final scan and not in *SilverFast’s* large preview window.



Descreening

This dialogue allows an automatic and manually adjustable descreening.

The result will only be visible in the final scan and not in *SilverFast’s* large preview window.



Multiple Sampling



Multiple sampling can be applied for some scanners that show a visible, strong noise in the shadow areas, in order to eliminate the artefacts.

From Version 641r6 onwards, *SilverFastAiStudio* and *SilverFastSE-Plus* allows any scanner that runs with *SilverFast* to perform the multi-sampling function. This also includes scanners that were not initially meant to support this function.

This does not work with scanners having weak positioning behavior. Frankly speaking, most scanners are mechanically not precise enough and overlaying several scans for noise reduction would result in "unsharp, out of focus" scans. Therefore we had to develop a special process that would eliminate the lack of mechanical precision between the sampling scans.

This process is called *Multi-Sampling with Auto-Alignment*. The result is sharp scans with the noise artefacts eliminated or significantly reduced depending on the number of samples (4, 8 or 16). Now, in principle every scanner can profit from this method which as a result enhances the usable dynamic range showing scans with nice shadow details. Another benefit is, that with a much cleaner scan, so much more Unsharp Masking can be applied for a crisper image, without pronouncing the noise artefacts (since they are gone).



Multi sampling can be activated with its own button. The number of scans per scan frame can be 1, 4, 8 or 16 (the number depends on the scanner). A small number in the button will show the number of sample scans.



Please note that the entire scan time increases proportionally to the number of sample scans.



* Attention!

This function is hardware dependant and is only available for some scanners.

Multisampling is done by software and is available for all *SilverFastAiStudio* und *SilverFastSEPlus* Versions.

Only a few scanners use the multi-sampling while the CCD is not moving. The scanner stops and reads the CCD more than once, according to the preset number of sampling scans. The advantage lies in the faster speed (not much longer than a standard scan), but there is also perfect precision of register. In general, there is no loss of sharpness with this method.

JPEG 2000

Images may now be saved in the new “JPEG2000” (.JPF) format in all new *SilverFast SEPlus* versions.

This option may only be chosen once the scan process has been started, and if the scan mode is set to “Normal (file)”.

Scan mode “Normal (file)”

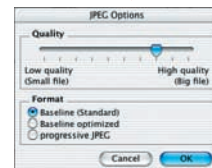
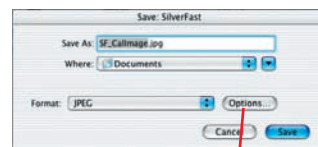
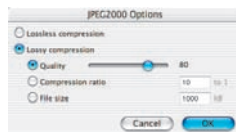
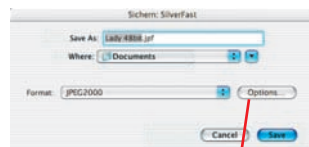
These adjustments advise the software to scan the active frame automatically as a file on to the hard disk.

The setting in the “save” dialog will determine which file format will be written. The “save” dialog will appear when the button “Scan” is clicked.



File format: You can choose between various file formats under “Format”.

In the case of some formats, i.e. “JPEG2000” and “JPEG” an additional box “Options ...” will become active. Additional parameters for these special file formats can be set up.



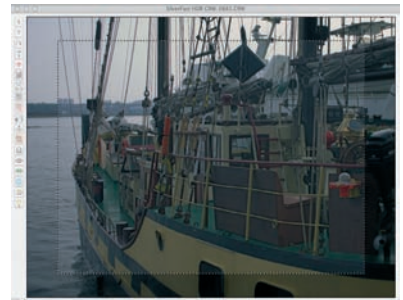
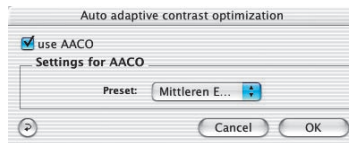
SilverFast AACO

SilverFast AACO is an excellent tool for the correction of dark, too much contrast bearing image parts while preserving the details in the highlights.

AACO is activated by clicking the respective button located in the vertical toolbar, left of the preview window.



A dialog will open, and the therein set parameters are directly projected onto the current image.



For checking the before/after effect, AACO can be activated and de-activated by means of the checkbox.



PrinTao



Extended print dialogue of SilverFast SE Plus

In the standard versions of SilverFast SE, the “Print” button merely opens a simple printing dialogue. Only single scan frames may be printed out. The *Plus* versions use this button to open the extended print dialogue.

Contents of the advanced print dialogue

Page number
Page breaker

Page
Add or delete

Image list
Choosing scan frames in the preview window.

Printer settings and choice of ICC printer profile

Page and layout settings
Presets which size of the image should be considered in the print., and 1:1 copy function.

Thumbnail of chosen image in the image list

Start printout

Print resolution of active image in the print dialog

Close dialogue

Tools

- Add
- Delete
- Stacking sequence
- Rotate
- Reflect vertically
- Reflect horizontally
- Centre
- Adjust
- Cut
- QuickTime movies

Rulers
Measurement unit: cm

Window of printed page

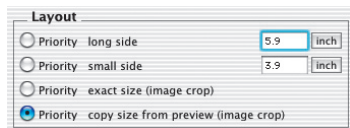
Printing area
Marked by violet frame

The basic functions are identical to the extended print dialogue in the *VLT* (ref. *SilverFastDC*., *HDR*..) A detailed description can be found in the respective paragraphs of “Chapter6.11” of the big *SilverFast* manual.

1:1 copy function

The main difference is the 1:1 copy function in which functionality of a photocopier is simulated.

This function is activated by clicking the “Priority, exact size (image crop)” button within the “Layout” area – all scan frames in the preview window are copied 1:1 to the chosen paper format including their exact positions and proportions.



LaserSoft Imaging AG
Luisenweg 6-8
D 24105 Kiel • Germany
Tel.: (+49) 431-5 60 09-0
Fax: (+49) 431-5 60 09-98
eMail: Info@SilverFast.de
Internet: www.SilverFast.de

LaserSoft Imaging, Inc.
3212-B Gulf Gate Drive
Sarasota, FL 34231, USA
Fax: (+1) 941-925-9417
eMail: info@SilverFast.com
Internet: www.SilverFast.com

LaserSoft Imaging™