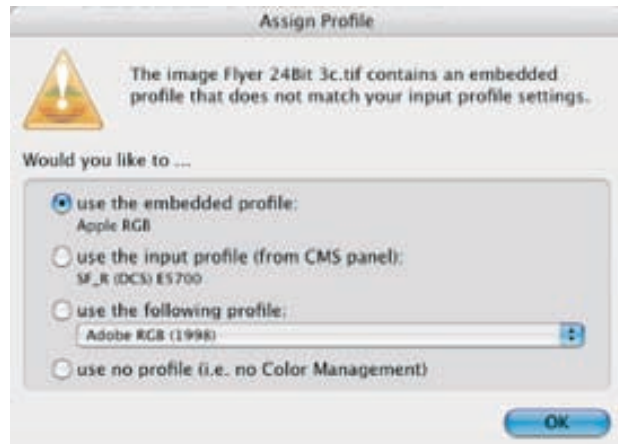


CMS-Dialogue in *SilverFastDC... / -HDR...*

The Colour-Management in all versions of *SilverFastDC... / -HDR...* has been improved from *SilverFast* version 6.4.3r3 or better.

Under certain circumstances, the “Assign Profile”-dialogue appears initially, when opening the main dialogue of *SilverFastDC... / -HDR...*



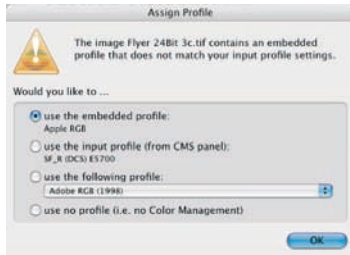
This is the case when *SilverFast* does not find a profile within an image, or if it finds a profile which conflicts with the current CMS settings, i.e. if a classic “Mismatching” occurs.

The idea is to let the user choose which colour-management shall be done when opening the image. This choice is only applied to the current image!

Overwrite the chosen settings in the CMS settings:

- a) for the matching of INPUT -> INTERNAL
- b) the ICC input profile (ICM for Windows).

”Assign profile“-Dialogue



„Assign profile“-dialogue for images with embedded profile.



„Assign profile“-dialogue for images without an embedded profile

The opening text of the ”Assign profile“-dialogue contains the image name.

The lower part of the dialogue offers the choice of two to four procedures:

1) Use the embedded profile

This option is available only if the image contains an embedded profile and *SilverFast* is able to find it.

The name of the embedded profile is displayed. This setting uses the embedded profile and overwrites possible other settings within the CMS-dialogue.

(“Colour Management / Input-> Internal” and “Profiles for ColorSync (ICM) internal”).

use the embedded profile:
Apple RGB

2) Use Input profile (from CMS panel)

Here the name of the chosen profile (CMS / Profiles for ColorSync / ICM) is displayed.

If no Profile is chosen, this setting is missing. These settings would ignore any embedded profile.

use the input profile (from CMS panel):
SF_R (DCS) E5700

3) Use the following profile

The menu offers the possibility to freely choose a profile. Selecting this option causes *SilverFast* to ignore any profile embedded in the image.

use the following profile:
Adobe RGB (1998)

4) Use no profile (i.e. no Colour Management)

This setting deactivates the colour management for the image. No calculations are done, and any embedded profile would be ignored.

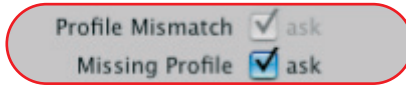
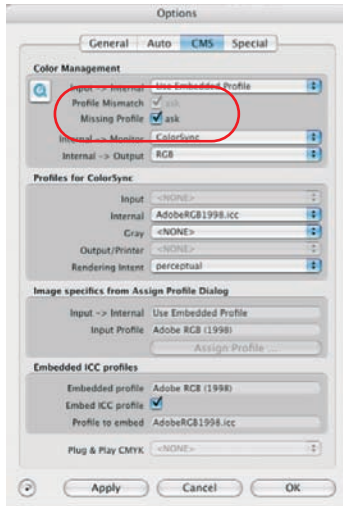
use no profile (i.e. no Color Management)

CMS-Dialogue in *SilverFastDC...* / *-HDR...*

Conforming to the "Assign profile"-dialogue, the CMS palette was altered in the fields "Colour Management" and „Image specific settings“.

Colour Management

Two new selection fields can be found here. They determine if the "Assign profile"-dialogue is shown in one or the other "Conflict" cases:



Profile difference

A conflict which arises when a "Profile mismatch" is found. This is the case when the following conditions are present:

- The user has chosen "ColorSync" / "ICM" for the internal profile.
- The opened image already contains an embedded profile which is different to the "Input" profile (this being the conflict).

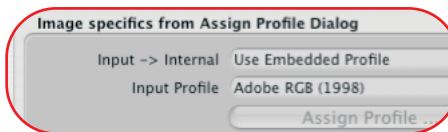
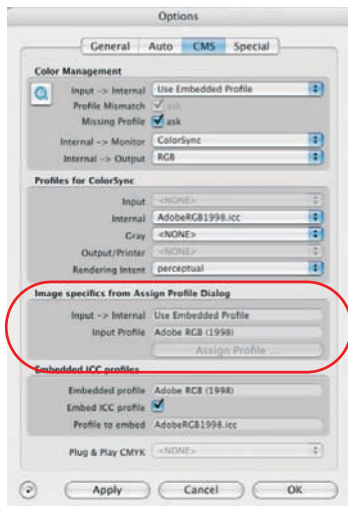
Missing profile

This conflict arises when the following conditions are present:

- The user has chosen "Use embedded profile" as an internal -profile.
- The opened image does not contain an embedded profile (this being the conflict).

Image specific settings of the “Assign profile”-dialogue

In this part of the CMS dialogue, the settings chosen for “Assign profile” are displayed. I.e. if the embedded profile is to be used, a different one or none at all (no CMS).



Input -> Internal

This shows if an embedded profile or no profile is to be used.

Input profile

This shows if none or the ColorSync/ICM profile is to be used.

Button “Assign profile”

Clicking this button opens the “Assign profile” dialogue, in order to change the individual settings for the image at a later time.

This section is only active if one of the two conflicts (previous page) is present.