

PrinTao – The Enhanced Print Dialogue in *SilverFast*



What is *PrinTao*?

In simple terms *PrinTao* is a very enhanced and ultimately powerful print- and layout dialogue with useful features and high productivity. There are numerous functions especially designed and tailored to the requirements of photographers. Especially when having to print many images on i.e. large format printers *PrinTao* will show its strengths. The feature overview:

PrinTao Features

1. Imaging Functions

- a. Position images freely 302-303, 306-304, 309, 319, 322, 326-327, 328
- b. Rotate or mirror images 303, 309
- c. Scale images 302-303, 308-309, 324-325
- d. Crop images 303-305, 309, 319-320, 325
- e. Center images on printing page 302-303, 309
- f. Align images with guides 326-327
- g. Fit images to page 302-303, 309
- h. Zoom images inside their frames 305, 325
- i. Adjust selected image part 305

2. Page Functions

- a. Generate arbitrary number of pages 306-307
- b. Save and load pages with layout embedded 318
- c. Individual or sets of images can be transferred to the printing page from the image list 302, 306, 309, 319-321
- d. Image dimensions can be set with priority to either the long or short side 307
- e. Images can overlap and be sent to front or back 306-307, 309, 328-329

3. Page View

- a. A page view can be zoomed 299, 323
- b. Any page out of multiple pages can be selected with a click of the mouse. 307, 321

4. Text Function

- a. Text input can be attached to images 310-317
Position of text can be set to the left, middle, right, above or under the image. Alignment left, centre or right is possible. Fonts as well as font size and colour can be freely chosen.
- b. Attach text from meta tags to the image 314-316
Easily attach meta tag text, e.g. image name or EXIF info, to the image. All texts may automatically be attached to the selected images.
- c. Copyright text function 310, 317
Copyright text can be transferred to an arbitrary number of images with desired colour, font and font size with a single command.
- d. Free text function 316, 328-329
Any kind of text (with arbitrary colour, font and size) can be placed e.g. on the top of the page or freely on the page.

5. Image-Templates

a. Standard-templates 319-322

From the standard set of templates, any one template can be transferred to one or several pages. Various pages can be modified with different templates. Images can be transferred to a page's template via *drag and drop* or by a button. Images in a template can all be replaced or individually replaced.

A template can be automatically assigned as the default for subsequent pages.

Single images can be zoomed (scaled) inside the frame while the desired area can be selected.

b. User-defined templates 319-320

Current templates can be freely altered and saved as user-defined templates. It is also possible to create new templates and use them as user-defined templates.

c. Template-generator 319-320

A template-generator allows creation of templates for any amount of images on the page, such as 3x3 or 5x8 or 7x7 pictures.

Existing generated templates can be altered freely and saved as user-defined templates.

6. Colour Management 331

Printer ICC profiles and rendering intent can be chosen and allocated to all pictures to be printed.

Which SilverFast Versions include PrinTao?

PrinTao is a component of all scanner independent *SilverFast* versions, in which it is implemented into the *VL.T*.

Other than that, *PrinTao* is also a part of every *SilverFastAiStudio* version and may be launched by clicking the respective button located in the vertical toolbar, left of the preview window.

SilverFastDCProStudio and SilverFastHDRStudio

The *Studio* versions of *SilverFastDCPro* und *SilverFastHDR* contain additional functions in *PrinTao*:

- Sets of **default Templates** for automatic alignment of the images on the printing pages.
- **Selfconfigured templates** for page layout are saveable.
- Freely define and positionable **picture text** *.
- Selectable **EXIF/IPTC data** to be embedded into Image text.

Users, which have the optional *SilverFastPhotoProof* function enabled, will find the additional *PhotoProof* settings in *PrinTao*, for embedding a FOGRA media wedge and the according reference profiles. Please examine chapter *SilverFastPhotoProof* for more information.

SilverFastAiStudio

Since the scanner-dependent *SilverFast* versions do not have direct access to the previously saved image, the functionality of some *PrinTao* functions are different or reduced. For example:

- The file browser is not available. Instead, all drawn image frames are displayed within the image list.
- The input field for textures is integrated into the popup menu and may not be floating. The functionality is reduced accordingly.
- There are no templates.



*Attention

This function is available in the *Pro* and *Studio* versions only and operate only under Mac OS 10.3.1 or newer.





Contact sheet of Overview
Contact sheet of Album

PrinTao

PrinTao in VLT

Via the *PrinTao* button in the *VLT* the user gets to choose whether to create contact sheets of the images in an album or overview as well as to print a random of images from an album or the overview.

Page number
Page breaker

Headline
free position

Page
Add or delete

Printing area
marked by purple border

Tools

- Add
- Delete
- Rotate
- Stacking sequence
- Reflect vertically
- Reflect horizontally
- Centre
- Adjust
- Cut
- Image text
- Export as XML
- QuickTime help

Navigator / File browser
Browser for selecting images and templates

SilverFastPhotoProof
(only in Studio versions)

Printer settings
and selection of ICC profile

Page- and Layout settings
presets whether the long side, the small side or the exact size of the images should be used for the printing page

Thumbnail preview
of image selected in image list

Scaling and image size
of the active image within the printed page

Start printout

Output resolution
(slider and edit field)
of the active image within the printed page

Close dialogue

Window of printed page

Image text
here: lower margin, centred

Active image
Marked by blue surrounding

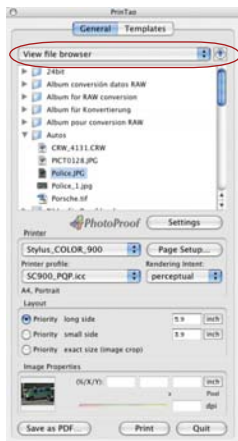
Image information (image below cursor)
Path, file name, output size, output resolution

Rulers
Measurement unit: cm

Scaling of printed page

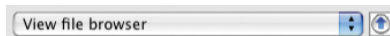
Copyright text
here: right margin, left hand

Navigator / File Browser in *PrinTao*



The first step in *PrinTao* is the selection of images to be printed. This can be done by using the integrated navigator or file browser. The popup menu in the head of the navigator contains several inputs by which individual images or entire directories may be selected.

The contents of the chosen directory is displayed in the list.



By means of the little blue arrow, the directory may be switched to the parent directory.

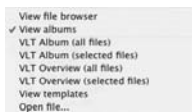


The menu contents:



- **View file browser:** The contents of the current directory are displayed.

The path of the directory is shown above.



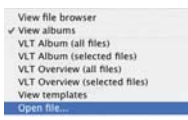
- **View albums:** Displays all albums that have been previously created in the *VLT*.



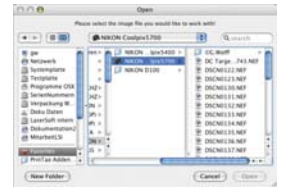
- **VLT Album (all files):** Displays all images of the current album.



- **VLT Album (selected files):** Only displays the selected images within the album.



- **VLT Overview (all files):** Lists all images in the current overview of the *VLT*.
- **VLT Overview (selected files):** Lists only selected images in the current *VLT*.
- **View templates:** Displays all current templates that were created with *PrinTao*.
- **Open file...:** By this “Open” dialogue, a single image may be dragged directly on to the print page of *PrinTao*.



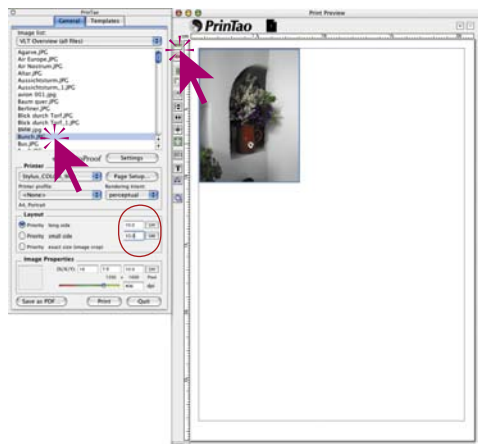
After choosing the image directory and selecting the images that are to be printed, these images are passed on to the print page and arranged there. The next paragraph describes the procedure for printing single images:

Print Single Image

- ✓ VLT Album (all files)
- VLT Album (selected files)
- VLT Overview (all files)
- VLT Overview (selected files)

By means of the navigator popup menu, an image directory, an album or the overview of the *VLT* may be chosen. The images are displayed in the dialogue window.

Select an image by a mouse click in the image list and enter the values for the desired printing size in the *Layout* (here 15x8cm)

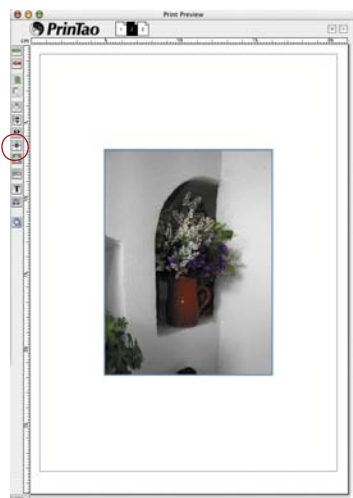


The dimensions of each individual image can be changed after placement on the print page document by changing the *image settings* $%/X/Y$ numerically. The actual output resolution is symbolized by the rainbow gradient coloured slider, underneath the size input box. The values itself are displayed in the input box next to the slider. The image file features a ready-to-print resolution if the handle of the slider is within the yellow or better green area of the slider.



By clicking the *Add* button, the image will be passed on to the printer and automatically be placed in the upper left corner of the printing sheet by *SilverFast*.

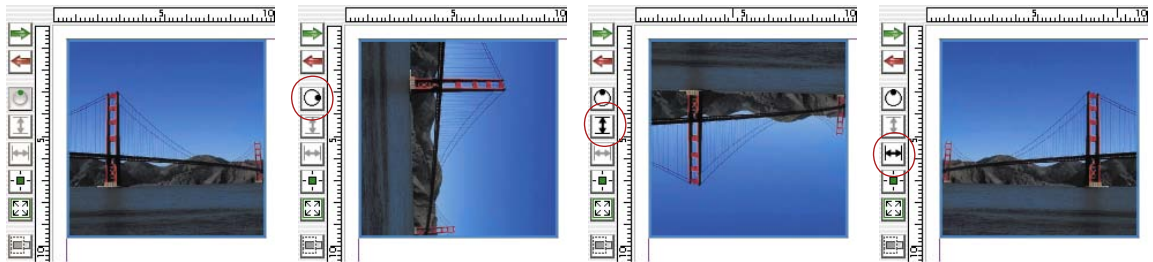
If you want to change the placing or the size, this can be done by means of the buttons located left of the printing window.



Left: Centre image in printout
Right: Fit image to printout



The orientation is also alterable. By clicking the *Rotate* button, the image is rotated in 90° steps. By means of the *Invert* buttons, the image may additionally be inverted vertically and horizontally.



All previous changes left the image in its original size-relation. If you want to change the proportions of this image, simply activate the *Cut image* option. In the activated mode the selection can be done in an active image by click-dragging the image. Doing this on the edges allows cutting of the image. Clicking and dragging will reestablish a once cropped image to its original dimensions, admittedly only within the actual dimensions of the original image.

If the *Cut image* mode is deactivated, the proportions of the image may not be altered; only size, position and orientation is alterable. A cut image can be protected against further changes.



Lower left: Image in its original proportion (Cut mode deactivated)

Centre: Cut image (Cut mode activated)

Right: Cut image fit to page (Cut mode deactivated)



Quick and easy Image Cropping by Using Key Shortcuts

There is an even faster alternative to the regular cropping mode, using key shortcuts:



- The image can be cropped directly (while cropping mode is deactivated) by pressing the *Alt* key while click-dragging the frame or corner of an image.



- The image can be cropped symmetrically (while cropping mode is deactivated) by pressing the *Alt* and *Shift* key while click-dragging the frame or corner of an image. Dragging the frame will move the opposite frame edge accordingly. Dragging the corner of a frame edge will move all corners of the frame symmetrically.

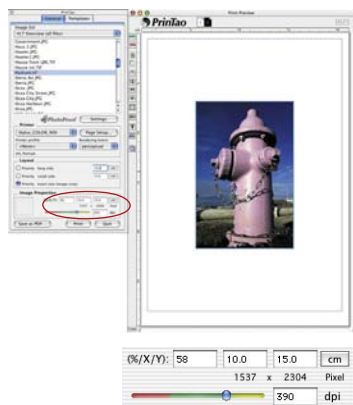


Image after import with priority "exact size", "10x15 cm". The right size of the image shows that a small strip of the image has been cropped automatically.



Reestablish the original proportions by "Alt" upon corner.



Cropping by "Alt" upon corner.



Symmetrical cropping by "Alt + Shift" upon the edges.

Please note that the input box for the image settings (%/X/Y) will display the actual dimension at all times.

Changing the Image Clipping within the Image Frame



The image clipping of a cropped image can be changed afterwards within the image frame.

Pressing the *Shift* key while click-dragging upon the image will move the image clipping inside the frame.

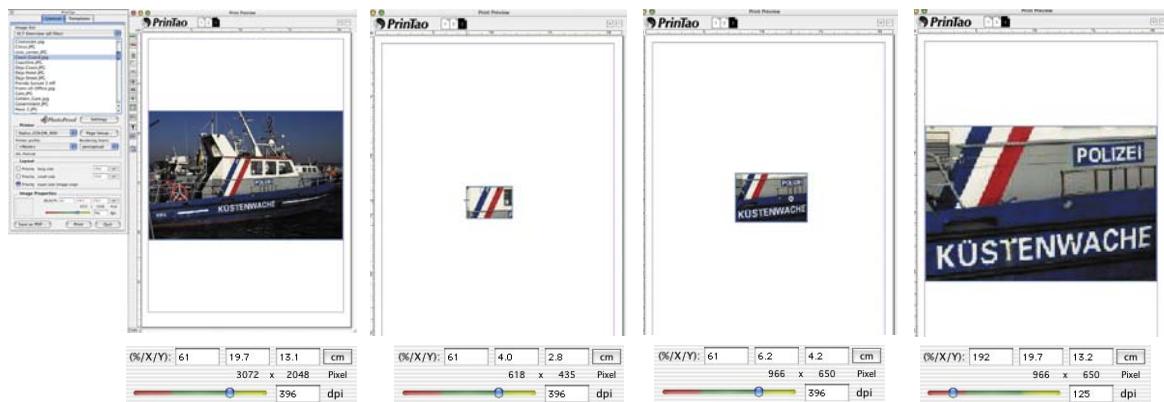


Image after import and adaptation to page size.

Cropped image.

Rearranging the image clipping while pressing the shift key.

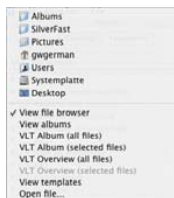
Scaling by readapting to the page size.



If the cropping mode is not activated, the image can be scaled proportionally by pressing the *Shift* key. For that purpose the image frame can simply be resized by touching the the edge or corner of it.

Transfer Several Images to Printout

By means of the navigator popup menu, an image directory, an album or the overview of the VLT may be chosen. The images are displayed in the dialogue window.



Images are to be selected from this list by the *Add* button to pass them on into the printout window. *SilverFast* will automatically try to place these images in an optimum manner on the print sheet.

In case the printing area is not enough, *SilverFast* will ask if more printing sheets are to be used.

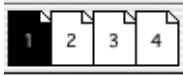


By clicking "New", *SilverFast* automatically attaches the necessary additional pages.



Choosing interleaving causes all images on the current page to be added. Supernumerary images are collected at the lower right edge of the printing window. They may then manually be arranged, deleted, moved etc.





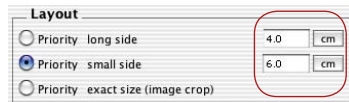
The number of pages as well as the number of the active page are displayed above the window. The pages may be switched by clicking the respective thumbnails.



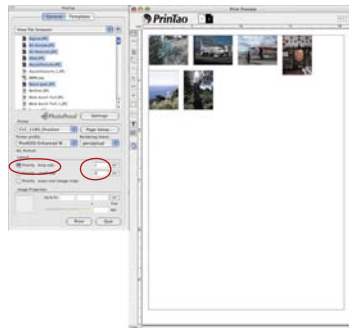
By clicking the *Plus* and the *Minus* buttons respectively, printing sheets may be added or deleted manually.

In case there are many pages, the images may be switched between these pages:

- **Moving images:** Select and click-drag the thumbnails of the current page and simply drag them on to the desired page. These images are then removed from their original position and disappear from that page.
- **Copying images:** Select images of the current page and, while keeping the “Shift” key pressed, drag the thumbnail on to the desired page. The images will then remain on the original page as well.

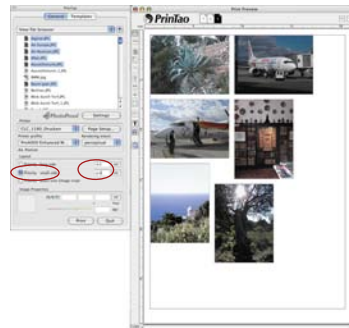


The size of the images that will be printed out is adjustable in the presets under the *Layout* menu. The *Priority* determines if all images use the same long page, the same short page or the exact entered values on the printout.



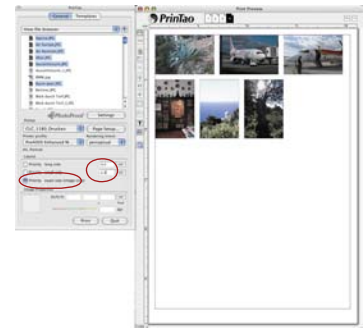
Priority long side

The selected images were all inserted with a long page of 4 cm.



Priority small side

The selected images were all inserted with a short page of 8 cm.



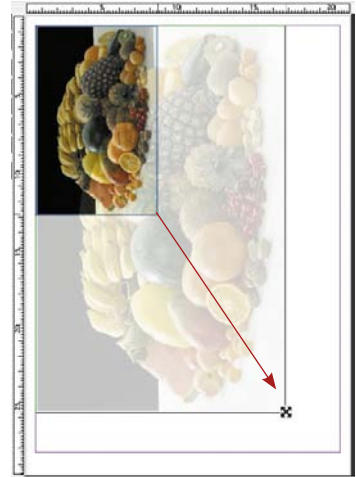
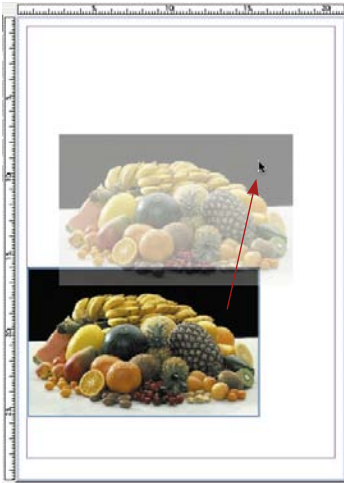
Priority exact size

The selected images were all inserted with an exact size of 4x8 cm. Since in this case the image contents were larger, they were cut to 4x8 cm.

Naturally all single images may also be varied in size by click-dragging them manually in the printout window:

Click-dragging within an image moves the entire image.

Click-dragging an edge / a corner alters the image size (proportionally if the “Cut image” button is deactivated, i.e. if it appears grey).



Control buttons

By means of the navigation buttons left of the print window, rotating, inverting etc. Is possible:



Add: The images selected and marked are passed on to the printing window.

Delete: The selected images are removed from the printout. Clears the selected picture frame.

Stacking sequence upwards: in the printing area marked pictures are shifted upward one level in the stacking sequence.

Stacking sequence downwards: in the printing area marked pictures are shifted downward one level in the stacking sequence.

Rotate: The selected image is rotated in 90° steps. The dot at the circle shows the orientation.

Reflect vertically: The active image is reflected vertically in the print window.

Reflect horizontally: The active image is reflected horizontally in the print window.

Centre on page: Places the image centrally in the printout

Adapt to page size: The active image is proportionally adapted to the printing area.

Cut image: If this mode is activated the are of the image can be selected manually by click-dragging the mouse. If this option is deactivated, the proportions of the image may not be changed; only size, position and orientation may be altered.

Text tools*: With the help of this feature, any text may be added to images and additional text may be entered and placed freely on the print page.

Saving, loading and exporting: The page layout may be saved, re-loaded for future use and also be exported together with the images.

QuickTime movies: A short video that introduces *PrinTao*.

*Attention!

This function is available in the Pro- and Studio-Versions only and operate only under Mac OS 10.3.1 or newer.

Adding text to images*



*Attention!

This function is available in the Pro- and Studio versions only and operate only under Mac OS 10.3.1 or newer.

In *PrinTao* a very high performance text tool is contained, which hides itself behind the button with the **T**.

By clicking a selection menu opens.

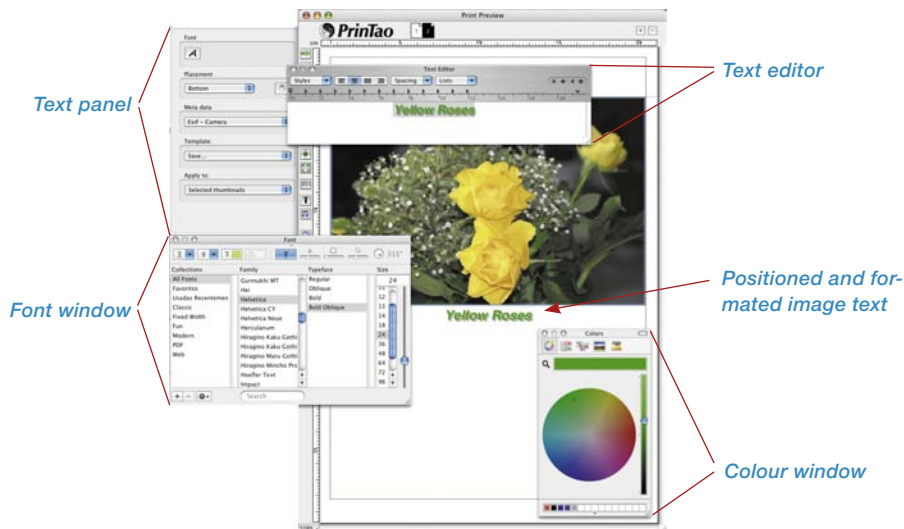
Here one can specify any picture text

Define image text
Create a new box for free movable text
Add copyright notice

- which will be shown outward at an edge of the picture,
- to provide a freely positionable text field for layout purposes,
- to add copyright notes as text within the picture.

The text dialogues can be opened directly, by double-clicking upon a placed image or an existing text box.

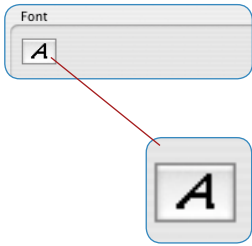
In combination with the free placing and scaling of the pictures on the print pages one has a functionality, which is attainable otherwise only in layout programs.



The text box will be closed by deselecting the edited image (deselect by clicking next to the image).

The three points in detail:

Define image text
 Create a new box for free movable text
 Add copyright notice



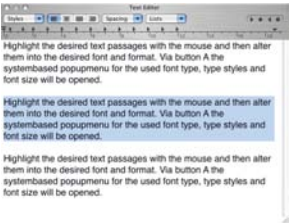
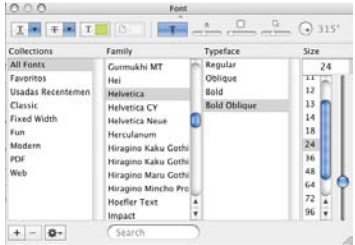
1. Define Image Text

This very substantial dialogue will enable you to create print page documents with individual as well as automated text. The settings are valid for the text as a whole as well as all the meta data visible in the text box.

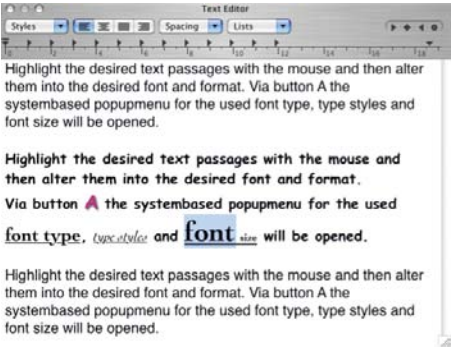
- **Text editor window:** free text can be entered here and it will show the commands of the placed meta data. Meta data can be separated via punctuation marks. The “enter” key will create a line break. Furthermore any type of external text from the system’s clipboard can be pasted here. By means of the mouse, marked textures may be formatted individually.

- **Font:** All the system fonts may be viewed here. (This function is available under Mac OS 10.3.1 or higher). Highlight the desired text passages with the mouse and then alter them into the desired font and format.

Via button **A** the system based popup menu for the used font type, type styles and font size will be opened. Alternatively, the menu may also be opened by means of the shortcut “Cmd +T”.



Unformatted text with selected text passage



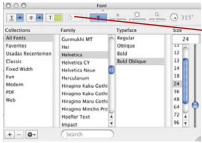
Formatted text



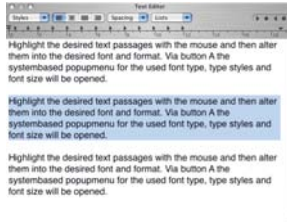
Undo / Redo

There is an unlimited “Undo / Redo” within the text editor:

- Command + Z Undo
- Command + R Redo

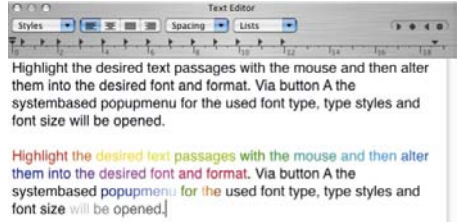


From within the fonts-palette, the colour of the text may also be changed. The button for the colours opens the system owned dialogue for choosing the text colour. The highlighted text is changed into another colour by drag-clicking onto it.

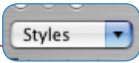
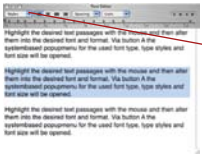


Unformatted text with selected text passage

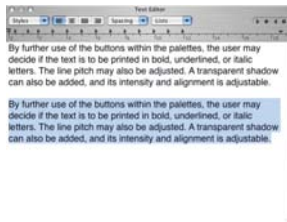
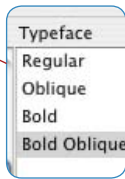
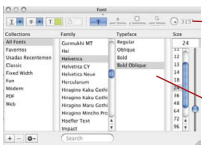
Formatted text



Formatted text

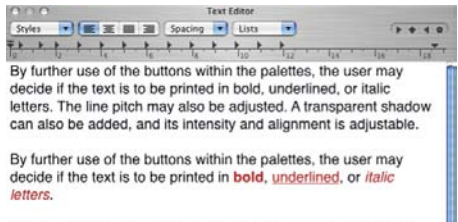


By further use of the buttons within the palettes, the user may decide if the text is to be printed in bold, underlined, or italic letters. The line pitch may also be adjusted. A transparent shadow can also be added, and its intensity and alignment is adjustable.

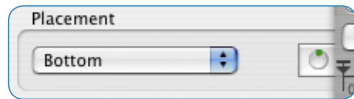


Unformatted text with selected text passage

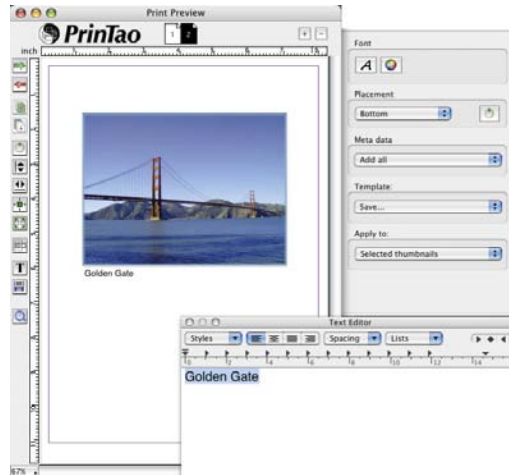
Formatted text



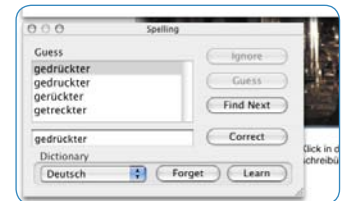
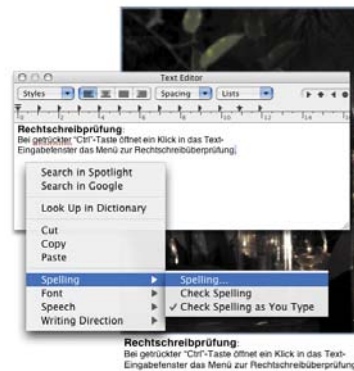
Formatted text

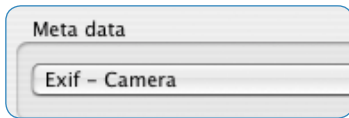


- Placement:** This popup menu addresses the placement of the text at the edges of the image. Via the button on the right hand side the text can be rotated perpendicular clockwise with each mouse click. Holding down the shift key will rotate anticlockwise.

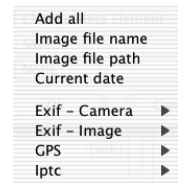


- Spelling check:** By pressing the “Ctrl” key and clicking into the text window, a sub-menu for spelling and grammar may be activated.





- **Meta data:** A very extensive menu with several sub-menus for the designation of the meta data that is to be entered into the image texts opens here. Each choice of a meta date adds this to the current position of the text cursor.

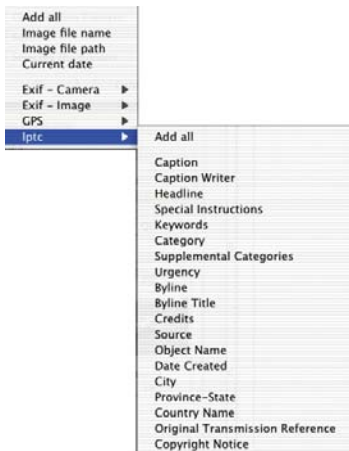
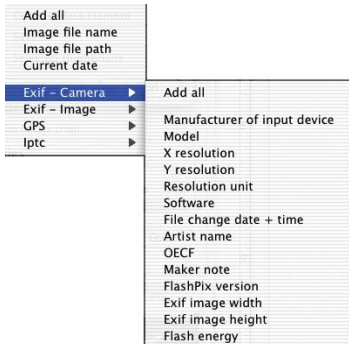


The meta data commands in sharp brackets within the text field will only lead to an actual printing of the data if the meta data entries are available in the image data. Thus, a meta data entry does not automatically lead to a printed text on the image. An “empty“ meta date will simply be ignored in the printout.

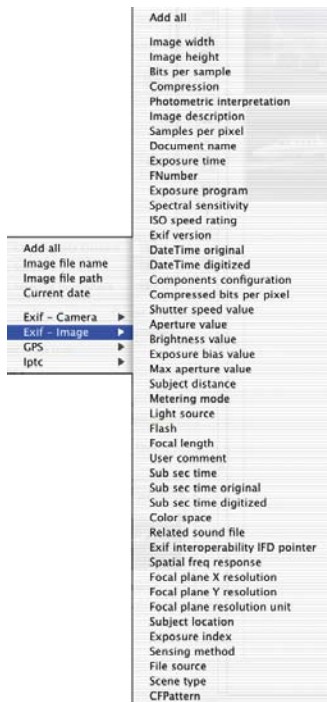
«**Insert all**» will cause all available meta data to be entered into the image text - this can easily become a very large text!

«**Current date**» enters the current system date into the image text.

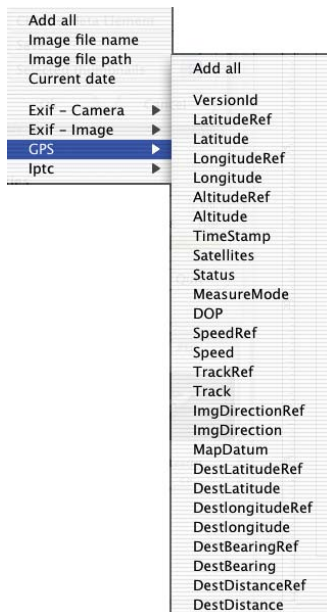
«**EXIF - camera**» is a menu for camera specific meta data.



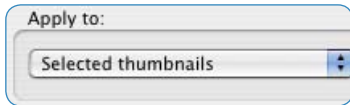
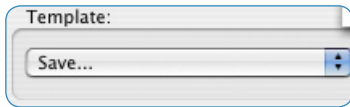
«**IPTC**» allows the embedding of IPTC meta data into the image text.



«EXIF - image» displays a large menu for capture- and image specific meta data.

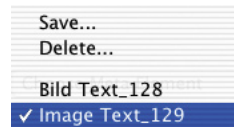


«GPS» lists the meta data of satellite supported positioning which is integrated in some cameras.



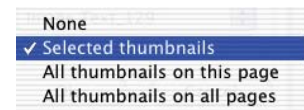
- **Templates:** here, all entered settings can be saved as a set and reloaded at a later time.

Saved sets can also be reloaded by entering their respective names.



- **Apply to:** In this menu the user can choose which images are to be furnished with text.

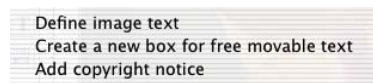
The text printing can be deactivated (*No image*), applied only to selected images (*Chosen image*), or for all images (*All images on this page*), or even assigned to all to all print pages (*All images on all pages*).



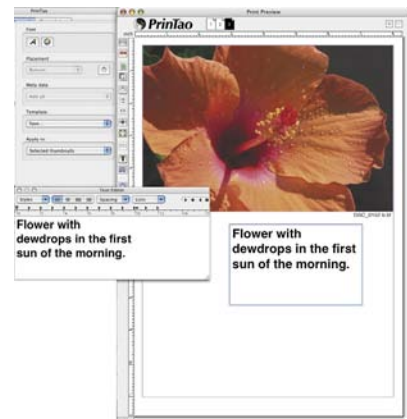
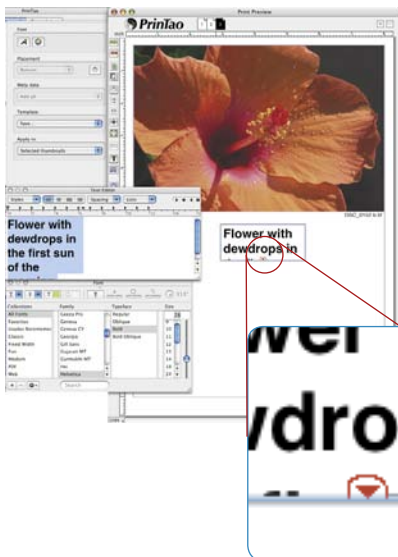
2. Create Freely Positionable Text Framework



After choosing this option a text editing dialogue will be opened and the mouse pointer will change its status to a small cross. Click and draw a rectangle on the printing area in which you wish to position the text. The size and position of the rectangle can be corrected at any time afterwards.



If the text is too long for the according rectangle, a red sign for text overflow will be shown at the bottom. Just increase the size of the rectangle as shown in the example or adjust the font parameters to smaller values.

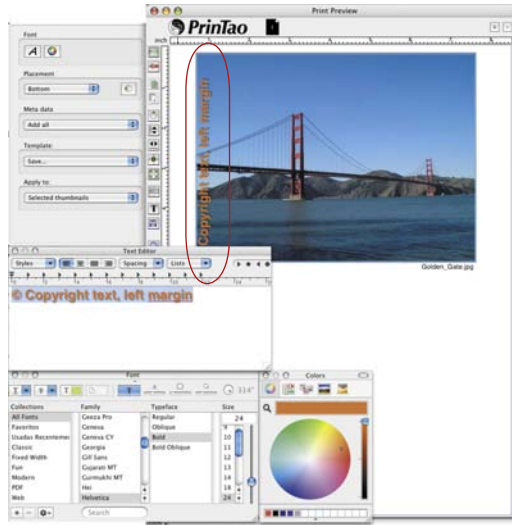




3. Place Copyright Notes Within the Image

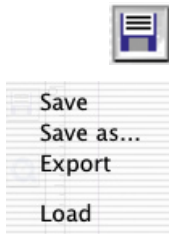
After choosing this option a text dialogue will be opened. A copyright note can be entered now, which will then become visible as a new image text within the image. The text can be placed at any corner of the image.

- Define image text
- Create a new box for free movable text
- Add copyright notice



In our example we have placed a short text left hand within the image.

For changing the copyright note at any time afterwards the dialogue can simply be opened again by choosing the entry in the text menu.



Export Print Documents as XML Files

Print page layouts can be saved from within *PrinTao* for a repeated application. By the “Save as” function, existing and modified templates may be saved under a new name.

Files are saved in XML format, containing all frame parameters and text, but no image data.

When exporting print page layouts they are saved in XML formatted files as well including the images used on the page. The image data will be named «PictureExport_00000000.JPG, PictureExport_00000001.JPG, ...». It is advisable to create a new destination folder for each Export.

Via *loading* both the saved and the exported print page layouts can be reloaded into the *PrinTao*.

Templates in PrinTao

Under the second tab in the *PrinTao* dialogue the user can find a number of predefined templates in order to place numerous images in certain adjustments or alignments on numerous pages very quick and very easy. As a matter of course one can create their own templates.

This is where *PrinTao* creates many opportunities for creativity. Any image can be placed anywhere on the print page document.



All parameters for the modification of templates as well as creating your own templates can be applied in the lower area.

New Template from Page

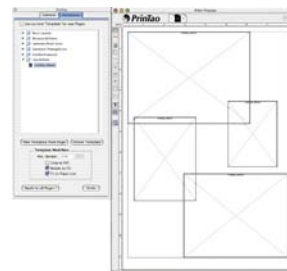
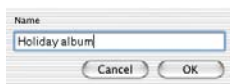
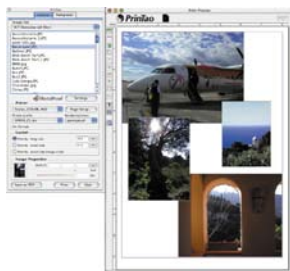
- **New Template from Page**

This is for creating image frame templates in three easy steps.

1. Create your own print page document. Include image frames according the desired layout, crop or place randomly. Then switch to the *Templates* tab.

2. By clicking the button for *New template from page* a small save dialogue will pop open for naming and saving the new template. Enter a name. By clicking *Ok* the template will be included under the list of *user defined templates*.

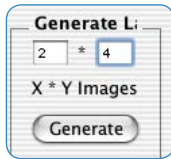
3. Open a new print page document and activate your own template by clicking the new entry under the template list. The placed frames will appear instantly in the chosen sizes.





- **Delete Template**

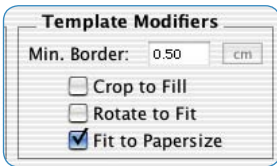
Will delete the selected template from the list.



- **Create Layouts**

The number of images per template can be entered here.

The *x-value* sets the number of columns, the *Y-value* will set the number of rows. In Example: X3 x Y5 means: 5 image rows with 3 frames each will be created on the template page. Therefore it adds up to 15 frames overall.



- **Adapt Template**

These are general parameters, valid for all images within an activated template of the present print page document.

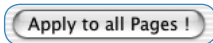
Minimum border: specifies the minimum distance of the picture frames among themselves.

Crop to fill: images will get cropped to the proportions of the present image frames. Example: A square frame is supposed to contain a rectangle image. This will result in a square clipping from the centre part of the rectangle image. The top and bottom edge of the image remain obtained, just the left and right edges will get cropped.

When pressing the *Shift* key the visible clipping of the image can be moved inside the image frame.

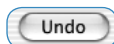
Rotate to fit: Images in portrait format will automatically get rotated in order to fit right into the landscape oriented image frame. The same is valid for landscape formatted images and portrait formatted image frames.

Fit to paper size: Will fit the chosen template to the adjusted printer paper size.



- **Apply to All Pages**

Will apply the present template to all selected print page documents.



- **Undo**

Will undo the last performed adjustment or setting

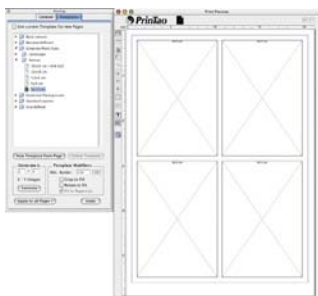
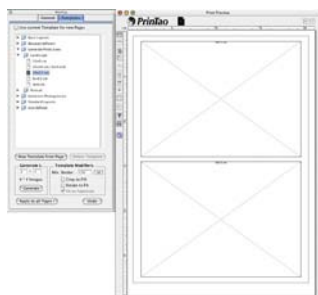
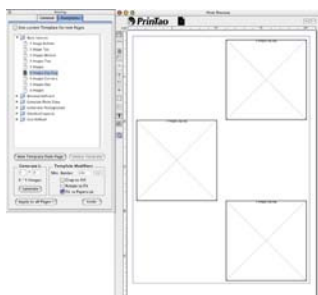
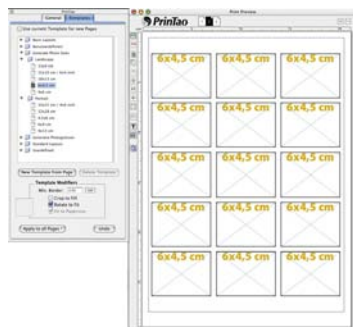
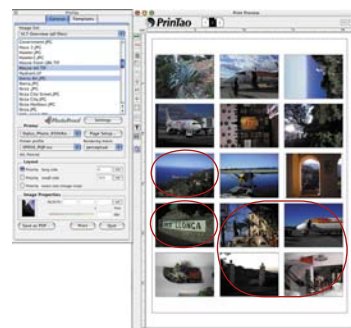
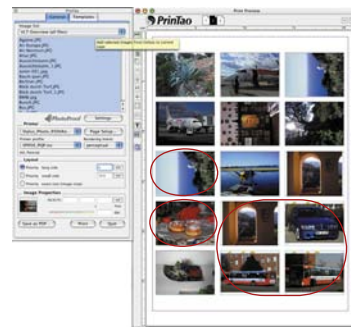
Application of Default Templates

- Switch from the *General* tab to the *Template* tab
- Choose an adequate template. When choosing the template the according empty image frames will appear on the print page.
- Switch back to the *General* tab
- Choose the images to be printed
- Enter the images to the template image frames via the green *add* arrow.

Alternatively the images can be placed on the print page document by drag&drop. The according image frame can be chosen individually by dragging & dropping a single image.

- The subsequent exchange of single images is easy (see red circles):

Activate the image to be exchanged by single-clicking on it, remove the contained image from the print page by clicking the red *remove* arrow, choose a new image from the list and enter it.



Delete Image Frame

Every selected image frame, no matter whether an image has been entered or still empty can be removed from the print page document by pressing *Shift + backspace*, or by clicking the red *remove* arrow.

Arranging Image and Template Frames via Keyboard Shortcuts

Image and template frames can be arranged incrementally by using the cursor (arrow) keys:

- *Command + cursor*: adjustment by 1 pixel
- *Command + Shift + cursor*: adjustment by 10 pixel
- *Command + Alt + cursor*: adjustment to the next guide line accordingly to the end of the print page document

Activate / Deactivate Templates

The templates can be activated / deactivated via a command of the context menu (right mouse click). The function key *F7* can alternatively be used for activating / deactivating of templates. The *magnetic behaviour* is not available when templates are not activated, because the guide lines are deactivated with the same command.

Zoom and Scaling Functionality

Printao features many possibilities to change the displayed size of the print page document or to scale the image embedded and for zooming.

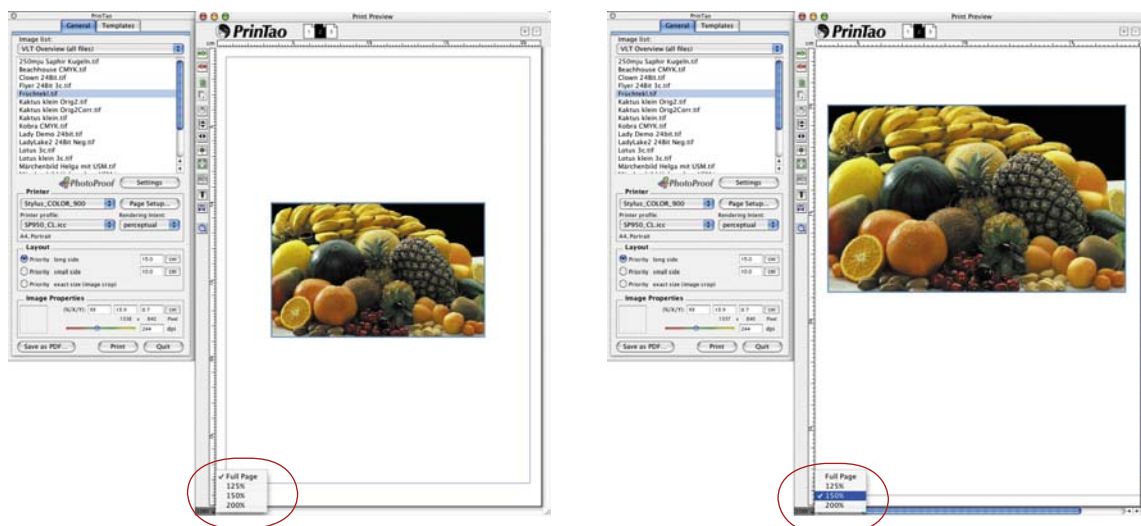
Zoom Print Page Document

For precise work in details it is eventually necessary to display the print page enlarged. There are two kind of ways to zoom the print page:

- **Print Page Zoom via Inputbox**

In the lower left corner is a inputbox displaying the actual size of the window, which works like a popup menu.

Different zoom steps can be chosen. The collateral scroll bars can be used for navigating inside the enlarged print page.

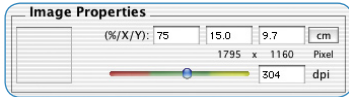


- **Print Page Zoom via Keybord Shortcuts**

Zooming can be done in 10% steps by using the keyboard shortcuts. All images need to be deselected prior to the zooming.

Command + plus: enlargement by +10%

Command + minus: reduction by -10%.



Scaling Images on a Print Page

Every single image of a print page can be scaled as a whole, thus including its frame. The input box *Image settings* displays the scaling value in percentage, as well as the X/Y size of the image.

- **Slider**

The coloured slider can change the size of an image infinitely variable by dragging the handle.



Caution is necessary if the slider is moved into the red range. The resolution of the image does not suffice for a high fidelity print.

- **Keyboard shortcuts**

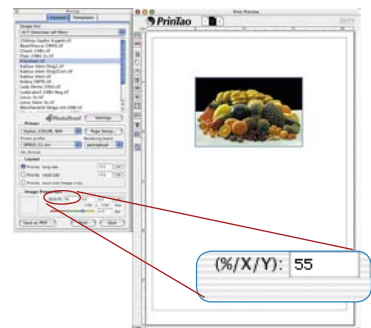
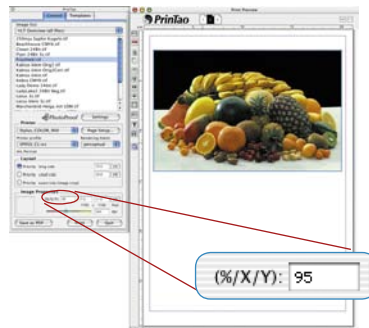
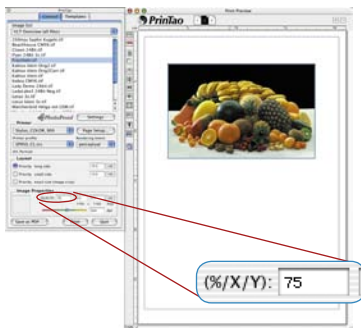
Image frames can be scaled step by step by keyboard shortcuts:

Command + plus: will enlarge the whole image frame by +10%,

Command + minus: will decrease the whole image frame by -10%.

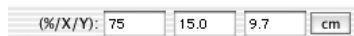
Command + Shift + plus: will enlarge the whole image frame by +1%,

Command + Shift + minus: will decrease the whole image frame by -1%.



- **Clicking and dragging**

Clicking and dragging the edge or a corner of an image frame with the mouse will also scale the image infinitely variable



- **Input Box**

Scaling values can be entered directly in the according input boxes.

Scaling Images Within the Image Frame

There is a way to scale an image within it's frame. The size of the image frame will remain the same and does not change.

- **Keyboard shortcut**

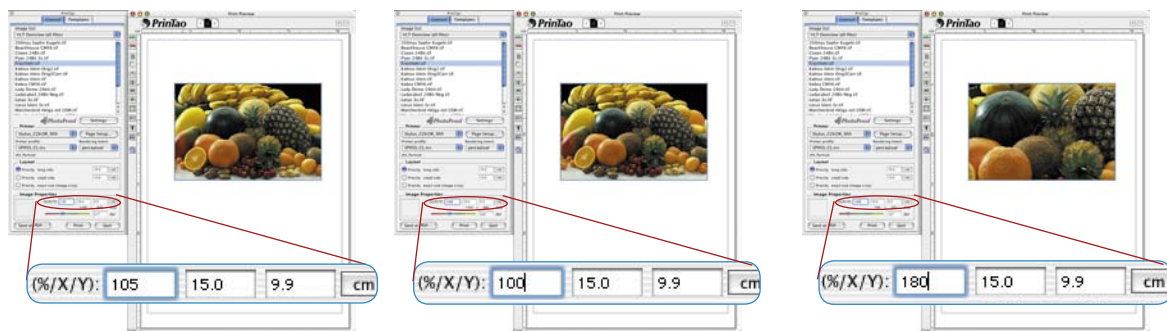
Images can be scaled within it's frame step by step via keyboard:

Command + Alt + plus: enlarge image clipping by +10%,

Command + Alt + minus: decrease the image clipping by -10%,

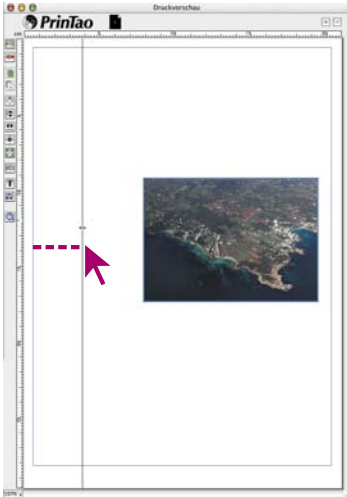
Command + Alt + Shift + plus: enlarge image clipping by +1%,

Command + Alt + Shift + minus: decrease image clipping by -1%



Help Lines and Grid Frames on Print Pages

Similar to a layout-software, *PrinTao* can set Help lines and grid frame for exact positioning of image- and text frames. The simple and structured assembly can be simplified and speed up with the *magnetic behaviour* of the guide lines.

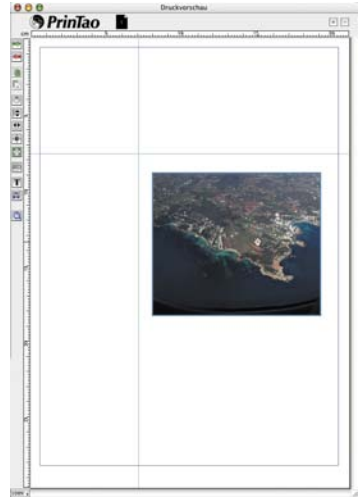


- **Creating Guide Lines**

Guide lines are created by simply clicking and dragging on either the horizontal or the vertical ruler.

- **Scrolling Guide Lines via Mouse Click**

The guide lines can be scrolled on the print page by using the mouse. The mouse pointer will change accordingly, if the mouse is parked above a guide line.

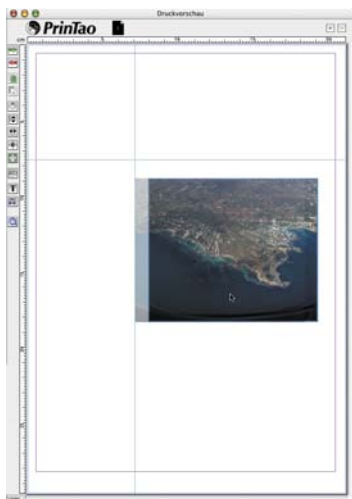


- **Delete Guide Lines**

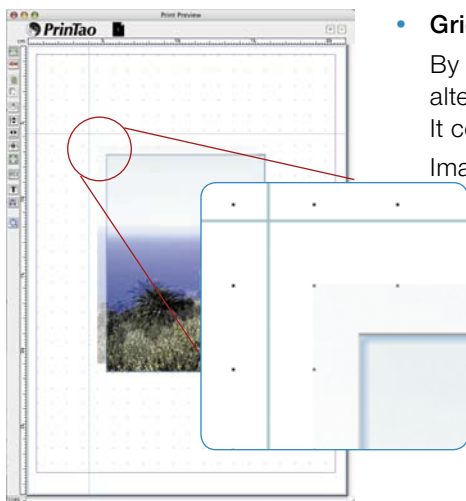
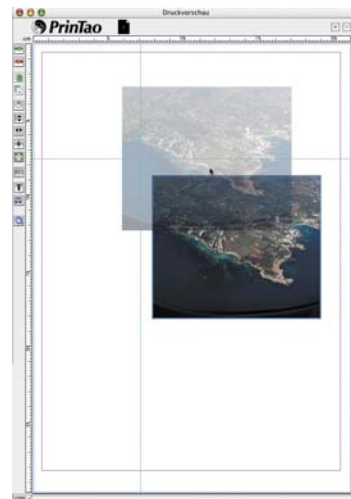
The guide line simply needs to be dragged outside of the print page document in order to delete. Alternatively a command from the context menu (right mouse click) will do the same job.

- **Show / Hide Guide Lines**

Via a command from the *context menu* (right mouse click) the guide lines will be shown or hidden. Alternatively the state of the guidelines can be toggled via *F7*. The guide lines lose their *magnetic behaviour* if not shown on the print page.



- **Magnetic Guide Lines**
If the edge or center of an image approaches a guide line, the image will be protracted to the guide line and engage there.



- **Grid Frame**
By means of the context menu (Win: right mouse button) or, alternatively by the F7 Key, a fixed grid frame will be displayed. It consists of fine points and fills the entire print page. Images may be aligned by means of their magnetic left upper corner to these points.
By means of a double-click on the horizontal or vertical ruler, the settings for the grid may be altered. The grid distance is freely choosable.

- **Moving Images by means of Keyboard Shortcuts**
Cmd + Alt + Arrow moves the image to the next help line, the margin or the next grid line, depending on which is closest.

Creative Techniques: Composing Images and Texts

The simplest case is a basic superimposition of a couple of images to a collage i.e. one large scale image in the background and a couple of small scale image on top.



Right: the final result in the print



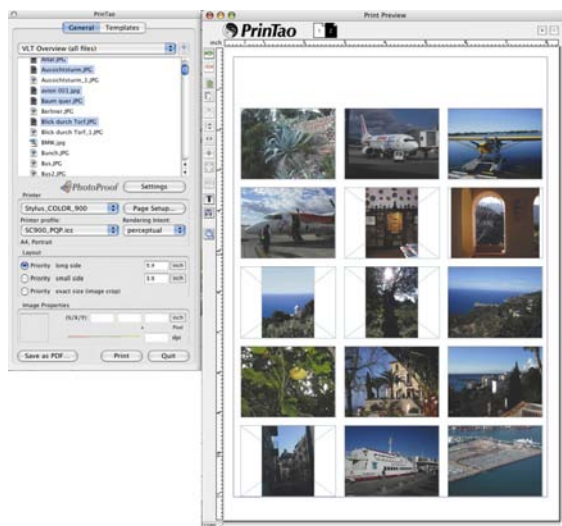
Every collage can be added with any text passages. An example of a small holiday brochure is displayed here.

More complex compositions can easily and widely be accomplished via the templates automatically.

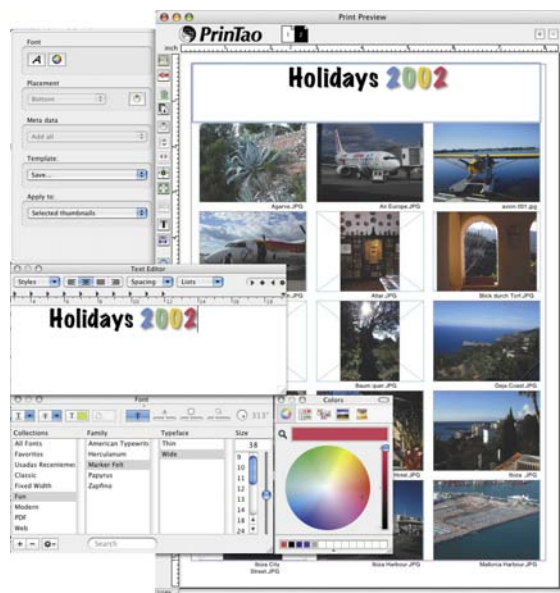
- At first choose a template.
- Select images to be entered into the image frames.
- Add image subtitles automatically with the text tool.
- Enter a title for the print page document.
- Possibly interchange individual images later.
- ...



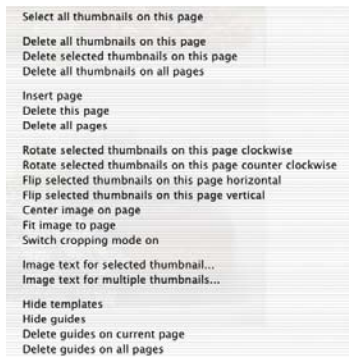
Print page document with empty frames and no text



Print page document with images.



Print page document with images and text and a free movable text title.



Context Menu (right mouse click) upon a Print Page Document

The substantial context menu features another simplification and assistance assembling layouts and print pages.

Changing the structure of a page quick and easy, deleting images, mirroring and rotating, adding or deleting pages, ... almost all button functionality left of the print page window can be accessed via the context menu.

Printer Setup

The parameters of the connected printer can be defined in the menu "Printer".

In case a printer profile is available, the according profile can be chosen under "printer profile" for the appropriate printer/paper setup. This even permits working with calibrated printers. Please read the according chapter "*SilverFastPhotoProof*".

NOTE: Please note that the following menus for setting up the printer vary substantially, depending on the operating system and the different printer models.



*Attention!

SilverFastPhotoProof is only available as an option in *SilverFastDCProStudio* and *SilverFastHDRStudio*.



Please note for *SilverFastPhotoProof*!

In order to verify that your desired results will be colour consistent and legally binding please follow these requirements:

- Switch off colour management in your proof printer driver
- Your proof printer has to be calibrated to the necessary ink and paper combination. The corresponding printer profile must be chosen accordingly in the *PrinTao* dialogue.
- The papers used for creating the proofs need to meet the settings in the printer driver as well as the specifications in the chosen Output profile.

Keyboard Shortcuts in *PrinTao*

Action	Macintosh	Windows
Activating /deactivating templates and Activating /deactivating guide lines and activate/de-activate grid frame	F7	F7
Delete image frame from print page.	Shift + backspace	Delete
Rotate image with template frame	Alt+click. on rotate button	Alt+click on rotate button
Rotate image counter-clockwise.	Shift+click on rotate button	Shift+click on rotate button

Cropping Mode Not Active

Crop image.	Alt + click-dragging edge or corner	Alt + click-dragging edge or corner
Crop image symmetrically	Alt + Shift + click-dragging edge or corner	Alt + Shift + click-dragging edge or corner
Scroll image clipping within image frame	Shift + click-dragging within image	Shift + click-dragging within image
Scale image proportionally.	Shift + click-dragging edge or corner	Shift + click-dragging edge or corner

Moving Image- and Template Frames via Keyboard Shortcuts

Adjustment by 1 pixel.	Command + cursor.	Ctrl + cursor
Adjustment by 10 pixel.	Command + Shift + cursor.	Ctrl + Shift + cursor
Adjustment to the next guide line or rather edge of printable area	Command + Alt + cursor	Ctrl + Alt + cursor

Action

Macintosh

Windows

Zooming the Print Page via Keyboard Shortcuts

Enlargement by +10%	Command + plus	Ctrl + plus
Decrease by -10%	Command + minus	Ctrl + minus

Scaling Image Frames Stepwise in Percentage

Enlarge image frame by +10%	Command + plus	Ctrl + plus
Decrease image frame by -10%	Command + minus	Ctrl + minus
Enlarge image frame by +1%	Command + Shift + plus	Ctrl + plus
Decrease image frame by -1%	Command + Shift + minus	Ctrl + minus

Scaling Images Inside it's Frame

Enlarge image clipping +10%	Command + Alt + plus	Ctrl + Alt + plus
Decrease image clipping -10%	Command + Alt + minus	Ctrl + Alt + minus
Enlarge image clipping +1%	Command + Alt + Shift + plus	Ctrl + Alt + Shift + plus
Decrease image clipping -1%	Command + Alt + Shift + minus	Ctrl + Alt + Shift + minus

Text Functions

Open text menu	Command + T	not available
Select complete text of text box	Command + A	not available
Print selected text bold	Command + B	not available
Print selected text <i>italic</i>	Command + I	not available
<u>Underline</u> selected text	Command + U	not available
Launch spelling check	Ctrl + click	not available
(menu)	into the input field	
Undo	Command + Z	not available
Redo	Command + R	not available

Action

Macintosh

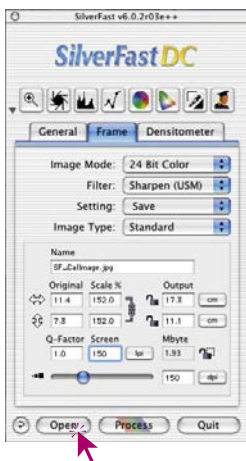
Windows

Navigator / File Browser

Navigation within image list	Arrow up / down	Arrow up / down
Extend selection	keep Shift pressed.	keep Shift pressed
Add selected images to printing page . .	Alt + arrow right	Alt + arrow right
Add selected images to printing page . .	Alt + Enter	Alt + Enter
Open directory.	Arrow right	Arrow right
Back to superordinated directory. (if a directory is selected)	Arrow left.	Arrow left
Back to superordinated directory. (if files are selected only)	Alt + arrow up.	Alt + arrow up
Close directory. (if <i>file browser</i> is selected)	Arrow left.	Arrow left
Define selected directory as Root	Alt + Enter	Alt + Enter
(if a directory is selected)		

Opening an Image with the “Open” Button

Clicking on the “open” button activates a dialogue used for selecting the device or folder containing the images:



Open an image directly by double clicking on the name or by single clicking on the name and clicking the “open” button. The image will be opened within the *SilverFast* prescan window.

Macintosh

Clicking on the header of the prescan window, while keeping the “Command”- key pressed.

Windows

Right click the mouse in the prescan window.

6.16 PrinTao



Extended Print Dialogue of *SilverFastAiStudio*

In the standard versions of *SilverFastAi*, the “Print” button merely opens a simple printing dialogue. Only single scan frames may be printed out. The *Studio versions* use this button to open *PrinTao*, the extended print dialogue.

Contents of the Extended Print Dialogue *PrinTao*

Page ;umber
Page breaker

Page
Add or delete

Image List
Choosing scan frames in the preview window.

Printer Settings and Choice of ICC Printer Profile

Page and Layout Settings
Presets which size of the image should be considered in the print., and 1:1 copy function.

Thumbnail of chosen Image in the Image List

Start Printout

Print Resolution of Active Image in the Print Dialogue

Close Dialogue

Tools

- Add
- Delete
- Rotate
- Reflect vertically
- Reflect horizontally
- Centre
- Adjust
- Cut
- Image text

Rulers
Measurement unit: cm

Window of Printed Page

Printing Area
Marked by violet frame

Differences in the Print Dialogue in *SilverFastStudio* Versions as Compared to *DC-* and *HDR-* Versions

The basic functions are almost identical to extended print dialogue of the *VLT* (ref. *SilverFastDC...*, *HDR...*) of the *PrinTao* versions.

A more detailed description can be found in the respective sections of Chapter 6.11.

Some “logical” differences are derived from the nature *SilverFastAi* as scanning software – it cannot handle previously saved image files. Hence several functions of the *Ai* versions such as templates, meta-data, etc. are unavailable.

The main difference, however, is the “1:1 copy function” which simulates the usage of a photocopier.

- **1:1 copy function**

When switching from the scan dialogue to the *PrinTao* dialogue, all frames drawn within the preview window, including their exact positions and proportions are transferred 1:1 to the selected paper format.

The individually set frame parameters (e.g. filters) are also transferred.

The new qualities will help users that, for example, have to scan newspapers for archiving purposes regularly. It is now easy to de-screen images of newspapers while merely sharpening the textures. Care should be taken with selecting the batch order in the *PrinTao* dialogue. The batch order depends on the order in which the scan frames have been drawn or modified. It is, however, still easy to select the correct order of the batch scans by means of the two batch buttons in *PrinTao* dialogue.

An example of the workflow of an old brochure:

Preview Scan

In our example, 9 scan frames were drawn: One for textures (green frame) and eight for the images (red frames). The scan frame for the eight images all have identical parameters and were duplicated and positioned immediately after the first frame has been set.



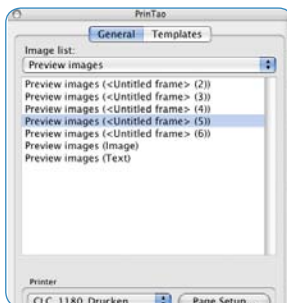
PrintTao

Switching into the PrintTao dialog activates the 1:1 copy function. All scan frames are automatically transferred to the print page.



Batch Order

If necessary, a different scanning order may be allocated to all images on the print page. To do this, click the scan frame and may be re-allocated forward or backward by use of the two batch buttons.



Text Function

For archiving purposes, a small text block is positioned on the page..

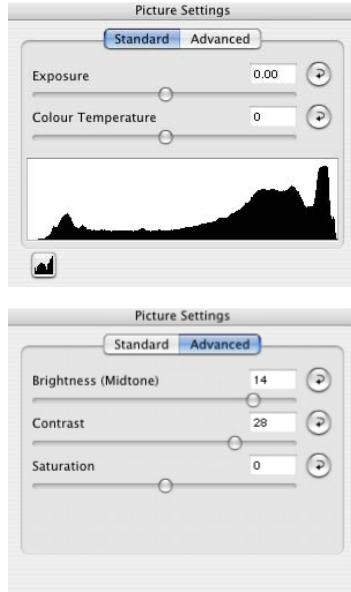


Result

The final result of the 1:1 copy function. The textures are clear and sharp and the images are descreened.



“Image settings” in *SilverFastAiStudio*



The dialogue window “Image settings” (known from the *SilverFastDC...*- and *-HDR...* versions) has now been modified and implemented into *SilverFastAiStudio*. A real-time output histogram that shows the effects of all *SilverFast* settings on the final scan is shown.

The difference to a normal histogram is that this feature shows the target- or final histogram. This is the actual histogram that is also shown after the scan has been done. All parameters that have been set in *SilverFast* are hence shown here. A normal histogram that shows the source or input histogram which shows the image before scanning. By pressing the “Alt” key in the normal histogram, the display will show the target histogram.

