

Dealer Information Package

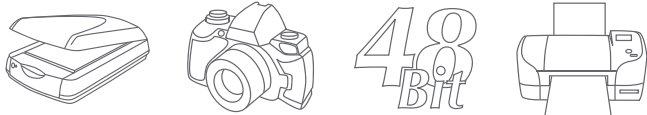
„Der SPIEGEL“, Europe’s leading news magazine located in Hamburg uses the combination of SilverFast Ai Studio and SilverFast HDR Studio to drive its High End scanners, Heidelberg Nexscan.

„SilverFast allows us to finally use the latest Macs with Intel Processors“

Reinhard Wilms, editorial technician at „Der SPIEGEL“

Contents

History of LaserSoft Imaging® AG	4-5
Highlights	6
Photoshop	7
Product overview	8-9
1. SilverFast® SE and Ai: for professional scanning	10-11
2. SilverFast DC®: RAW conversion, individually adapted for D-SLRs	12-13
3. SilverFast HDR®: processing of 48Bit images	14-15
4. SilverFast PrinTao®: generate layouts and use ready-made image templates	16
5. SilverFast® Archive Suite: efficient processing of all images	17
IT8 Targets for Color Calibration	18-19
SilverFast® Multi-DVD, price list	20
SilverFast® Order and Licensing System (OLS)	21



Dear Dealer, dear Distributor,

We proudly present our new dealer information package. The following pages contain all relevant information that you as a SilverFast dealer or distributor might require. We hope you enjoy this brochure - but most of all, that it may help you to successfully sell SilverFast.

This is what we offer:

- High profit margins
- Self determined profit
- National and international support
- Comfortable ordering by combining our Online Licensing System (OLS) and „SilverFast Multi-DVD“
- Generation of lucrative follow-up business e.g. hardware bundles
- Our reputation is your benefit: your customers' trust with a strong partner.

We look forward to a constructive and trustful cooperation and hope that this brochure will help to maximize your profits and serve many happy customers.

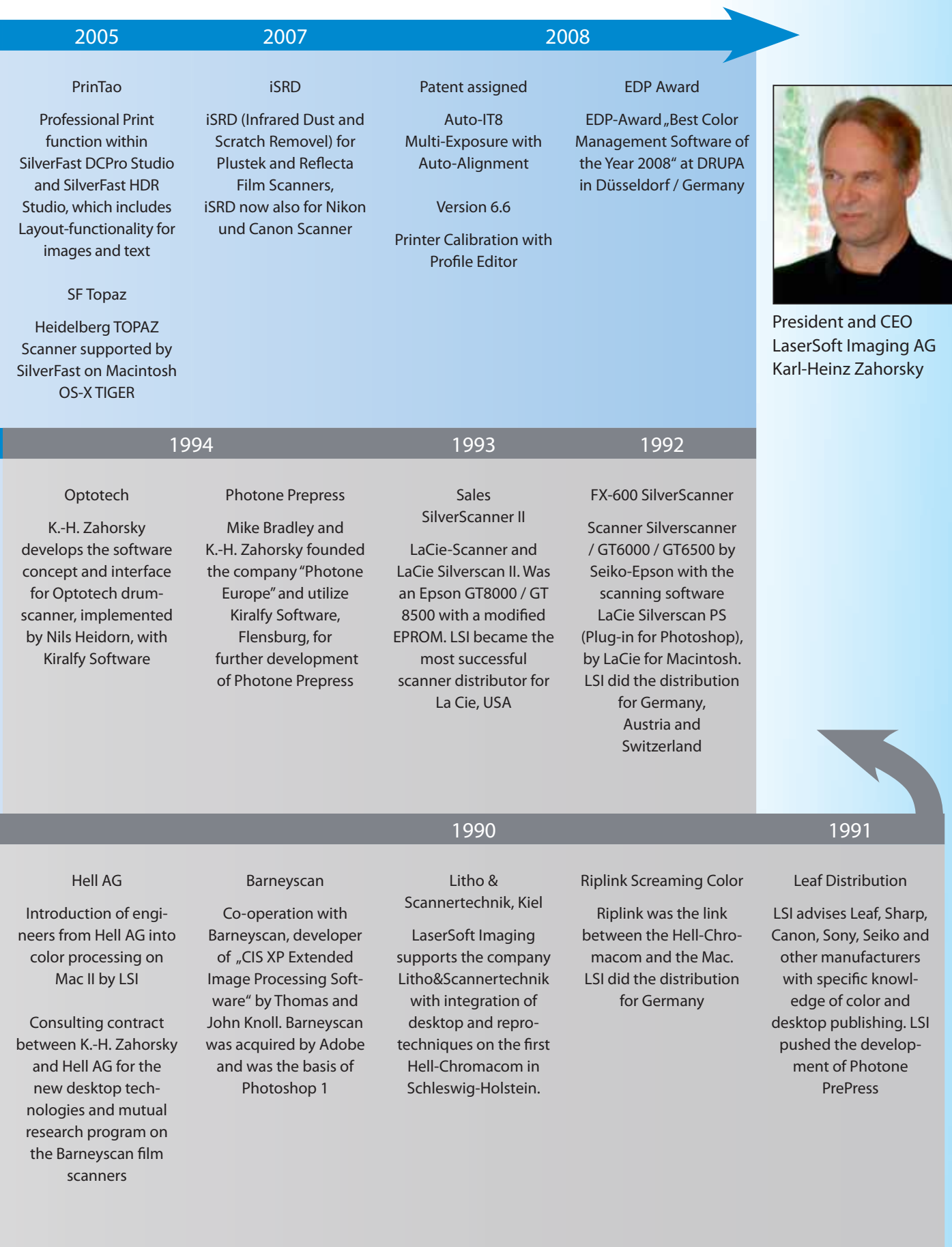
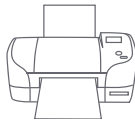
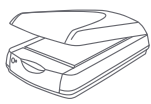
Kind regards
Your SilverFast Team

Company Portrait

Founded in 1986, LaserSoft Imaging AG is known as an imaging pioneer who not only developed the award-winning software SilverFast®, but also developed many technical innovations - such as SilverFast Multi-Exposure®, which enables a film scanner to achieve the results of much more expensive drum scanners.

LSI History of Digital Imaging

2000		2001		2002
SilverFast Ai 5.0 Version 5.0, Launch at CeBit in Hannover / Germany Multi-Sampling, Multiple densitometer points, real-time correction, permanent Softproof, masks in SCC		SilverFast NegaFix Version 5.5 Introduction of NegaFix, more than 120 Film presets JobManager, HiRePP		SilverFast 6.0 Version 6.0 Improved IT8 Calibration with Target detection SRD, SC2G, ACR, GANE II, MidPip4 Introduction of SF_App (Stand-Alone -Version of SilverFast)
SilverFast SE Launch of SilverFast SE				SilverFast DCPro Launch of Version 6.2, at the Hannover CeBit in Germany. New SilverFast Ai Studio and SE Plus, AACO (Auto Adaptive Contrast Optimization) September 2004: „SilverFast – The official Guide“ (Dr. Taz Tally) now available in German and English
1998		1997		1995
SilverFast Ai 4.0 CeBit, Hannover - ScanPilot , resizable interface, IT8 calibration, selective correction of 12 colors (SCC with CM12) Prescan now rotatable. SilverFast 4.0, ColorSync 2.5 and Adobe Photoshop 5.02 over 70 scanners now supported.		SilverFast Ai 3.0 Hannover CeBit, - HDR Version, Plug&Play-CMYK incl. Softproof-Preview PrePress Color Tools, 2-Level User Interface: Normal – and Expert-Dialog - a new concept in the market		SilverFast 1.0 Hannover CeBit , Cooperation with Epson Germany. LSI is the most successful Epson scanner reseller in Germany SilverScanner III The GT9000 is the first scanner to be shipped with SilverFast.
SilverFast HDR 1997 supports Photo-CD and processes 16 bit RAW data from scanners and digital cameras: SF PhotoCD, SF DC, SF HDR				SilverFast concept K.-H. Zahorsky developed the SilverFast concept and employed developers to create SilverFast scanning software
1986		1988	1987/90	
Founding of the Company LaserSoft Imaging was founded by physicist and visionary Karl-Heinz Zahorsky		MacUp Magazine First article about digital imaging by K.-H. Zahorsky (using the Linotype 100 of RELOG, Kiel) for reproduction of the first grayscale images published in MacUp magazine	Macintosh II Start of computerized color processing with video digitizer ProViz of Pixelogic, USA. LSI was the European promotor and sales channel. Color images were captured by ProViz and send via SCSI-port to Mac II	
			MacWorld, Sweden First European MacWorld, Stockholm, Sweden. First lecture about Image Processing by K.-H. Zahorsky Canon, Still-Video. LSI consulted Canon and promoted Canon Still-Video Camera RC760S, the predecessor of digital photo cameras	Truvel's TrueScan TZ-3 BW C scanner with zoom lens and 900ppi. zoom-lens and 900ppi. Presentation of first professional color scanner for Macintosh, Hannover CeBit 1989, by Apple Computer Deutschland and LSI. First public demonstration of color scanning and displaying scans on a 13 inch, 24 bit Apple RGB monitor



President and CEO
LaserSoft Imaging AG
Karl-Heinz Zahorsky

SilverFast® Highlights



Auto IT8 Calibration

Get consistent colors with one single mouse click IT8-Calibration.



Preview concept

Flexible zoom and preview concept with real-time preview of all SilverFast tools and operations.



Auto Adjust

One click optimization with Image Type presets



Multi-Exposure

Scanning slides Multi-Exposure improves the Dynamic Range of most scanners, reduces noise and brings up more picture details.



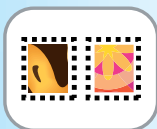
Descreening

Automatic tool for scanning of printed images to avoid Moiré effects.



NegaFix

Handles the conversion of negative film. The NegaFix Expert Mode allows to edit and generate custom negative profiles.



Auto Frame

One Click - and all images in your prescan are framed.



JobManager

Productivity tool for optimizing a batch of images efficiently.



USM

Luminance sharpening tool with preview of the final sharpening effect.



SCC

Manipulates and changes individual colors. Other colors remain unaffected.



SC2G

Allows distinguish different levels of gray when converting color images into grayscale images.



MidPip4

Helps remove up to four color casts in different neutral tones.



Kodachrome Feature

Enables color-correct scanning of Kodachrome slides.



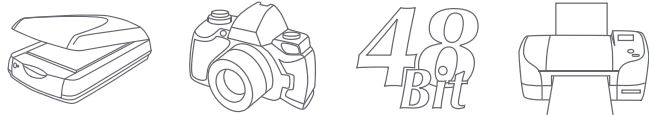
iSRD

User-controlled removal of dust and scratches with infrared channel technology.



QuickTime Movies

Movies in each dialogue show and explain each function of SilverFast.



SilverFast Advantages compared to Adobe Photoshop

The emphasis is: SilverFast is complementary to Photoshop. It is the ideal complement although looking closely at the two, we realize that 95% of all image publishing is image optimization rather than retouching work or artistic effects. This means SilverFast's functionality is applicable to 95% of all work concerning images.



1. Scan Software Concept

SilverFast controls scanners so the full dynamic range (up to 48Bit) can be used. What scanners do not see, Photoshop cannot bring it up! Gradational correction (application of gradation curves, such as brightness or contrast changes) based on 24bit always leads to loss of image details.

2. Preview Concept (High-End Concept)

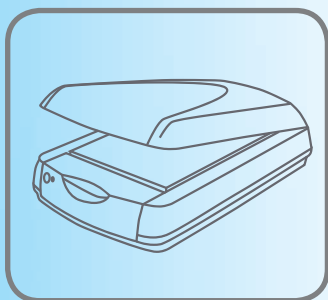
All corrections are done in real-time. There is no delay between adjustment and preview. The Job Manager executes the final processing.

3. SilverFast HDR® - for 48Bit Data

Photoshop is very slow with larger files - it also lacks an adequate automatic image adjustment for 48Bit files coming from a scanner. In Photoshop each operation processes every single pixel. The larger an image, the longer the processing time, which causes delays and waiting time. Thanks to the unique HiRePP feature, SilverFast HDR opens and handles, e.g. a 1GB file in less than a second, compared to several minutes in Photoshop.

4. SilverFast® unique Features - Advantages to Photoshop

- QuickTime Movies in each dialogue and ScanPilot help to understand and learn the best workflow for performing different functions
- NegaFix - high quality negative film conversion with 120+ different profiles
- Auto-Adjust with image type presets to adapt the automatic to different requirements
- Color-Cast-Removal-Slider
- MidPip 4 - Removal of up to four different color casts (e.g. mixed light condition)
- 3-Part Histogram - simultaneous flexible editing of highlights-midtone-shadows in all three RGB channels
- Selective Color Correction with ACR (Adaptive Color Restoration)
- SC2G - Selective Color to Gray - ideal to convert colors into grayscale (B&W)
- USM (Unsharp Masking) works in the luminance channel and not in color channels
- JobManager - easy to process lots of images with different settings, etc.



Individually hardware adapted professional scan software

„SilverFast offers an absolutely professional working platform. The selection of image types alone enables the software to obtain excellent results immediately.“

fotoDigital 5-6/2005

SilverFast® SE Plus

Entry-Level Software. SilverFast SE Plus is especially designed for those who want to enter the world of digital image processing. Images will immensely benefit from SilverFast's intelligent automatic functions which help to make the process of various adjustments much easier.

SilverFast® Ai Studio

Professional scanning software with highest quality output. SilverFast Ai Studio includes many new, innovative functions for an even higher degree of efficiency for image optimization. Multi-Sampling now includes Auto-Alignment, enabling this feature even on scanners without hardware-based support. AACO allows the user to extract maximum details from shadow areas, without compromising highlights. This has become a very important tool, especially when working with scanners that have limited Dynamic Range. These two tools combined increase the usable Dynamic Range of almost any scanner in the market today.

SilverFast® Archive Suite

LaserSoft Imaging presents a unique solution for fast and comfortable archiving of slides, negatives and reflective originals. With the new SilverFast Archive Suite you get a bundle of two programs: SilverFast Ai IT8 Studio and SilverFast HDR Studio. Since both of them are equipped with efficient functions, you will enjoy maximum processing speed as well as an efficient workflow. An integrated Color Management System meets professional standards and completes a convincing package.

SilverFast® X-Ray

SilverFast X-Ray was especially designed for the digitalization of X-Rays. Dental X-Rays, Cardiac X-Rays, Lung X-Rays, any size of X-Ray can be digitized dependent on the size of the flatbed scanner (see recommended scanner models further down). Due to the individual adaptation to the characteristics of adequate scanners, SilverFast X-Ray is able to get maximum details as well as the maximum of tonal values out of medical and scientific X-Ray. The intuitive tools allow novice users to obtain close to perfect scans.



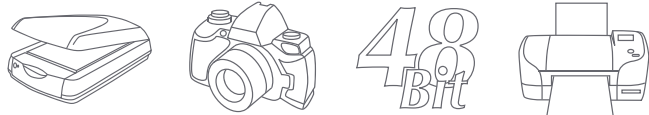
Complete stand-alone software solution for digital cameras.

„I am pleased that SilverFast DC Pro is one of the top RAW converters around. SilverFast DC Pro and the Canon EOS-1D, 10D and D60 allowed me to capture and correct all images for my book (Luxury under Sails).“

Heimo Aga, Photographer

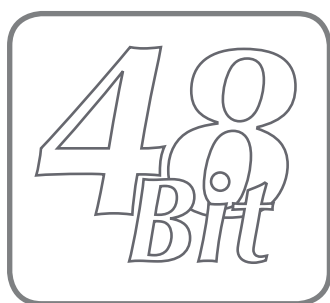
SilverFast® DC VLT

SilverFast DC VLT is great for ambitious hobby photographers and allows them to modify the original camera data. RAW images are often referred to as „Digital Negatives“ by photographers due to the maximum Dynamic Range they contain. Accessing the RAW image before conversion into formats like JPEG and TIFF allows users to adjust the color balance, saturation, smoothness and sharpness instead of being left with the camera's automatic settings.



SilverFast DC Pro®

SilverFast DCPro high-end Digital Camera Software addresses the specific needs of digital photographers. The application combines the award-winning powerful functions of SilverFast with the unique Virtual Light Table. SilverFast DCPro supports Raw Data Formats for many professional digital cameras from Canon, Minolta, Nikon, Olympus, Kodak, Fuji Samsung and Sigma. The conversion of raw data takes place as a time-saving background process and the results are stored automatically. Hence, the user can re-open converted files without losing time.



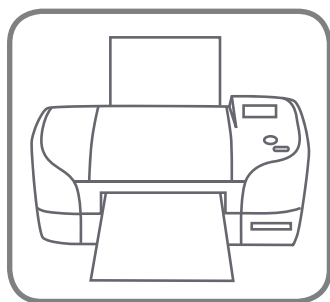
High-end version for 48Bit RAW processing

„The HDR version is ideal for users that are optimizing RAW scanner data [...] the optimization of color negatives is made very easy. Highly recommended!“

Andrew Rodney, Digital Dog

SilverFast HDR® Studio

High-end version for 48Bit RAW data processing (High Dynamic Range Imaging) with JobManager, 48Bit color-corrected output, Virtual Light Table and much more (optional IT8 Calibration). SilverFast HDR Studio version comes with all features of SilverFast HDR and SilverFast DCPro + AACO, JPEG 2000, USM Plus, Clone Tool, PrinTao and optional SilverFast PhotoProof. SilverFast HDR Software enables the user to read and process 48 bit RAW files without being connected to a scanner and has been upgraded to support camera raw data. All camera raw formats supported by SilverFast DCPro are now also available in SilverFast HDR 6.6.



Create layouts, print with ready-made image templates.

„PrinTao offers the possibility to quickly ‚Proof‘ my images. Direct printing of context sheets and the personalized layout with true color reproduction, simplifies many tasks which would normally require several different applications.“

Karsten Kettermann, Photographer

SilverFast PrinTao®

SilverFast PrinTao is a successful print software supporting templates, allowing to reduce repetitive steps in the layout process - either by predefined templates (included in SilverFast PrinTao Printer Software) or by user- customized templates. Printers, especially multifunction devices, depend significantly on a good software to utilize their full potential.

SilverFast® SEPlus Multi-Exposure

"Opportunity for very specific fine tuning: Thanks to the ScanPilot and the QuickTime movies. These movies are also very helpful for beginners. The automatic adjustments will help you to create very good results immediately."

MacUp 04/2005



SilverFast SE Plus is especially designed for those who want to enter the world of digital image processing. Images will immensely benefit from SilverFast's intelligent automatic functions which help make the process of various adjustments much easier. Predictable color from the SilverFast SE preview gives imaging and color reproduction a new dimension securing the correct workflow with the ScanPilot. SilverFast SE Plus can be used as a Stand-Alone Application or as a Plug-in for Photoshop. Integrated QuickTime movie tutorials (in each dialog) will help to quickly understand and benefit from each function. The software can be upgraded to a full version of SilverFast Ai.

SilverFast® Multi-Exposure

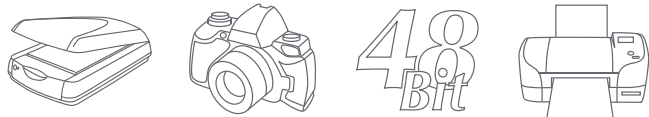
The dynamic range of each stage (capture, scanning, editing and storage) plays a crucial role in the quality of the results. In general, technologies with greater dynamic range produce better results. The objective of Multi-Exposure is to enhance the dynamic range of scans from film material since a scanner reaches its limits with its normal one-single-scan acquisition. Today's film material, whether black&white, negative color film or slides, provides a very high dynamic range, because film manufacturers have added more layers of different sensitivity. A regular positive film, more commonly called slide film, holds a contrast range of up to 8 f-stops. A well exposed and developed negative can hold up to 12 f-stops.



Without Multi-Exposure



With Multi-Exposure



SilverFast® Ai IT8 Studio Multi-Exposure

Excellent quality is very, very important to my work. The colors of my landscape photos are represented true to the original [...] The results with SilverFast are fantastic.

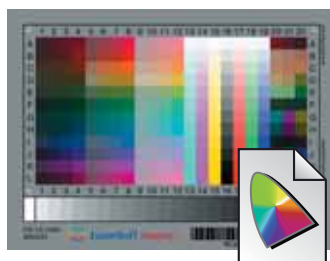
Henno Drecol, Photographer



SilverFast® is individually adapted to each supported scanner and therefore can get the very best from each scanner. The software combines a very intuitive user interface with sophisticated and professional scanner and image controls. Beginners and professionals will appreciate the unique real-time controls and the intelligent automatic functions as well as the ability to manually adjust each image at any point. The features of SilverFast Ai Studio offer an even higher degree of efficiency for image optimization. SilverFast Ai and SilverFast HDR® (optional) are working in full 48Bit mode. Both deliver uncorrected output into 48Bit HDR-format, as well as full 48Bit color-corrected output enabling the optimum quality while securing maximum dynamic range!

Auto IT8 Calibration

Color management and a correct color reproduction are challenging even for professionals since both can be difficult to handle. The latest SilverFast versions allow professionals and novices to obtain accurate colors - all complex calculations are all done by the software automatically. Just one mouse click is enough to start the fully automated calibration process, which calculates and generates an ICC-profile. Due to the genuine and patented combination of the automatic frame detection and the integrated barcode technology imprinted on SilverFast IT8 targets, the complete calibration process runs fully automatically. Just place the original LaserSoft Imaging IT8 target on the scanner and simply press the IT8 Calibration start icon.



before Auto IT8 Calibration

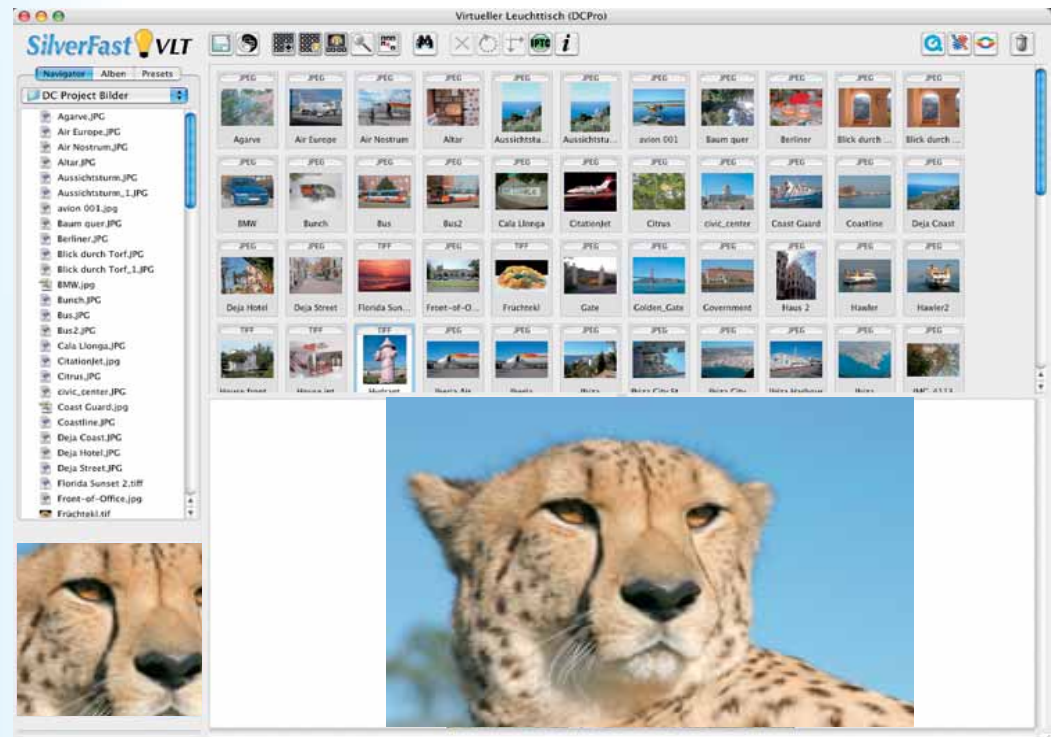


after Auto IT8 Calibration

SilverFast® DC VLT

"... [SilverFast DC] worked so well over the last few years that SilverFast DC has become my personal choice to do all of my raw file processing."

David B. Brooks, Shutterbug

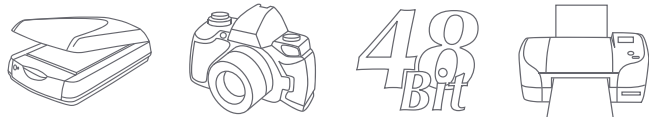


The Virtual Light Table VLT provides the photographer with the essential working space to organize, manage, and process digital images. In one place, the photographer can view all images in thumbnails, search for images, create image archives, attach comments to the images, generate a contact sheet of the complete Virtual Light Table and print single images at high resolution. For each image the photographer can also retrieve critical EXIF information from his digital image files. A special feature of the Virtual Light Table is its unique „loupe“ function. To get a complete impression of a given image, the user can increase the image size in the overview or the album window. In this mode, the mouse pointer acts as a virtual loupe and shows the desired image area at full resolution. The user can utilize this control to evaluate sharpness and details within the image. With SilverFast DCVLT users can access a complete palette of professional correction functions found in SilverFast Ai.

SilverFast Basic

SilverFast DC VLT includes the new SilverFast Basic mode. SilverFast Basic provides a simplified user interface to give beginners an easy start in SilverFast. In basic mode, users become familiar with the essential features of the imaging software while being presented only with minimum editing tools. Once a comfort level is attained, users can then switch to standard mode, where the full functionality and powerful features are available for increased productivity.





SilverFast®DCPro

„... I am pleased to see SilverFast DCPro is among the top programs for RAW conversion. With SilverFast DC Pro and the availability of the Canon EOS-1D, 10D and D60, I was able to shoot all pictures for my book on sailing cruises (Luxury under Sails) digital and, of course, all with SilverFast DCPro.“

Heimo Aga, Photographer, www.heimoaga.com

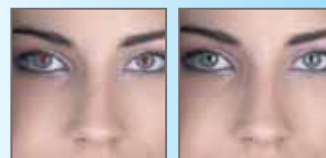


SilverFast DCPro is a high-end Digital Camera Software, that has been designed specifically for the needs of photographers. It combines the unlimited functionality of SilverFastAi with the unique Virtual Light Table. The Virtual Light Table is an efficient way for photographers to import, organize, review, edit, print and archive large numbers of digital images in a non-destructive manner. The user friendly graphic interface allows easy access and control over preset or adjustable parameters for white balance, exposure control and many more. SilverFast DCPro supports raw data formats from professional digital cameras. The conversion of raw data takes place as a time-saving background process with automatically stored results.



MidPip 4

Helps to remove color casts in different neutral tones. Up to four different color casts can be removed. Each color cast removal can even be manually fine-adjusted.



Red Eye Removal

Eliminates the effect of red eyes occurring in flashlight portraits



SC2G

Allows to distinguish different levels of gray when converting color images into grayscale images



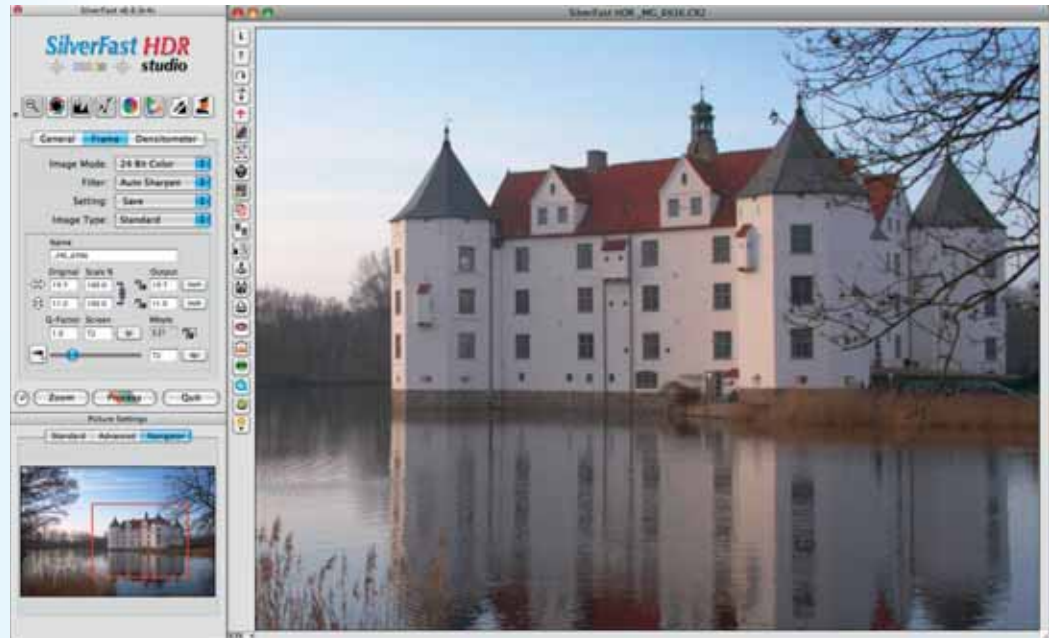
USM Plus

Unique Luminance sharpening tool with precise preview of the final sharpening effect

SilverFast® HDR Studio

„... HDR version is ideal for users who can produce RAW high bit data, the color neg handling is very, very good. Highly recommended!“

Andrew Rodney, Digital Dog



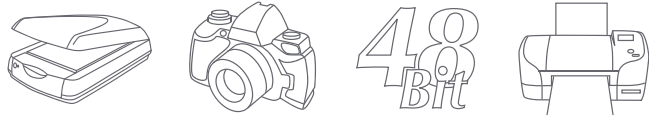
High-end version for 48Bit RAW data processing (High Dynamic Range Imaging) with JobManager, 48Bit color-corrected output, Virtual Light Table and much more (optional IT8 calibration). The HDR Studio version comes with all features of HDR and DCPro + AACO, JPEG 2000, USM Plus, Clone Tool, PrinTao and optional SilverFast PhotoProof.

In order to save RAW data with extended Dynamic Range (HDR - High Dynamic Range), the 48Bit TIFF format and later the CAMERA RAW format was developed. Even scanners or cameras with only 30 or 36Bit capability generate their maximum output range into this format. Regardless of the effective Dynamic Range supplied, the file will always become a 48Bit file. Normal scanning software saves images into a 24Bit file, discarding the extra information created by the scanner. 48Bit files retain all of the information supplied.

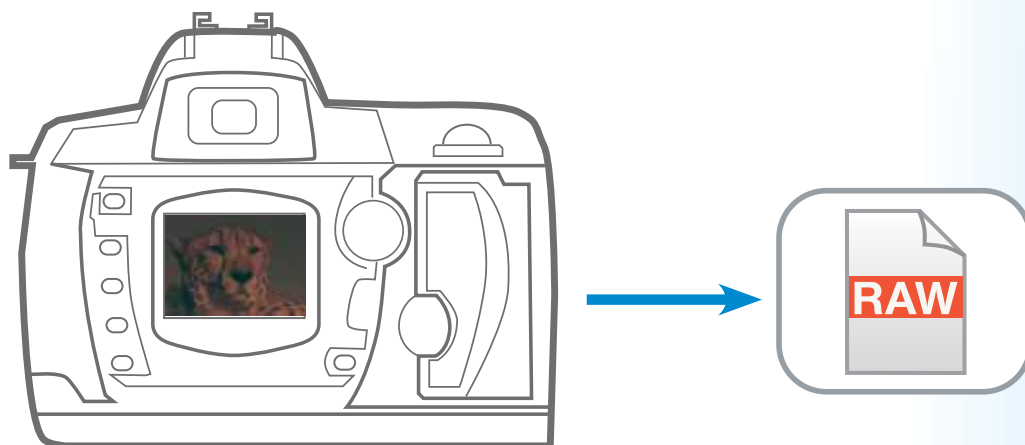
SilverFast HDR 6.6 supports Camera Raw Files



SilverFast HDR Software enables users to read and process 48Bit RAW files without being connected to a scanner. In HDR all SilverFast tools are available: Defining Output Size & Resolution, Auto-Adjust of Highlight/Shadow, Three Part Histogram, Gradation Curves, Selective Color Correction, Unsharp Masking, Color Cast Removal Slider, Color Separation, CMYK-Preview and more.



Supported RAW Data Formats



SilverFast DCPPro and DCVLT support RAW formats from a variety of digital cameras. A complete list of cameras you get here: <http://www.silverfast.com/show/dc-cameras-raw/en.html>

Marked in green are the cameras for which optimized RAW workflow profiles are available. This list is valid for the latest SilverFast release only. Older SilverFast versions may not support all listed cameras. The listed cameras are as well supported by SilverFast HDR and HDR Studio.

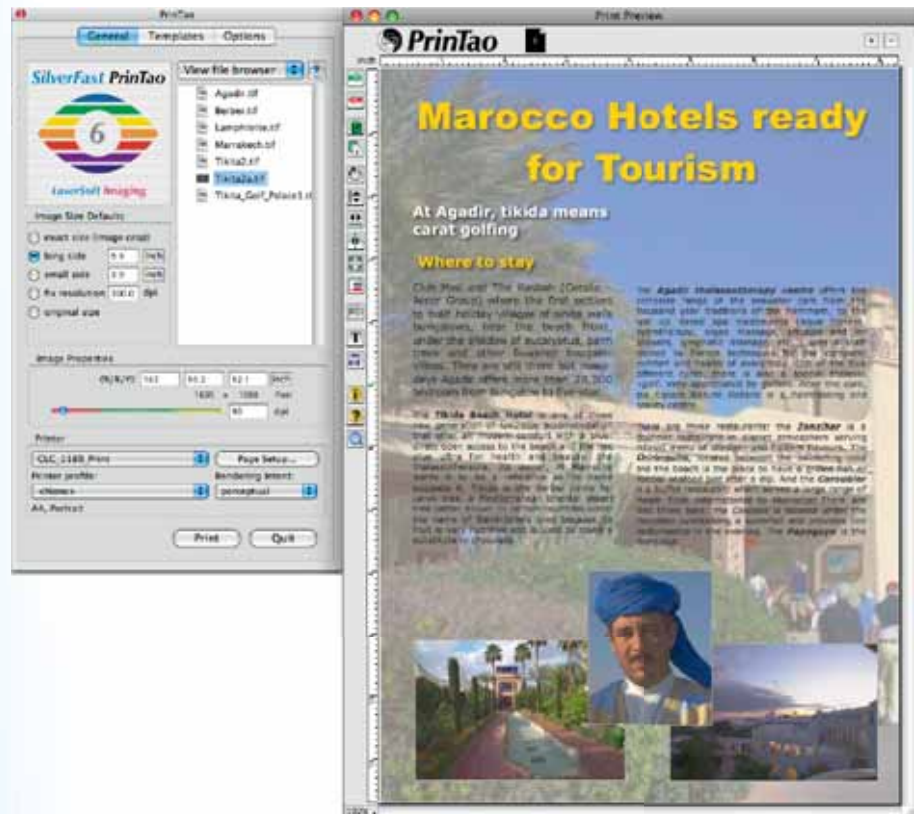
If your camera or relevant profile is not available it can be created by our developers. For this purpose LaserSoft Imaging needs your ready-to-use camera (including a lens, battery, etc.) for a few hours at its premises. Only a few test-shots under a controlled environment are needed for this procedure. Please contact our office via email (info@silverfast.com).

For all listed cameras SilverFast also fully supports Adobe DNG as an input format. If a camera is not listed as supported, it might occur that not all camera information present in the DNG file can be made use of. Such DNG files can of course still be read by SilverFast.

SilverFast® PrinTao

„PrinTao offers the opportunity to print my pictures directly or even to send a reliable proof to my printer. I can create layouts contact sheets and print them using the built in color management without any external application.“

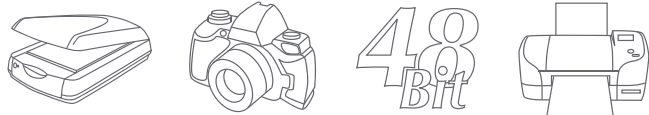
Karsten Kettermann, Photographer



An individual text is assigned to each image. The text can be positioned above, underneath or besides the picture. The text can be aligned to the left, right or centered. Aside from custom text, information from the IPTC or EXIF meta data can be assigned to the images as well. Custom text can be added, which is freely selectable regarding its character font, size, style, color and adjustment. This, for example, makes it possible to easily create headlines.

One of the most important functions is the input of a copyright text with the desired form and size. With only one click, this important information can be added to as many pictures as desired. You don't have to start your layout from scratch- PrinTao supports templates, allowing you to reduce repetitive steps in your layout process. You can either use pre-defined templates included in PrinTao or create your own.

Images can easily be printed with PrinTao. Aside from printing single images, contact sheets with individually selected images can be printed as well. The images can be positioned either automatically or manually, with the help of grids and auxiliary lines. Images can be scaled, mirrored, rotated at any angle or cropped.



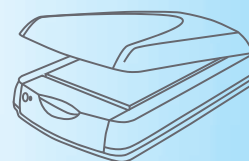
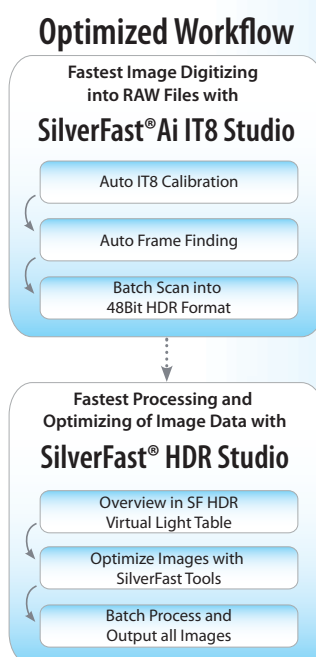
SilverFast® Archive Suite

„In fact, SilverFast has become integral to my workflow, allowing me to modify my images so that I can spend less time working on an image. [...] The same applies to SilverFast HDR!“

Matthew D. Erulkar, Assignment Photography

LaserSoft Imaging® presents a unique solution for fast and easy archiving of slides, negatives and reflective originals. With the new SilverFast® Archive Suite you get a bundle of two programs: SilverFast Ai IT8 Studio and SilverFast HDR® Studio. Since both of them are equipped with highly efficient functions you will enjoy maximum processing speed as well as an efficient workflow. An integrated Color Management System meets professional standards and completes this convincing package.

- **Saving lossless**
with the integrated 48Bit HDR concept (JPEG 2000)
- **Consistent colors**
with integrated and patented Auto IT8 Calibration
- **Predictable brightness and color**
with the advantage of Gamma-Synchronization
- **Increase of dynamic range**
with SilverFast Multi-Exposure®
- **Highest speed when loading large image files**
with the unique HiRePP® process
- **Fast and automatic frame detection**
to identify and process images quickly
- **Tutorial-Movies show and explain individually**
each function of SilverFast® with QuickTime Movies



The SilverFast® Archive Suite will enable you to perform all necessary steps for a professional and lossless digital backup from your treasured image collection without letting it out of your hands. Intelligent automatic frame finding enables quick saving of all images into a lossless HDR archive format (48Bit RAW). Entire image collections can be digitized in short time - the most effective way to prevent damage and loss.

SilverFast Multi-Exposure and the patented Auto IT8 Calibration ensure the optimum quality and security. The automatic IT8 Calibration has to be carried out only once, since all information is embedded into the file format to ensure that the post-processing by SilverFast HDR does not require any further calibration. Constant gamma synchronization of the 48Bit data ensures consistent brightness and color reproduction between SilverFast Ai and SilverFast HDR.

More information can be found at: <http://www.silverfast.com/sf/archive-suite>
or watch a QuickTime movie: <http://www.silverfast.com/sf/archive-suite-movie>

* Multi-Exposure is not supported by all scanners. Please check the list of scanners which support Multi-Exposure:
<http://www.silverfast.com/highlights/me-list/en.html>

IT8 Targets for Color Calibration

IT8-Targets auf dem Prüfstand

Kiel, April 2008



The high quality of LaserSoft Imaging's IT8 targets was also affirmed last year by the independent German lab Image Engineering, Frechen. Targets from various production batches have been colorimetrically measured. Color value deviations were in between an average Delta E from 0.54 to 0.72, which is far below the perception threshold.

"It can be stated that all IT8 targets from LaserSoft Imaging have excellent quality. They are perfectly suited for scanner calibration and fulfill highest quality requirements".

LaserSoft Imaging has one of the highest precision IT8 target productions in the world. Large manufacturers all around the world are using LaserSoft Imaging's high quality targets and are very satisfied with the quality.

We offer these high-quality targets independently from our patented SilverFast Ai IT8 software at very competitive prices.

The following targets are available:

Transmissive targets in formats of 35mm, 6x7cm and 10,2x12,70cm (4x5") on Fuji Provia 100F or Kodak Ektachrome Professional E100G film.

NEW Kodachrome 35mm target.

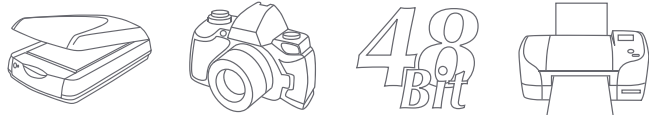
Reflective targets) in formats of 10x15cm and 12,70x17,78cm (5x7") on Fujicolor Crystal Archive Supreme or Kodak Professional Endura paper.

Full format reflective targets in format of 16x21cm on Kodak Professional Endura paper, mounted on polystyrol background.

LaserSoft Imaging manufactures Kodachrome Calibration Targets

For all those customers intending to finally scan all their valuable Kodachrome slides with consistent precise colors LaserSoft Imaging® is now offering Kodachrome IT8 Calibration targets with an integrated barcode out of their own high quality production.

As of today you can order original Kodachrome Calibration Targets at particularly favorable pricing from our Online Shop.



Kodachrome film is the professional's choice since 1935 due to higher sharpness, ultrafine grain and naturally vivid colors - quite simply the Look & Feel of Kodachrome. It was for many years the standard film for professional color photography, especially when submitting images to high profile magazines such as National Geographic.

Why is the calibration with a Kodachrome target important?

Accordingly the human eye will see more of the yellow spectrum contained in an Kodachrome image than the scanner's CCD. Consequently scanning a Kodachrome transparency with an ICC-Profile based on a Fuji or Ektachrome IT8-calibration, will produce bluish scans. Only with a dedicated Kodachrome calibration target can correct and original "Kodachrome colors" be achieved.

Learn more here about the SilverFast Scanner-Calibration. With the introduction of the Kodachrome targets we have also implemented several additional Kodachrome features in our SilverFast scanner software - sure to be of interest to anyone scanning Kodachrome film.

LaserSoft Imaging has established an excellent reputation with its own IT8 target production. That is why companies all around the world are using LaserSoft Imaging's IT8 targets.

Digital Camera Targets

Large companies all around the world are using LaserSoft Imaging's IT8 targets and are very satisfied with the high quality. A conventional IT8 target is not suitable for calibrating digital cameras. Therefore, we are proud to present the uniquely developed genuine LaserSoft Imaging camera targets.

We are offering these high-quality targets independently from our SilverFast DCPro / HDR packages at very competitive prices. You can order our targets from our Online-Shop.

The following targets are available:

Studio Target and Pocket Target

Individually-measured targets:

We offer individually-measured high precision targets to meet your special requirements. You will also find these items in our online shop.

Custom made targets:

LaserSoft Imaging can also provide specially-customized targets (e.g. with company logo and name) per customer request. Please contact us.

Some advantages of LaserSoft Imaging's IT8 targets:

LaserSoft Imaging's calibration targets ...

... are more precise than other manufacturer's targets, since they produce smaller batches.

... are more reasonably priced than many competitor's targets.

... are especially easy to use with patented SilverFast Auto-IT8-Calibration.

... features a significantly better dynamic range.

... comes with reference data on CD. (reference data for downloading)

SilverFast® Multi-DVD

Our „All-in-one“- solution for re-sellers.

The advantages:

1. One single DVD covers the entire LaserSoft Imaging product palette
2. All included Versions will run in Demo-Mode (encouraging follow-up business)
3. Optimized inventories with minimum effort
4. New Versions (Major releases) will be exchanged free of charge for the mist current versions
5. 5. Easy and automatic ordering and serialization by means of the OLS system



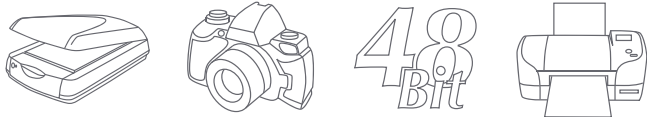
Price list

Our current price list can be downloaded at:

http://www.silverfast.com/download/dealer/SF_pricelist_en.zip

Or call us at +49 (0)431 / 56009 - 48.





SilverFast® Order & Licensing System (OLS)

Our Online Sales System for dealers and distributors.

The OLS is a simple, quick and flexible sales system for re-sellers and end users – regardless of your current location: Computer shows, roadshows or from the comfort of your office; a set of Multi DVDs and Internet access is all you will need to start selling.

Registration

Simply fill out the registration at
<https://www.silverfast.com/ols/en.html?view=register>
 and switch between a test account and a “live” account and use our system:

1. Quick and easy ordering of our new Multi-DVDs
2. Comfortable „On-Demand“-serialization of the desired SilverFast version
3. A huge download area: All you will ever need for your website – graphics, logos, PDFs etc

Login

Access to our dealer portal can be found on our LaserSoft Imaging homepage:



<https://www.silverfast.com/ols/de.html?view=login>

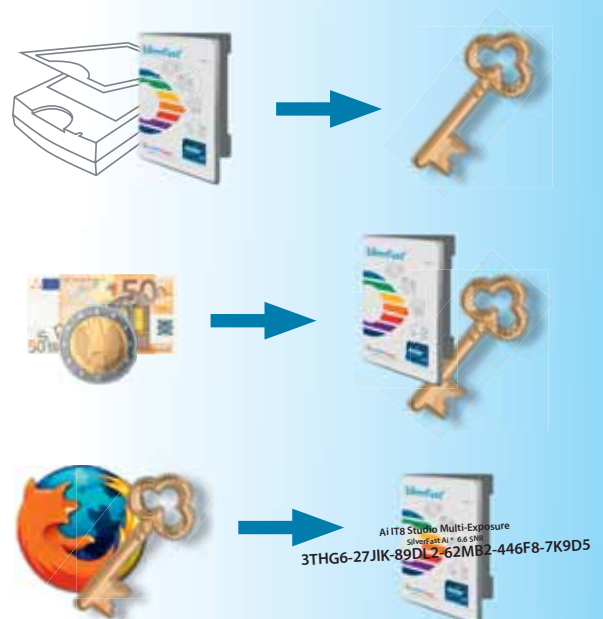
Product Key – Sale – Serial number

The following menus allow the selection and purchasing of the desired items (Multi-DvD, IT8 Targets, etc).

An individual Product Key is generated for software orders.

The Product Key will be delivered to customers with the Multi-DvD after payment has been received.

The customer activates his product on the SilverFast website and will then receive his serial number.





SilverFast®

the Digital Power Tool

Contact:

Headquarters:

Thomas Lübker - Director Sales

thomas.luebker@silverfast.com

US-Branch Office:

Boris Bischof - Director

boris.bischof@silverfast.com

Headquarters:

LaserSoft Imaging AG
Luisenweg 6-8
24105 Kiel • Germany
Tel.: +49 (0) 431/5 60 09-0
Fax.: +49 (0) 431/5 60 09-96
E-Mail: info@SilverFast.com
<http://www.SilverFast.com>

Office USA:

LaserSoft Imaging Inc.
625 Freeling Drive
Sarasota, FL 34242, USA
Phone: (+1) 941-312-0690
Fax: (+1) 941-312-0608
E-Mail: sales@SilverFast.net
<http://www.SilverFast.com>

