

SilverFast... Product Family

- What is *SilverFast...* ?
- Classification in two product groups
- Full version or *Special Edition*
- Upgrades
- Targeted user groups
- Supported **CANON** scanners
- Option(s) for scanners

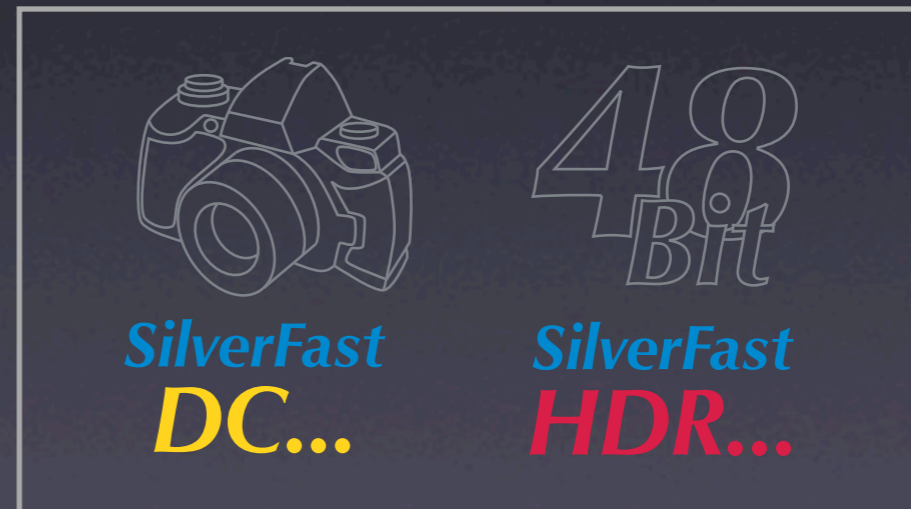
SilverFast... Product Family

Classification in **two** product groups

High-End scan software
individually adapted
to single scanner models



Pure imaging software
for editing and optimising
image files of miscellaneous sources



SilverFast... Product Family

Full version or *Special Edition*?

Both product groups are available as full versions and as *Special Editions*.

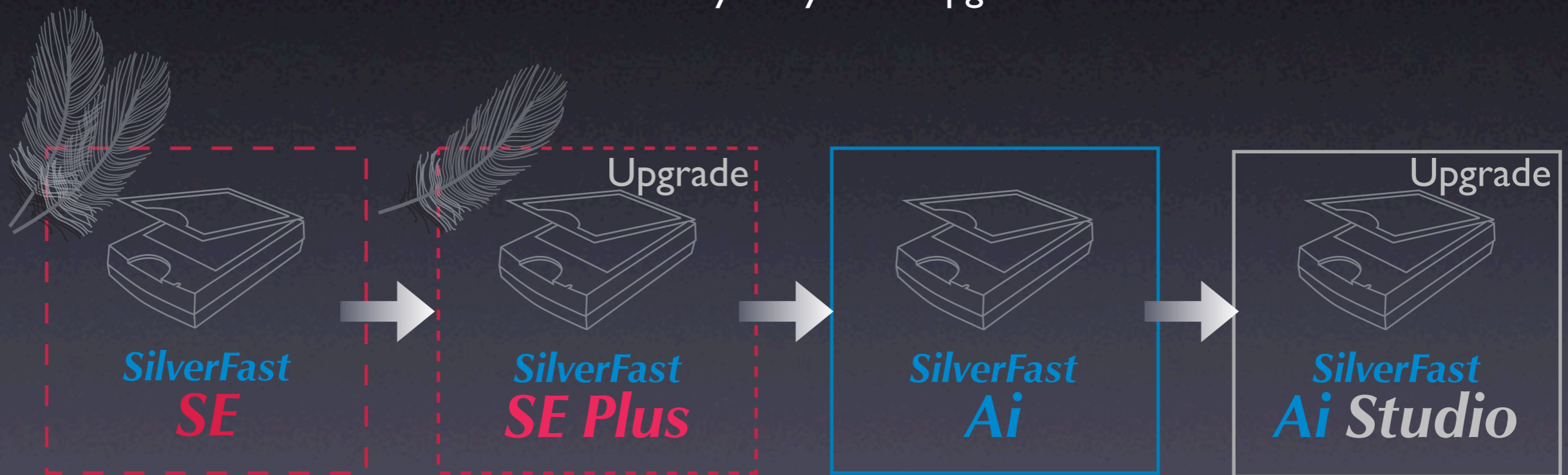
The *SE* versions are reduced in functionality and rather meets the needs of novice users and amateurs.



SilverFast... Product Family

Upgrade the *Special Edition* ... up to ... *Studio version*!

Test the full version first! Free demos available – www.silverfast.com
Than it's easy for you to upgrade!



**CanoScan
Bundle**

SilverFast... Product Family

Summary & Overview

	SilverFast Ai...	SilverFast HDR...	SilverFast DC...
application area	scan software	offline scanning	digital cameras
targeted user group	scanner operators with high quality standards	high speed workflows, prepress, advertising, stock photography, publisher, networks, ...	photographers
difference to ... SE versions	same internal engine, RGB only, no IT8, no Batch, no JobManager, no Expert-functions, ...	not available	same internal engine, RGB only, no calibration, no Batch, no JobManager, no Expert-functions, ...

**CanoScan
Bundle**

SilverFast... Product Family

Available versions and their names

	<i>SilverFast Ai...</i>	<i>SilverFast HDR...</i>	<i>SilverFast DC...</i>
<i>...SE</i>	<i>SilverFast SE</i>	–	<i>SilverFast DC SE</i>
<i>...SE Plus upgrade</i>	<i>SilverFast SE Plus</i>	–	<i>SilverFast DC SE Plus</i>
<i>...full version*</i>	<i>SilverFast Ai</i>	<i>SilverFast HDR</i>	<i>SilverFast DC VLT</i>
<i>...Pro upgrade*</i>	–	–	<i>SilverFast DC Pro</i>
<i>...Studio upgrade*</i>	<i>SilverFast Ai Studio</i>	<i>SilverFast HDR Studio</i>	<i>SilverFast DC Pro Studio</i>

* IT8- or DC-calibration optional available

SilverFast... Product Family

CANON scanners supported by *SilverFast...*



**CanoScan
Bundle**



CanoScan 300

CanoScan 600

CanoScan FB 1200 S

CanoScan 2700 F

CanoScan FS 2710

CanoScan FS 4000 US

CanoScan 8400 F

CanoScan 8600 F

CanoScan 9900 F

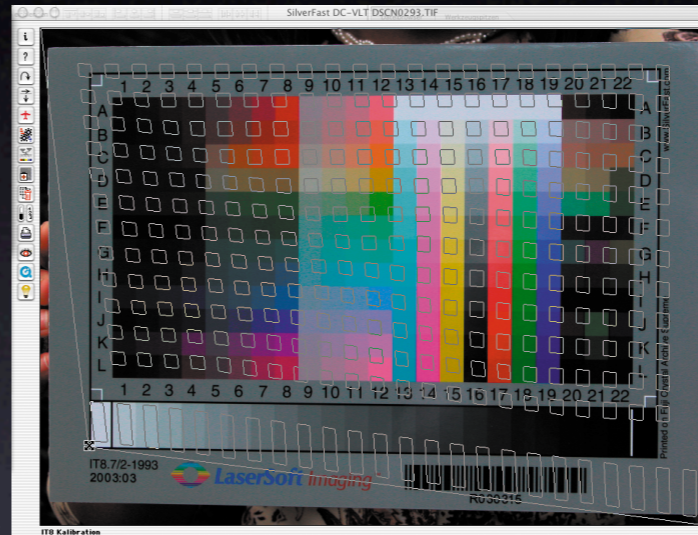
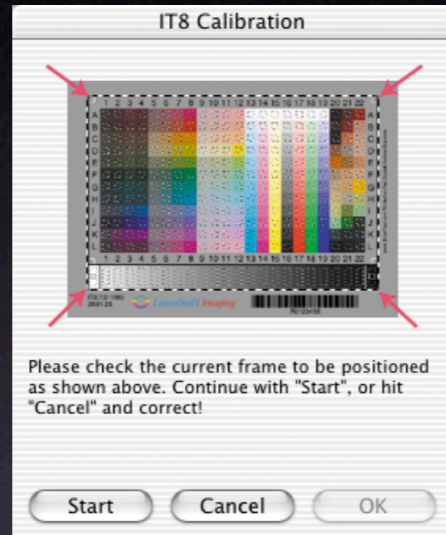
CanoScan 9950 F





SilverFast... Product Family

SilverFastAi... add-ons and option(s) for scanners



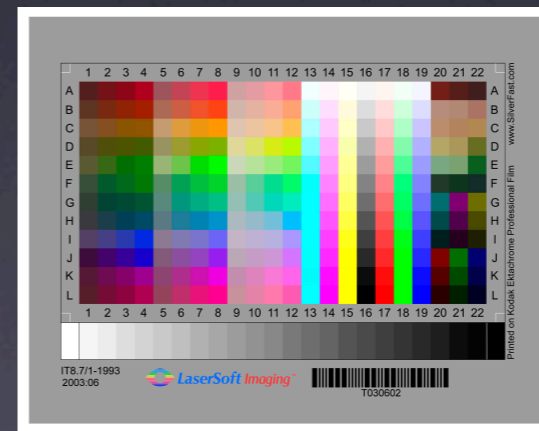
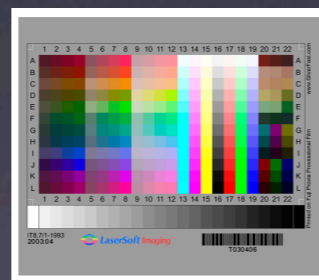
ICC profile



SF_R (DCS) E5700

Process of
IT8 Calibration

IT8 Calibration Targets



- 35mm: T
- 6x7cm: T
- 4x5": T + R
- A4: R

T = Transparency
(Fuji and Kodak)
R = Reflective

CanoScan Bundle

- What's inside the box ?
- One scanner but two scan softwares !?
- Installation
- Start ***SilverFastSE***
- Interface of ***SilverFastSE***

Content of CanoScan Bundle

What's inside the box ?



LSI content

- **SilverFastSE** paper covering, with serial number on back, CD-ROM.

Canon content

- CanoScan 8600F scanner
- (CanoScan 8400F scanner)
- (CanoScan 9950F scanner)
- ScanGearCS scan software
- set of film holders
- USB cable
- power supply
- ...

Installation

Confusion! One Scanner but **two** scan softwares !?



No problem !

LSI recommends to
install both !

Both softwares are completely independent and doesn't interfere.

SilverFastSE is a Photoshop Plug-in, *ScanGearCS* is a Twain module.

Installation

Installation of *SilverFastSE*



Insert installation CD into CD-ROM drive.
Keep it there until installation process is completely finished.



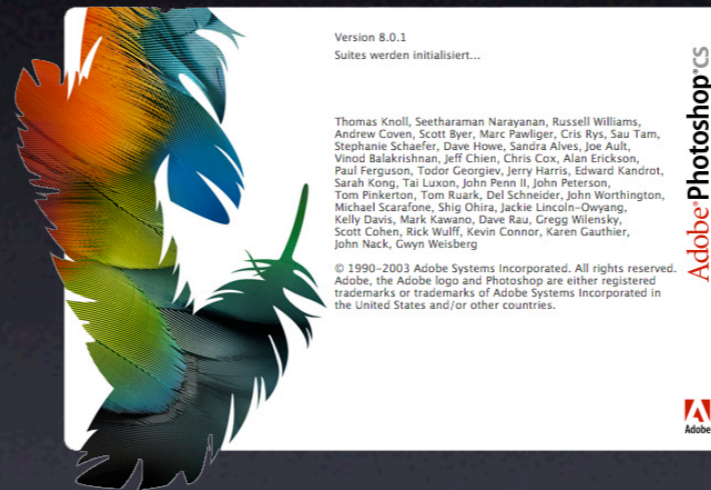
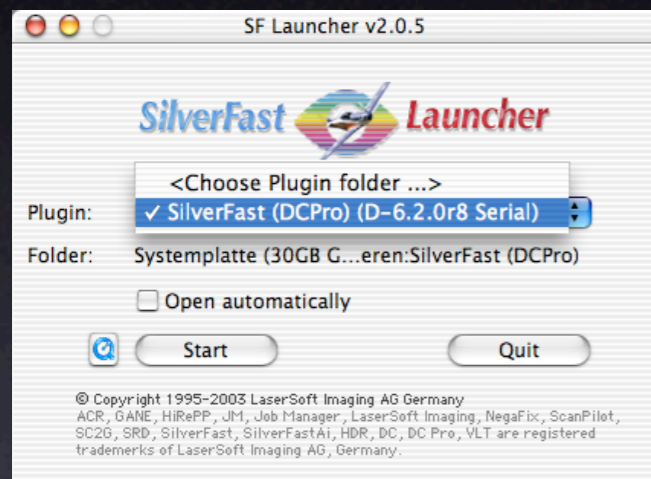
Take care that you are logged in
as “Root” or “Administrator” !

Select your language, continue with “Go”.
Languages: English, German, French, Spanish, Italian, Portuguese

Click on “Install SilverFast”.
Follow the guided installation process.

SilverFastSE User Interface

Three ways starting SilverFastSE



SilverFast Launcher

Stand-alone solution to launch *SilverFastSE* as a Photoshop plugin.
Very fast!

Adobe Photoshop
SilverFastSE as Photoshop plugin.
A complete solution with full colour management on all levels.

TWAIN module
Possible, but not recommendet solution!
Colour management is not possible.
SFSE-TWAIN modules for 8400F and 9950F are still available (Windows only).

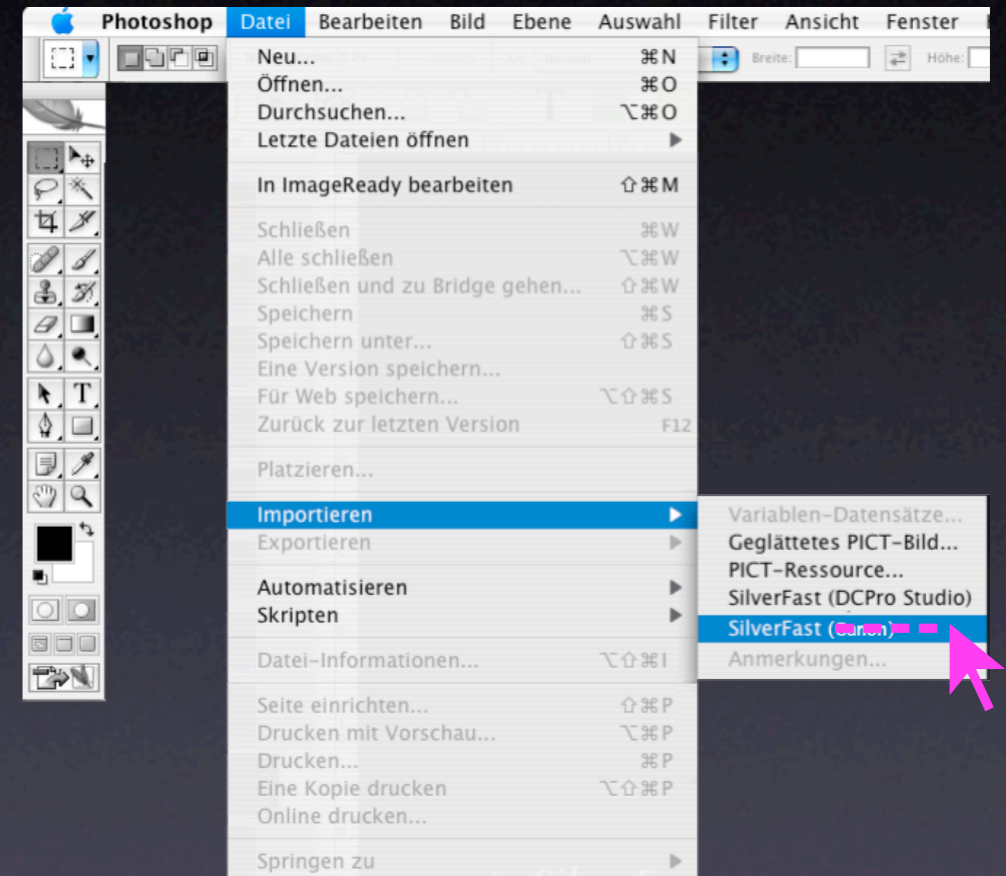
Starting *SilverFastSE*

Via *SilverFast Launcher* or Adobe Photoshop



SilverFast Launcher

Choose the plugin from the pull down menu.
Click on "Start".



Adobe Photoshop

Select "file / import / SilverFast (Canon)".

Starting *SilverFastSE*

Welcome dialogue



QuickTime Movies and Documentation

Hyperlink: <http://www.silverfast.com/show/pdfs/en.html>

Functions and Features

Hyperlink: <http://www.silverfast.com/highlights/v6all/en.html>

Online Tips, Tricks and Advice

Hyperlink: <http://www.silverfast.com/forum/>

Upgrade Information for this Version

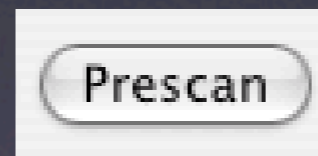
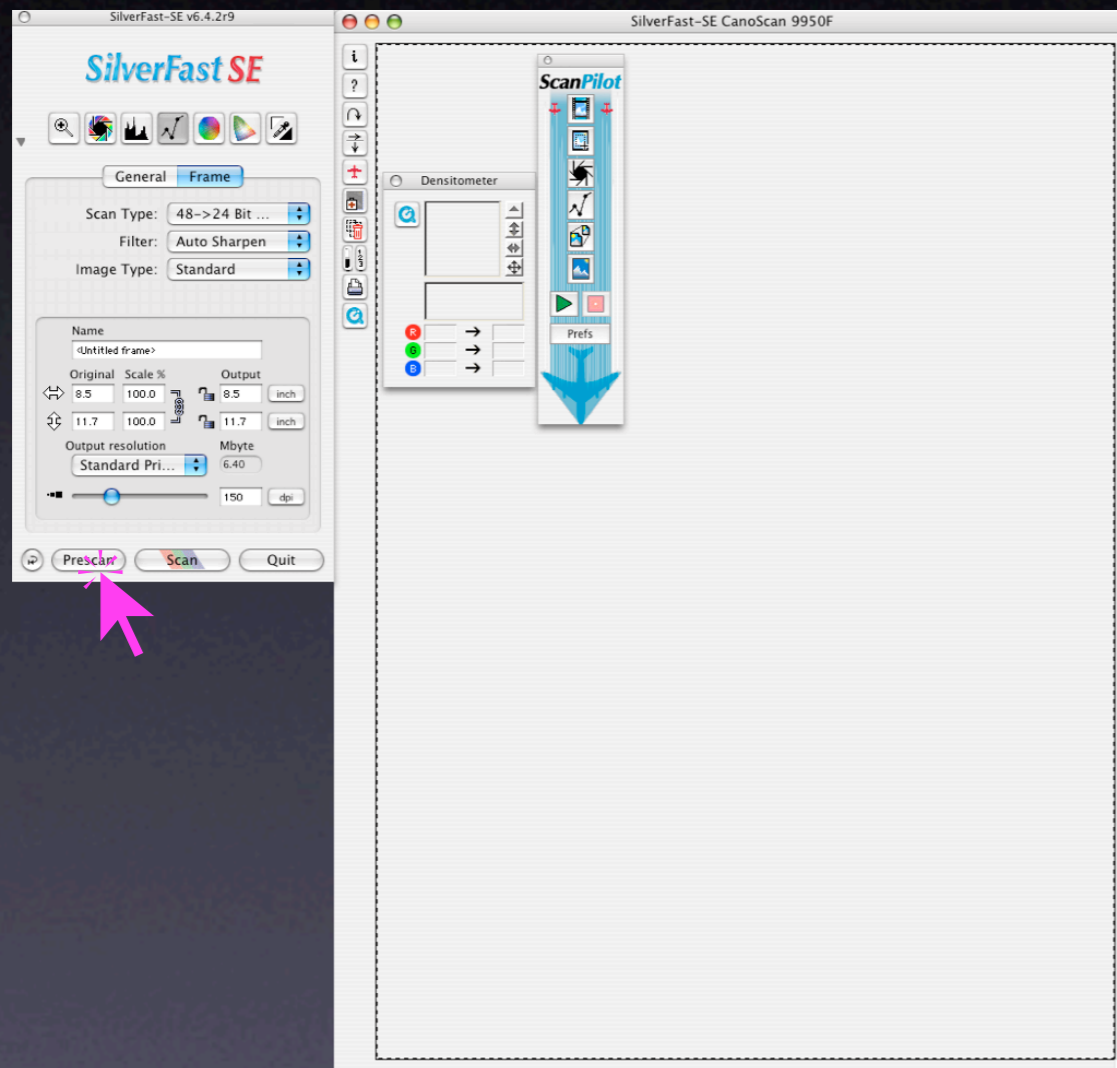
Hyperlink: <http://www.silverfast.com/checkonline/en>

Continue to SilverFast...

Click to launch *SilverFast* main dialogue

Starting *SilverFastSE*

Main dialogue



Click on “Prescan”-button to get an overview of the full flatbed.

SilverFastSE User Interface

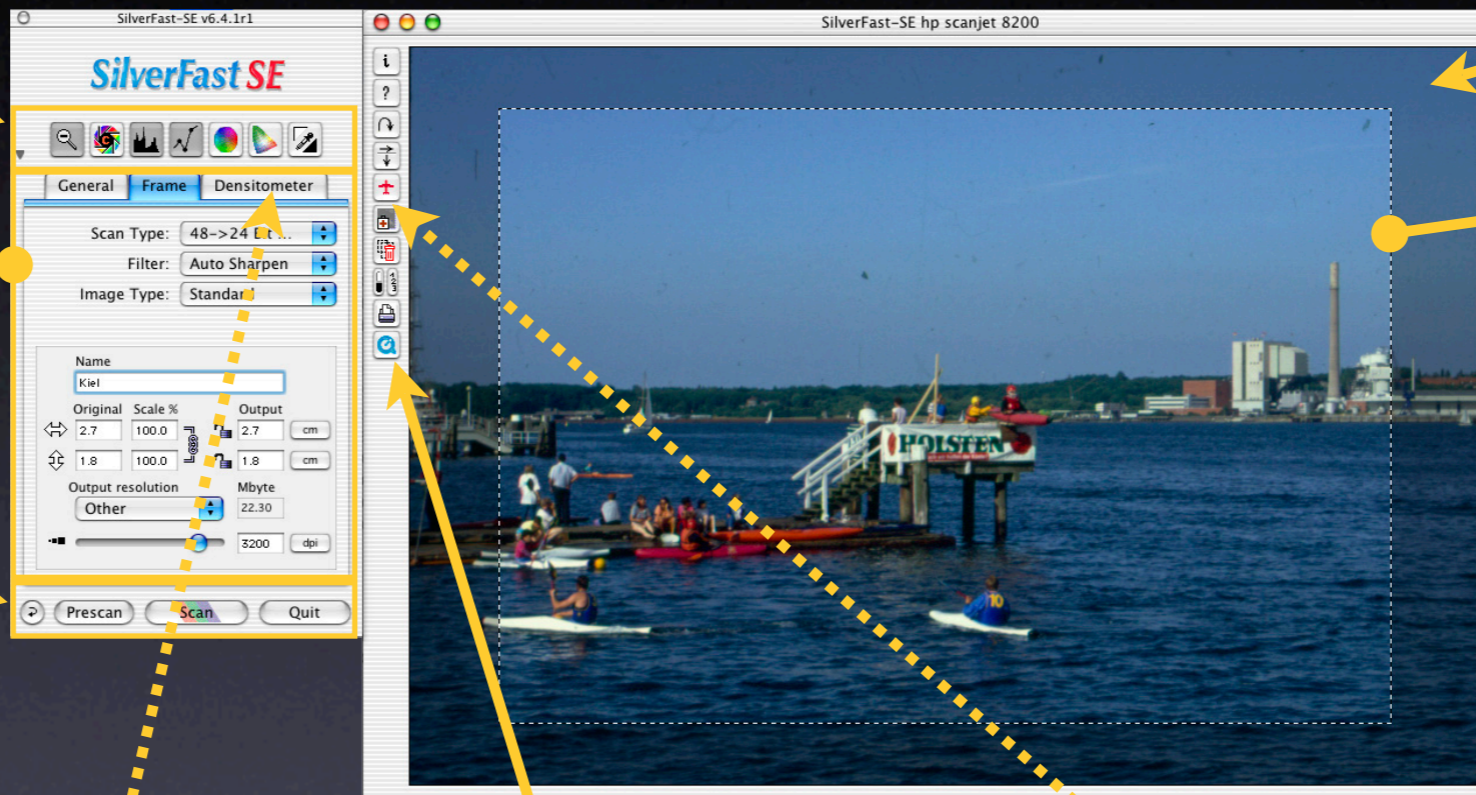
Overview of main dialogue

Tools bar

Three palettes

- General palette
- Frame palette
- Densitometer palette

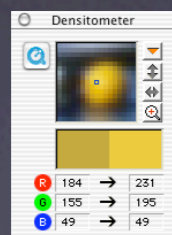
Start bar



Preview window

Scanframe(s)

- Unlimited number of frames
- Each with individual settings



Densitometer

- fixed palette (top)
- OR
- floating window (left)

Special functions

(variable bar, depends on scanner and software)

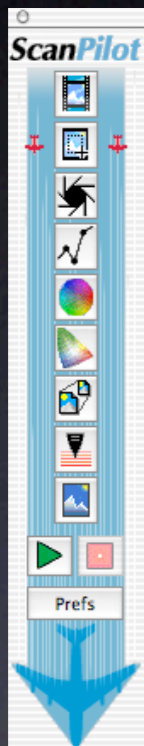
ScanPilot

(floating window, currently hidden)



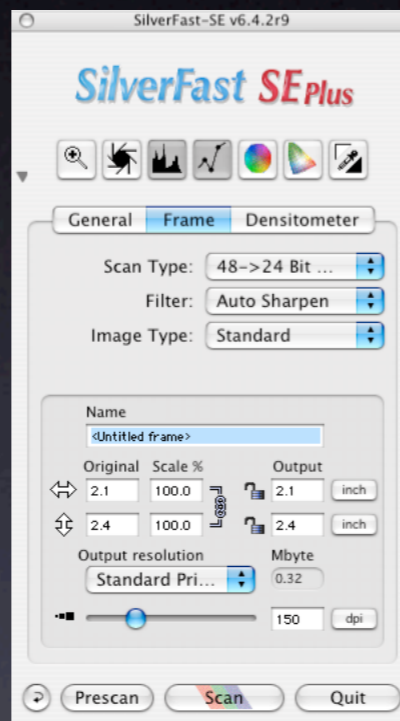
SilverFast... User Interface(s)

Primary user profile that *SilverFast...* is targeting
– corresponding to the “three” user interfaces



**SilverFast
SE**

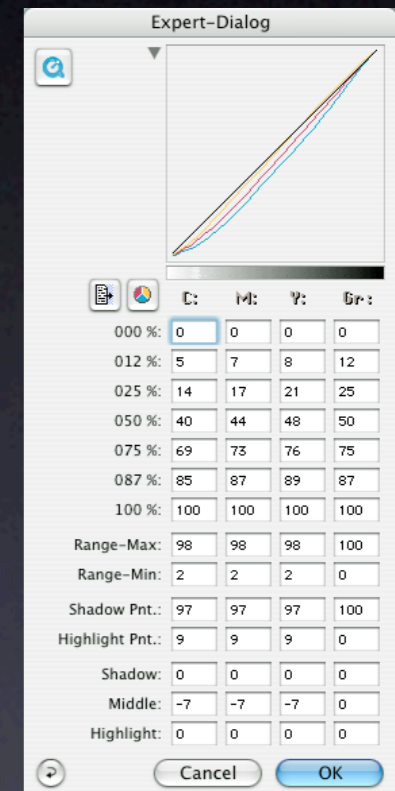
**SilverFast
SEPlus**



**SilverFast
Ai**



**SilverFast
AiStudio**



Entry level
novice user,
home office

Standard level
regular user,
photographers,
prepress people

Expert level (SFAi.. only)
professional user,
drum scanner operator