

SilverFast®

SilverFast DCVLT

DCPro

DCProStudio

Deutsch
English
Français



LaserSoft Imaging®



SilverFast® Software-Licence Agreement

Do not open the software package or use this software until you have read and agreed to the terms and conditions of this software-licence Agreement! If you do not accept these terms and conditions, please leave the software in its packaging untouched and send it back to *LaserSoft Imaging* immediately!

SilverFast (trademark) is a software package comprising software and user manual for a method of generating scans for the subsequent production of colour separations and printing images. *LaserSoft Imaging* ("LS Imaging") has developed the software and owns all rights of it:

1. Copyright

- (1) The user and licensee acknowledges that the copyright of the software in both source and object code form is owned by *LS Imaging*.
- (2) Manual and other documentation are protected by copyright. Illegal usage, also of the images of the manual, will cause claim for damages.

2. Licence

- (1) *LS Imaging* grants the licensee an exclusive and non-transferable licence to use the software object code and user manual for his or her own use.
- (2) This licence authorizes the use of *SilverFast* on a single personal computer at one time. Separate licenses are required for use on multiple processors and/or multiple sites.
- (3) The user and licensee is not allowed to copy in whole or in part *SilverFast* except for the purpose of making a backup copy. The licensee is neither allowed to copy in whole or in part supporting documentation supplied with *SilverFast*.
- (4) The software contains confidential information; this licence does not allow the licensee to change, adjust, to decompile, to disassemble or in any other way trying to find out the source code.
- (5) The licensee is not allowed to rent, lease, sublicense or loan the software. Transfer of software and documentation is possible under the condition that all software and documentation is transferred, no copy (for backup purposes) is retained and the third party accepts this Licence Agreement.

3. Validity

- (1) This licence will be valid from the day the software package is opened. It will be valid until the day *LS Imaging* or the licensee terminates this agreement.
- (2) This licence agreement may be terminated to the terms and conditions as follows:
 - (a) *LS Imaging* may terminate this licence upon written notice if the licensee is in breach of the agreement in whole or parts of it.
 - (b) The licensee may terminate this licence upon written notice to *LS Imaging* under the terms and conditions of No. 4, if he sends back the opened software package, deletes the copy on his computer and any backup copy immediately.

4. Warranty

- (1) *SilverFast* is provided „as is“. *LS Imaging* does not warrant – neither expressed nor implied – the usefulness of the software *SilverFast* for a particular purpose or its merchantability or the fitness for licensee’s requirements. Although every effort has been made to eliminate errors, *LaserSoft Imaging AG* does not warrant that *SilverFast* is free of errors.
- (2) The licensee has to examine the software for considerable, recognizable defects within 14 days. These defects must be notified to *LS Imaging* in writing. Hidden defects are to be notified upon recognition in writing. Otherwise software and documentation are approved without reserve.
- (3) At considerable defects *LS Imaging* has the choice of either providing the licensee with another version or to eliminate the defect within reasonable time. If *LS Imaging* is not able to allow use of the software within this time, the licensee may reduce compensation or terminate this contract.
- (4) Upon assertion of warranty the licensee is obliged to send back software and receipt at the costs of *LS Imaging*.

5. Limitation of Liability

In no event shall *LS Imaging*, a distributor or authorized dealer be liable for any direct, indirect or consequential damages including economic loss even if *LS Imaging*, the distributor or authorized dealer has been advised of the possibility of such damage. The licensee agrees that any liability of *LS Imaging* arising out of the usage of *SilverFast* whether in contract or in tort shall not exceed the amount paid by the licensee for the software involved.

6. Trademarks

SilverFast and the trademarks mentioned in the documentation are (registered) trademarks of *LS Imaging* or their respective owners. The usage of these trademarks, logos, documentation, screenshots can only be allowed by *LS Imaging* or the respective owners. Illegal usage will cause claim for damages.

7. Ineffective Provisions

Should individual provisions of this contract, for any reason, found to be or become ineffective, or should a fulfillment discrepancy arise, then notwithstanding this agreement shall remain in full force. A provision that is closest in the scope of the legal possibilities of what the parties intended - or if they had considered the provision would have wanted - shall replace the ineffective provision or the fulfillment discrepancy, if necessary retrospectively.

8. Amendments

Amendments of this Agreement have to be in writing.

9. Applicable Law

Applicable law is the German law; the United Convention of the International Sales of Goods (CISG) is hereby expressly excluded.

Inhalt

Content

Table des matières

Deutsch	4-27
English	28-51
Français	52-76

Registration

Please register take a minute to this software. It will enable you to download free updates for a limited time, and to contact technical support by e-mail or fax. You can register on-line at

<http://www.silverfast.com/reg/en.html>

Your personal information will be kept confidential.

Registrierung

Für die Registrierung der Software, die Sie berechtigt, kostenlose Updates vom Internet herunterladen, verwenden Sie bitte das Registrierungsformular auf unserer Internetseite

<http://www.silverfast.com/reg/de.html>

Ihre Daten werden vertraulich behandelt.

Enregistrement

Enregistrez votre logiciel par notre site d'internet www.silverfast.com et vous avez le droit de télécharger des mises à jour.

<http://www.silverfast.com/reg/fr.html>

Ces informations données sont traitées confidentiellement.

Introduction



Dear *SilverFast* User,

congratulation for buying *SilverFast* the best software for scanners and digital cameras in the world today! Since imaging is becoming the fastest growing technology of our time, we are proud to contribute a significant piece to ease the challenge of working with digital imaging. In this respect *SilverFast* with its intelligent automatic functions, its two-level user interface and integrated QuickTime movie tutorials is setting the new standard for usability and sophistication in digital colour reproduction.

We are constantly looking to enhance *SilverFast* and are welcoming every development proposal or criticism. Please also look at our *SilverFast* Forum (<http://www.silverfast.com/forum/>) and take part in the discussion on different subjects.

With best wishes for brilliant pictures.

Yours sincerely
Karl-Heinz Zahorsky
President & CEO
LaserSoft Imaging AG

Kiel, December 2005



Availability of certain software features

Some of the features discussed in this manual are partially available only in special *SilverFastDC...* versions. Some functions are optional and only fully functional after performing a "StudioUpgrade". Functions going out over the extent of *SilverFastDCVLT* are coloured underlaid as follows:

brightly green

SilverFast DC Pro

brightly yellow

SilverFast DC Pro Studio

Functions of *SilverFastDCPro* are also available in *SilverFastDCProStudio*.
SilverFastDCVLT, *DCPro*, *DCProStudio* and the *VLT* are not available for Mac OS 9!



Installing SilverFast DC...

Insert the *SilverFast* Installation CD into the drive.

If the CD does not launch automatically, please open the CD manually and double-click "Installer".



- Select your desired **language** in the "Welcome-Dialogue" and hit "Go". A new chooser window will open.

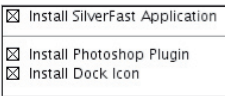


- You may choose the type of installation in the menu „**SilverFast Installation**“. You may also install the PDF-documentation and the QuickTime movies from here. Continue by clicking the button „**Begin installation**“.

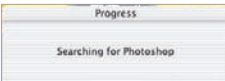
Depending on your operating system, the administrative rights are checked. Continue with "OK".



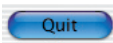
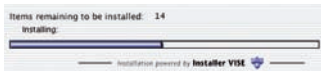
The installation is launched by clicking the "Continue" button. Please accept the license agreement by checking "Accept".



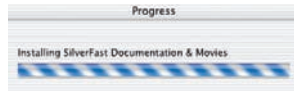
In addition, Macintosh users can select if they want to launch *SilverFast* by means of the "SFLauncher" application, or use the Photoshop Plug-In. Continue by hitting "Install".



In case the Photoshop Plug-In was selected, *SilverFast* now searches for the installation path of Adobe Photoshop and installs itself there.



The successful installation is prompted by clicking "Quit". After this the PDF files, as well as the QuickTime Movies are installed.



- You will find up-to-date information under "SilverFast ReadMe" which might not have been included at printing time of this instruction.



- "SilverFast Manual / Movies" contains a selection of PDF files and QuickTime Movies.



- "Acrobat Reader / QuickTime" enables the installation of the Adobe Acrobat Reader and the QuickTime program".

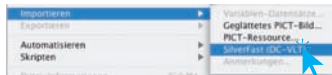
Quick-Start *SilverFastDC VLT*, *-DCPro*, *-DCProStudio*

1. Start *SilverFast*



Start from *SFLauncher*: Start *SFLauncher* by double-clicking the application. Under "Plugin" select the appropriate *SilverFast* Version and click "Start".

Start from *SFLauncher*: Start Photoshop and select your "*SilverFastDC...*" under "Import" under the "File"-menu (Windows: "File"-Menu).



2. Serialization

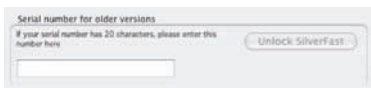
Depending on the current version of *SilverFastDC...* enclosed in this pack, you will have received either a 20- or a 30-digit serial number. Please insert the Installation-CD of *SilverFast* into the respective drive before serialising the software. Please ensure that you are logged into your system as ROOT / Administrator.

When launching *SilverFastDC...* for the first time, both the scan-dialogue window and the serialization window will open. Please enter your name, your company as well as the *SilverFastDC...* serial number.

Please note that the 20-digit serial number is to be entered without spaces and in capital letters. Make sure that the number you enter consists only of numbers between 0 and 9 and letters between A and F.

Some versions and upgrades will require a 30-digit code in future, which is made up of 6 groups of 5 values each. This code consists of numbers between 2 and 9 (no ones and no zeros), and all letters between A and Z – except the letters "i" and "o".

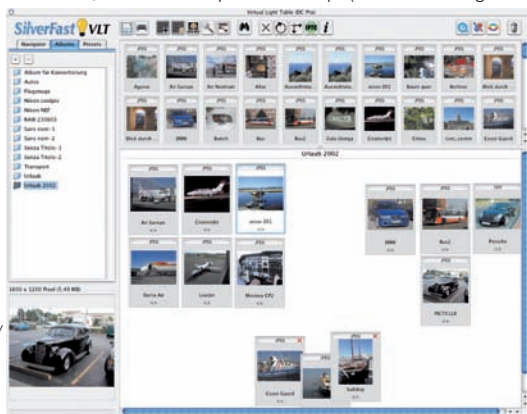
Click "**Unlock SilverFast**" once you have entered all data.



3. *VLT* – The virtual light table

When using *SilverFastDC...*, the *VLT* will open at startup. (*VLT* = virtual light table).

Three palettes
For browser, albums
and presets.



Toolbar

Current
overview

Current album

Magnifier window

3.1 A VLT overview

Now use the browser window to select a directory which contains images. If a digital camera is already attached, you may also access the camera data directly. All images contained in the directory will be displayed as thumbnails in the overview window.

Images can be selected and copied from the Overview work area of the VLT to the Album work area using the **"Drag and Drop"** feature. This will copy the files to the album- the original files remain untouched! Deleting files from the album does not affect the original files either.

Additionally, images in the Album can be sorted, the file names can be changed, comments can be added, images can be rotated, etc....

The thumbnails' height can be individually adjusted for the Overview, Album and Magnifying Glass windows. The magnifying glass window always shows the area of the image corresponding to the position of the mouse pointer.

In the Album panel, you can move and organize images in different Albums. The contents of an album or the overview window can also be printed as contact sheet.

Double clicking on an image in the album will transfer you directly to the *SilverFast DC...* main window. This then permits you to optimize the image using all of *SilverFast's* tools. Once the desired image corrections and enhancements are chosen, you can click on the **"process"** button and the new optimized image file is saved back into the album. The processed image is identified with a green "LED."

Using the "Drag and Drop" feature, you can transmit large image collections to the integrated "JobManager". The "JobManager" in turn allows you optimize images in a very short time.

3.2 Camera / unload removable media

Launch *SilverFast DC...* and open the VLT.

Now, directly connect the camera or attach the removable data storage device that contains the images.

As soon as the storage device is recognized, the Import-dialogue **"Unload image media"** will open.

All recognized storage devices are listed under **"Source"**.

"Transformation" determines how the images are to be handled while importing them.

"Target" describes the album or the folder into which the images are to be imported.



3.3 Rename images automatically

The re-naming of images can be done while unloading them or later, with already saved image files.

The „re-name“ menu allows complex changes of filenames of any part of, or the entire collection of imported files. The re-naming dialogue is divided into 5 parts:

Image list: All images that have been found on the storage device or that have been selected by the VLT are listed here.

Settings for new names: The check boxes define how the old file names are to be treated.

Expert mode: Experienced users may also enter the changes for filenames directly (as a program command).

Possible actions: In this part of the dialogue it is decided if the mages are to be renamed, moved or copied while importing them.

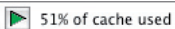
Re-naming example: A demonstration how the set parameters will affect the file names.

3.4 Conversion of camera RAW data files

SilverFastDC... allows a quick conversion of RAW-Data files in the background.

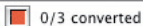
This is done by choosing the images to be converted in the overview of the VLT, and dragging them into an Album.

As soon as camera Raw-data is moved into an active Album in the VLT, a small button with a **green arrow** will appear at the top of the Album window. The size of the current **cache memory** is displayed next to this button.



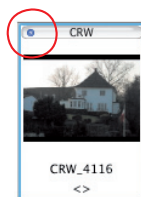
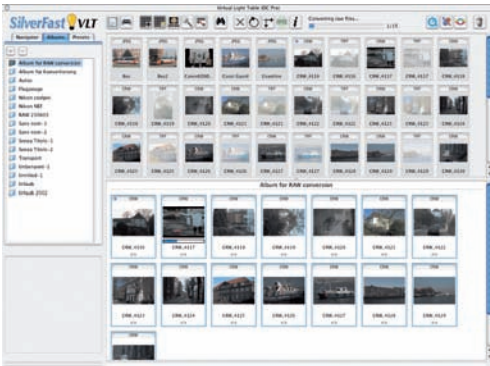
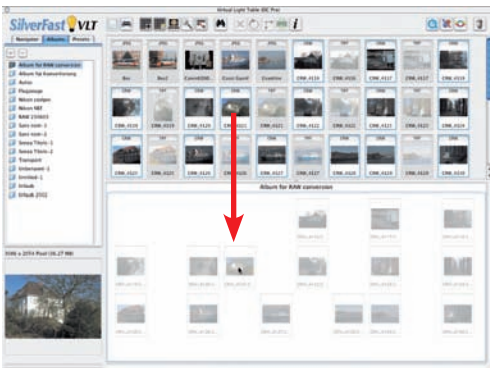
In case the cache memory is mostly used up it can either be emptied, or more cache memory may be assigned.

Clicking the green arrow launches the conversion process. The arrow will then switch to a **red square**.



By clicking on to red square the conversion can be interrupted at any time. The square will then change back into the green arrow.

If a RAW-Data image has been converted, the thumbnails are marked with a small blue dot on the upper left corner of the thumbnail image.



4. Image optimization in *SilverFast DC...*'s main dialogue

Double clicking an image in the *VLT* will open this image in the main dialogue. All functions for correction that are known from all *SilverFast Ai* scanner versions are now available to the user.

4.1 Dialogue "Image settings" (correction of brightness and white balance)

Any adjustments performed in the „image settings“ dialogue will directly influence the raw conversion function of *SilverFast*.

Depending on the kind of opened image, the window changes its appearance. If JPEG, TIF or RAW data files that are not fully supported by *SilverFast DC...* are opened, the „basic“ version of the dialogue opens.

When opening raw files, for which *SilverFast DC...* is using an internal conversion profile, the software will display the „extended“ image settings dialogue.

Exposure: The slider simulates a change in exposure time of the image. The range is generally 3 apertures.

White balance: The white balance of the image can be set by this slider. By this, an incorrect alignment can be compensated.

Light source: By means of the popup menu, presets for certain standard light sources can be chosen. e.g. „Daylight“. The default setting is „as shot“, if a light source had been selected by the camera. Otherwise, *SilverFast* will automatically adjust for the proper color temperature. The default setting is „as shot“, if a light source had been selected by the camera. Otherwise, *SilverFast* will automatically adjust for the proper color temperature.

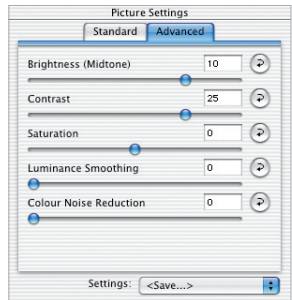
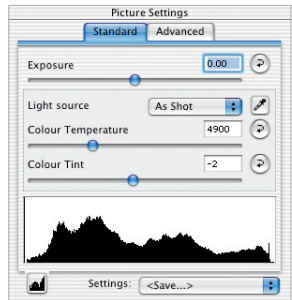
Pipette: The colour temperature of the image can directly be measured by the pipette. For this, a neutral part of the image should be selected. The white balance slider will jump to the measured position instantly.

Colour: The colour cast in the image is affected by this slider. Simply said: the colour temperature refers to a shift between RED and BLUE. By means of „colour“, an element of GREEN can be added or subtracted from the image.

Smoothing of luminance: This operates like a filter. By this, the highlight noise within the luminance channel of the image can be corrected. The filter thus only affects the luminance (The „L“ channel in the Lab colour space), and not the colors.

Colour-distortion reduction: This is a filter that corrects the noise in the color channels („a/b“ channel) of the image.

Settings: Saves parameters for Rawconversion for reloading.

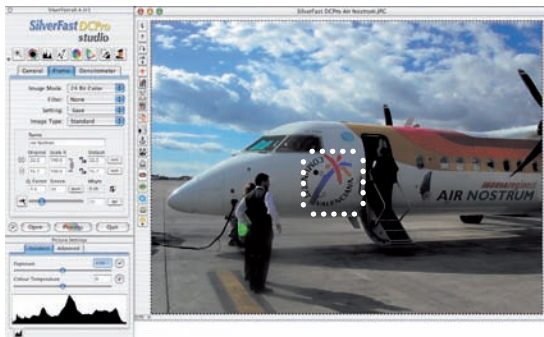


„Extended“ dialogue

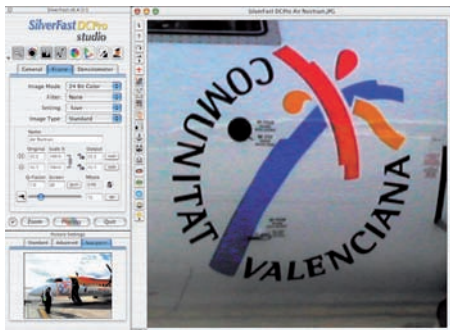
Realtime Histogram: At the lower edge a result histogram of the current picture frame is indicated to the „standard“ dialogue. The display reacts in real time. In contrast to the normal histogram dialogue, the picture settings dialogue shows the final or result histogram. Thus the histogram, of the resulting picture - after the conversion in *SilverFast DC...*

All parameters applied in *SilverFast*, are thus already contained herein. In the normal histogram dialogue however the source or input histogram is shown, which displays the picture - before the editing with *SilverFast DC...*... Only if one presses the „Alt“ key in the normal histogram dialogue, the goal histogram is indicated there also.

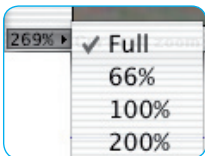
4.2 Zoom



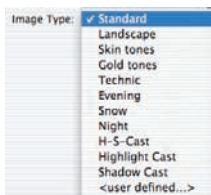
Holding down the “Ctrl”-key turns the mouse button into a plus-magnifier. To perform a zoom, simply keep the key pressed and drag a scan frame within the prescan window. The contents of this frame will immediately be magnified once the mouse button is released.



Alternatively, a preset zoom ratio can be selected in the pull down menu in the lower left of the prescan window.



4.3 Image Type / Auto-Adjust



Under “Image Type”, make the appropriate selection to configure the “Auto-Adjust”, so the automatic image control knows how to optimise the image.

Immediately after the selection of an Image Type, the Auto-Adjust is applied automatically (notice how your image is optimised).

If you do not change “Image Type” selection you can press the Auto-Adjust icon in the tool bar to optimise the image. You’ll soon notice how highlights, shadows and midtones are automatically corrected.



4.4 Histogram



In the histogram you can change the highlights (white point), the midtones and the shadows (black point) by dragging with the mouse on the small movable triangles.

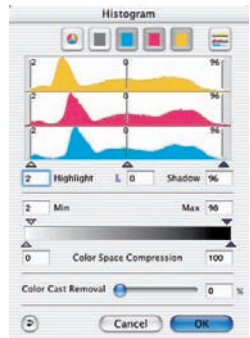
The respective values can be monitored with the input fields below and also with the input fields above and below the gray scale bar.

You can switch the midtone characteristic by toggling to “L” or “N” (L = logarithmic and N = linear).

Professional users can use the input fields and movable triangles “Min” and “Max” to adjust highlight- and shadow values.

The “Colour Space Compression” can also be freely adjusted with the small movable triangles.

Colour casts which may possibly be there in the image can be reduced with the slider at the bottom of the dialogue.



4.5 Correcting overall Brightness



If the image looks too bright or too dark you can open the “Gradation Dialogue” from the tool bar.

Use the midtone slider to correct the overall brightness of your image.

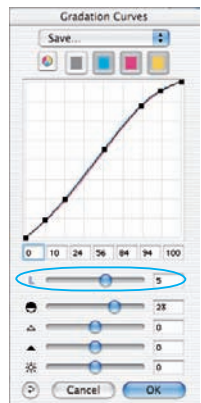
Use the second slider to correct the contrast.

Sliders for highlights, shadows and brightness which allow further corrections, should be carefully used. Wrong settings can immediately lead to loss of tonal range, hence, to loss of image details.

Individual corrections can also be achieved by directly moving gradation points on the curve or inputting values into the input fields for gradation points accordingly.

Gradation curves can be saved as well as previously saved curves can be loaded here.

Any correction that you perform can easily be undone by typing “Command-Z” and redone by typing “Command-Z” again (“Ctrl-Z” on a Windows PC, respectively). In fact, you can toggle between the two.



4.6 AACO – Auto Adaptive Contrast Optimisation

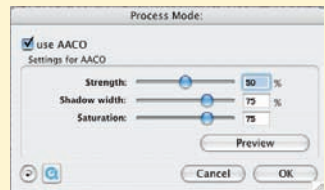


SilverFast AACO is an excellent tool for the correction of dark, too much contrast bearing image parts while preserving the details in the highlights.

AACO is activated by clicking the respective button located in the vertical toolbar, left of the preview window.

A dialog will open, and the therein set parameters are directly projected onto the current image.

For checking the before/after effect, AACO can be activated and de-activated by means of the checkbox.



4.7 Global Colour Correction



In this dialogue, you can change the entire colour rendering of the scanned artwork.

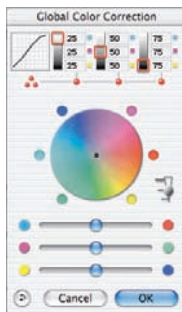
By clicking or click dragging within the colour sphere, the colour characteristic of the scanned artwork will be moved into the selected area.

Three slider below the colour wheel do allow comfortable global corrections

by moving between each of the complementary colours.

The degree of changes can be adjusted by means of the three-step slider.

The lower level will produce small changes. The upper level will produce large changes.



4.8 Selective Colour Correction



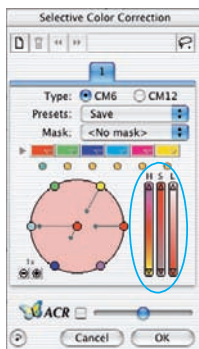
Open the Selective Colour Correction from the tool bar and click into your image on the coloured object you wish to correct. *SilverFast* recognises the colour and sets the colour in the centre of the colour circle accordingly.

By clicking into the top or the bottom of the HSB-Controls and holding the

mouse button down, you can change the Hue, Saturation or Luminance of the colour selected.

HSB-Correction allows easy colour control. You can get more sophisticated control by typing numbers into the cells of the Colour Matrix or by selecting presets from the pop-up menus in the top colour patches of the matrix.

You can also use the Colour Circle to make corrections. Up to six corrections (for each of the RGBCMY colours) can be made at a time.



You can do complex corrections, only related to certain image regions, easily with layers and freely drawn masks.



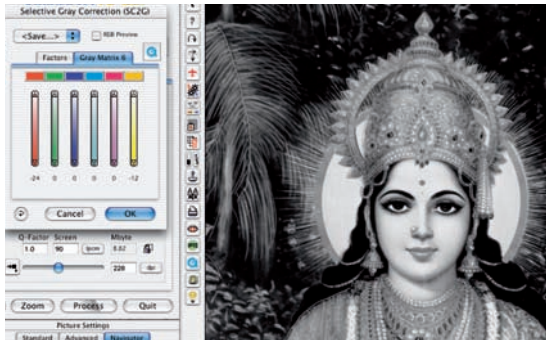
“ACR” (Adaptive Colour Restoration) when checked, is a new powerful function to correct image saturation automatically by adjusting the slider.

4.9 Selective Colour to Grey Conversion (SC2G)



SC2G serves to selectively converting primary- and secondary colours into shades of grey.

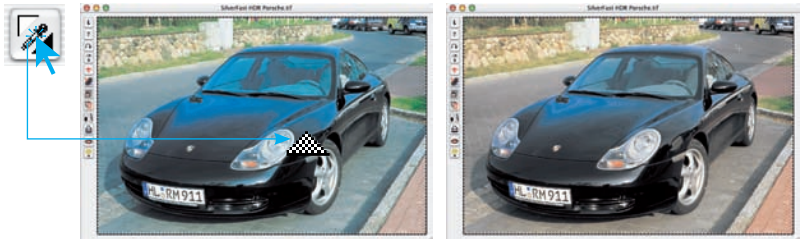
Under "Image mode" you switch from colour to grey mode. Clicking onto the button "Selective Colour Correction" opens the SC2G-dialogue. Clicking onto a shade you want to change will select the appropriate colour in the SC2Gdialogue.



Colour triangles above the colour to gray controls indicate the colour effected more visibly. Press the small top or bottom triangles on the controls. The top triangle will increase the brightness, the bottom triangle will decrease the brightness of a shade.

4.10 Multiple Neutralising Pipette (MidPip4)

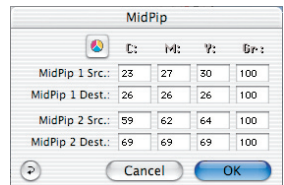
MidPip4 (Advanced Colour Cast Removal) allows removal of colour casts conveniently, which result from a mixed light situation.



If you want to set several neutral points at once, click onto the pipette and hold the "Option"-key while setting up to four neutral points. The pipette will remain as a cursor until you either click the pipette again or you have set the fourth neutral point!

In order to fine tune a neutral point, double-click onto the pipette tool and the Midpip dialogue window will appear. The value fields show the "Before- After"-RGB- or CMY-values of all neutral points. They are fully editable.

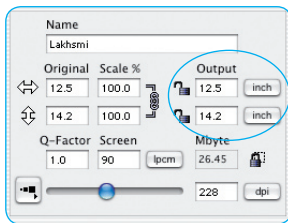
SilverFast offers the possibility of the most sophisticated colour cast corrections!



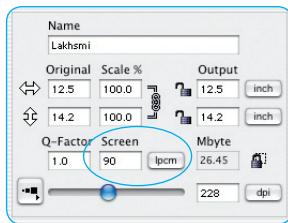
4.11 Image Dimensions



Set your image dimensions, such as output size and printing screen, as desired.



Setting the output size.



Setting the printing screen.

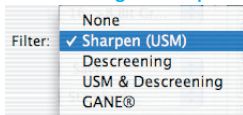


Pixel lock makes sure that no interpolation is taking place with the original data. After opening an image in *SilverFast DC...* you can close the pixel-lock and change output size and scaling without any influence on the file size.

The amount of pixels remains unchanged.

Please note: dot screen and output resolution may not be altered!

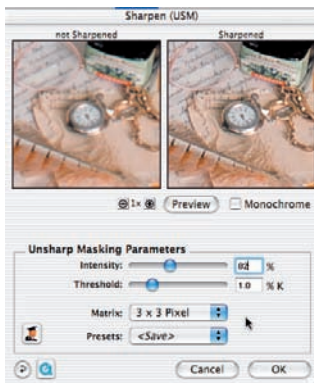
4.12 Defining Unsharp Masking



Under "Filter", select "Unsharp Masking" to define the sharpness of your image. Since sharpness is related to image

scaling and resolution, make sure you have set output size and output screen of your scan before setting Unsharp Masking.

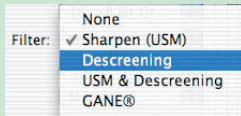
Click the Preview button in the Sharpen / USM dialogue and then the area to be examined in the preview window in order to judge the focus of the original. *SilverFast* will display a preview of the selected area in full output resolution.



The new versions of *SilverFastDCStudio*-Versionen now contain the fully scalable USM dialogue. By this means it is possible to obtain a realistic sharpening preview on a larger part of the image.

The size of the dialogue box is now resizable by means of a resizing button. By clicking and dragging the corner button, the USM window can be expanded up to the entire monitor size. Initially, the contents of the prescan window are only enlarged by pixel-enlargement – the same effect as pressing the "+" button. The real expansion of the visible area is achieved by keeping the "Shift" button pressed while clicking the "Prescan" button (i.e. it functions like an "Update-button").

4.13 Removing the Screen from Printed Artwork

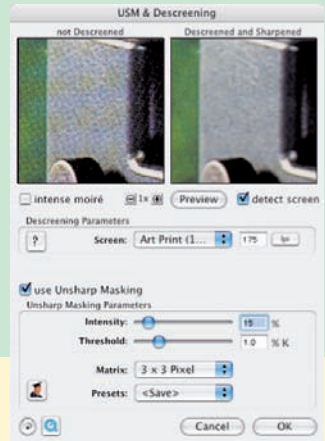


First choose descreening from the filter menu. Choose the screen ruling of your original in the inherent dialogue:

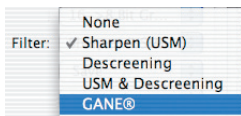
either manually by entering the numbers or simply by choosing one of the entries in the default setting menu.

With "Prescan" you can just the same as with Unsharp Masking, get a 1:1 preview with "Before-After-Images" and easily check the parameters set accordingly. If you have selected "Descreening with USM", the combined effect can be monitored.

The Studio versions have a scaleable dialogue window and some additional functions, e.g. automatic screen detection.



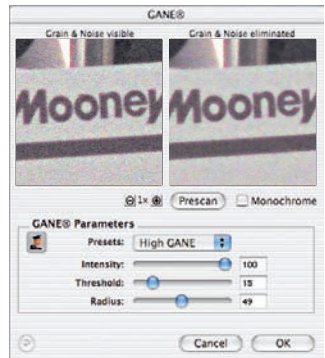
4.14 Grain- and Noise Removal (GANE)



The reduction of grain pattern and noise can be monitored in *SilverFast's* "Before-After-Preview" and enables a secure

judgement of the final results.

The intensity of the *GANE* filter can be easily controlled by the user with a drop-down list of presets. Additional sliders available in the expert mode enable a finer tuning to achieve the best possible result.



4.15 Dust and Scratch Removal (*SilverFastSRD*)

After starting *SilverFastSRD* click "Prescan" to generate a new preview with the current resolution set in order to show all artifacts.

The "Auto"-button tells *SilverFast* to find the best presets possible. The settings found can be optimised further.

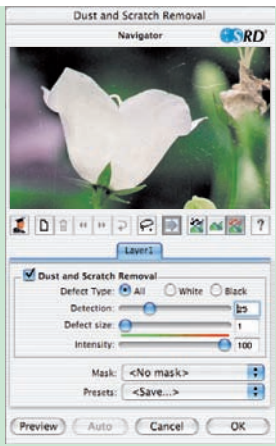
At first select "Defect Type" and switch to "artifacts highlighted"-mode. All artifacts found will be highlighted in red colour.

You can now correct the auto settings found with the sliders "Detection" and "Defect Size". You should leave "Intensity" for the time being on "100"!

With the slider "Intensity" reduce the number of details recognized which are not artifacts (Value: < 100).



Check the overall results by selecting other image areas with the Navigator and switching the monitor modes. In order to eliminate large artifacts or scratches only in certain areas of the image, use the mask function. For complex artefacts working with “levels” is recommended. Clicking “OK” will apply the parameters set and the dialogue will be closed.



4.16 Clone Tool



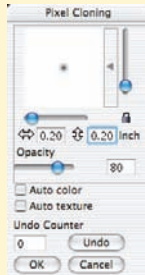
The powerful clone tool in the new *Studio* versions now allows complete retouching of images.

Clicking on the “Clone” button, left of the preview window opens the according dialog.

Size and shape of the clone tool may be adjusted in the upper part of this dialog by means of vertical and horizontal sliders.

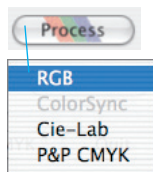
The processing of the picture takes place analogue to other image editing applications in three steps:

First, the image source is selected (click into the desired area of the image while keeping the “Alt” key pressed), then the target area is selected and then cloned by keeping the mouse key pressed. The marker of the source (circle with cross) follows the clone in a fixed distance.



4.17 Select the Colour Model

By pressing the “command” key and clicking the “Scan” button a pop-up allows you to select the output colour model (PC users click with the right mouse button on Scan RGB key): RGB, ColorSync (Win: “ICM”), Cie-Lab, P&P CMYK. After the selection is done, the process button changes accordingly. Default is “RGB”.



4.18 Processing

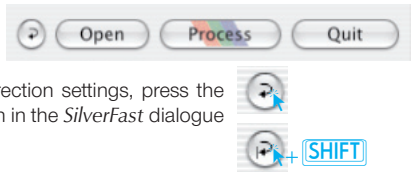
In order to start processing, click on “Process”-button.

Please read the *SilverFast* manual PDF for further options like batch processing etc.

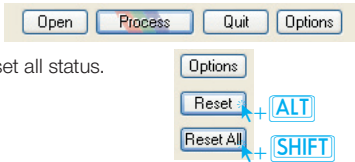


4.19 Reset / General Reset

Macintosh: In order to reset the correction within the active image frame, click the “Reset”-button in the *SilverFast* dialogue window. In order to reset all *SilverFast* correction settings, press the “Shift” key and click on the “Reset-All”-button in the *SilverFast* dialogue window.



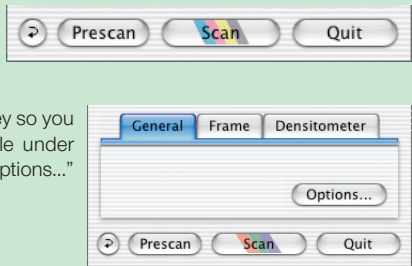
Windows: Hit and hold the “Alt” key in order to change the “Option”- button to reset status and hit and hold the “Shift” key in order to change it to reset all status.



4.20 Plug&Play CMYK

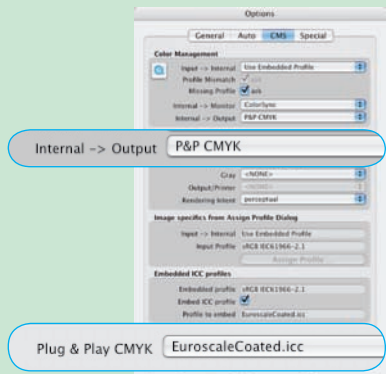
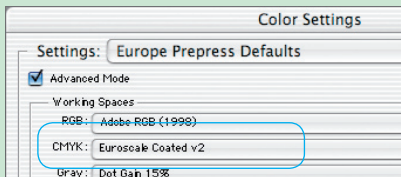
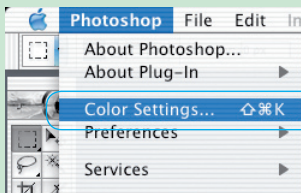
If you want to use “Plug&Play CMYK” output, make sure a colour separation profile e.g. “Eurostandard coated.icc” is loaded within *SilverFast*.

If the “Plug&Play CMYK” menu choice is grey so you cannot select it, choose a separation profile under the “Plug&Play CMYK” menu in the “Options...” dialogue window.



Attention!

To work accurately, select the same “Separation profiles” or “CMYK-ICC profiles” or “Output RGB profiles for RGB printers” in Photoshop and in *SilverFast*.



5. JobManager



An alternative to image correction is the option to pass these on to the *JobManager*.

This is recommended if time is to be saved and several images or even entire directories are to be optimized.

The *JobManager* is activated by clicking the respective button in the *VLT* toolbar. The selected images may then be passed on to the *JobManager* by the drag & drop function and will be processed there.

The selected images may directly be handed over to the *JobManager* from the *VLT* windows by drag & drop.

Even complete albums may be dragged into the *JobManager* window.

Unconverted RAW data images are converted *SilverFastDCPro...* when handed over to the *JobManager*. This is done in the background. Editing these images is only possible after complete conversion. In order to edit a particular image, please select its entry from the *JobManager*, and click on the „edit“- icon (pencil symbol).

6. Printing images

Two options for printing images are available.

6.1 Simple print function in the main dialogue

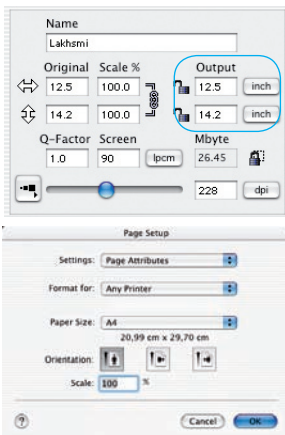
In *SilverFastDC...* it is possible to pass on the contents of the active image frame in the preview window directly to a connected printer. Hence it is unnecessary to save and reload the image in an imaging software for a quick printout.

The size of the image to be printed can be set in the scaling dialogue in the “Frames” palette.



The printing menu is opened by clicking the “Print”-button in the vertical button bar located left of the preview window. The settings in this menu are dependent on the printer driver and vary respectively. Enter your settings here and start the printout.

SilverFast remains open after commencing the printout. By this means it can be decided if the image is to be saved even after the actual printout.

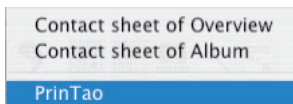


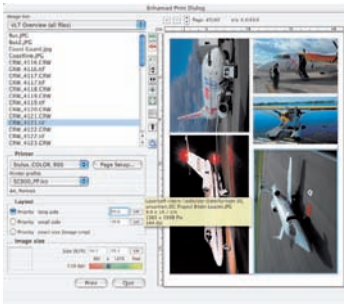
6.2 Extended print dialogue in the VLT



The print menu in the *VLT* contains not only the possibility to print contact sheets of albums or printing an overview, but also include the “advanced printing dialogue” in order to print out a selection of images from an album or from the overview.

By way of the popup menu “Image list” it can be chosen if all / a selection of images are to be listed from an active album / the active overview in the left part of the dialogue window is to be listed.





Images are to be selected from this list by the "Add" button to pass them on into the printout window. *SilverFast* will automatically try to place these images in an optimum manner on the print sheet. In case the printing area is not enough, *SilverFast* will ask if more printing sheets are to be used.













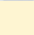
The size of the images that will be printed out is adjustable in the presets under the "Layout" menu.

The "Priority" determines if all images use the same long page, the same short page or the exact entered values on the printout.



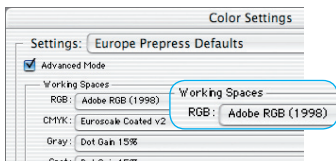
Naturally all single images may also be varied in size by clickdragging them manually in the printout window: Click-dragging within an image moves the entire image. Click-dragging an edge / a corner alters the image size (proportionally if the "Cut image"-button is deactivated, i.e. if it appears grey).

By means of the navigation buttons left of the print window, rotating, inverting etc. is possible:

-  **Add:** The images selected and marked are passed on to the printing window.
-  **Delete:** The selected images are removed from the printout.
-  **Stacking sequence upwards:** in the printing area marked pictures are shifted upward one level in the stacking sequence.
-  **Stacking sequence downwards:** in the printing area marked pictures are shifted downward one level in the stacking sequence.
-  **Rotate:** The selected image is rotated in 90° steps. The dot at the circle shows the orientation.
-  **Reflect vertically:** The active image is reflected vertically in the print window.
-  **Reflect horizontally:** The active image is reflected horizontally in the print window.
-  **Centre on page:** Places the image centrally in the printout.
-  **Adapt to page size:** The active image is proportionally adapted to the printing area.
-  **Cut image:** If this mode is activated the are of the image can be selected manually by click-dragging the mouse.
-  **Adding text to images:** By clicking the „T“ button the dialogue „Image text“ opens. With the aid of this extensive dialogue, the images may be fitted with individual or automatic texts.
-  **Saving, loading and exporting:** The page layout may be saved, re-loaded for future use and also be exported together with the images.
-  **QuickTime-Movies:** A short video that introduces *PrinTao*.

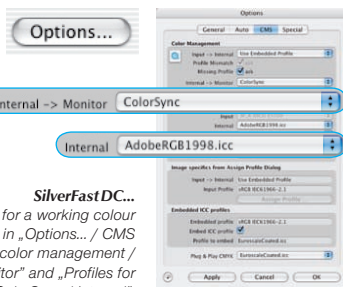
Colour management

Basic set up for correct matching of colours between Photoshop and *SilverFast* ideally, the viewed colour of the screen image should be the identical for *SilverFast* and Photoshop. However, that can only happen when an identical working color palette is used in both programs. If a self defined working color palette is used, it should first be copied into the system folder containing ColorSync profiles (Windows: ICM profiles). You will find detailed information on our web-site: www.silverfast.com and in our manual.



Photoshop

The set up of a working color palette is done in „file / color set up / RGB“. Here, for example „Adobe RGB (1998)“. A self defined working color palette can be saved in the dialogue.



SilverFast DC...

The set up for a working colour palette is done in „Options... / CMS (Win: ICM)“ at color management / Internal>Monitor“ and „Profiles for ColorSync / Internal“.

Calibrating your digital camera

For many digital cameras the optional *SilverFast* IT8 for calibrating and creating icc profiles can be purchased separately. Please contact *LaserSoft Imaging* for ordering and additional information.

The essential steps and settings for the calibration process are majorly automated and consolidated on purpose.

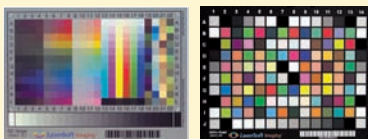
1 When to use calibration for digital cameras?

Calibration of a digital camera is more challenging than calibration of a scanner, which obtain constant light and scanning conditions, since the light and capturing conditions are subject of constant changes in reality. Because of this camera calibration is only of significance when applied to images photographed in a series of constant conditions. These constant conditions are most commonly realised in indoor / studio photography or a reproduction setting. The accomplished calibration and/or icc profile is solely valid for the exact same light and capturing conditions. Changing a lightsource, a lens, exposure distance etc adheres strictly in having to repeat the calibration process.

2 Capturing the calibration target

Capture the target perpendicular to the optical axis with as little reflections as possible. You can choose between two different calibration targets in the market, the genuine *LaserSoft Imaging DCPro-target* or the *ColorChecker*®SG from GretagMacbeth for capturing the calibration template.

The classic IT8 target is not suited for camera calibration since the patch layout does not display the colorspace available in reality. A camera target is specially designed to characterize the spectrum of colors available in reality.



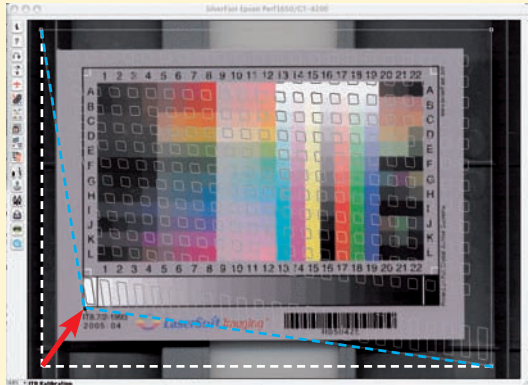
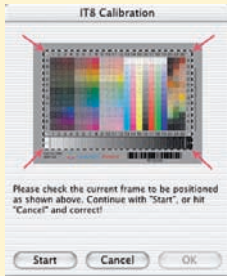
3 Open captured target in *SilverFastDC Pro...*

Load the generated image file of the calibration target on your computer. Open the image in the *SilverFast* main dialogue. Click once on the calibration button.



4 The window “IT8-calibration” pops up

A grid matrix is displayed in the preview window right away. Position the matrix corner by corner exactly on top of the targets frame.



5 Start the calibration

If the frame is correctly set up, the calibration can commence by clicking the “Start”-button. *SilverFast* will now search for the respective reference file for the chosen target.

6 Identifying the target and searching for the correct reference data file

***SilverFast* locates the reference data file on its own:** This usually happens very quickly and runs automatically; the target is identified by the barcode on its front. *SilverFast* then searches for the respective reference data file, and then launches the calibration.

***SilverFast* cannot find the reference data file:** Choose the reference file that matches the calibration target. Pay close attention to choose the correct file: for the transparency mode choose the transparency reference file; for reflective targets choose the reflective reference file. You may browse the collection of our reference files that match genuine *LaserSoft Imaging* targets online under:

<http://www.silverfast.com/it8calibration/en.html>

The reference data file contains the exact spectro-photometric values of your target.

7 Saving the ICC profile

After the calibration has been completed you will get the message “Calibration has been successful”. You’ll then have the option to save the result of the calibration as an ICC-profile for system-wide colour management. Name and location of the profile can be selected by the user.

8 Calibration is now active

The calibration button is now coloured and no longer grey.

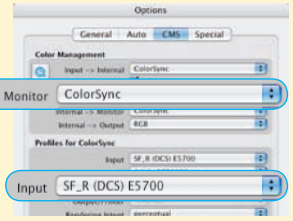


Attention!

For a subsequent activation of the calibration, please choose the following color management settings: Choose the option “ColorSync” (Windows “ICM”) in the “Input->internal” menu.

After this, choose the correct calibration profile.

After clicking the “OK” box of the CMS dialogue, the IT8 calibration is activated.



Options*

Prior to the optimization process, please use the “Options...”-dialogue to enter important presets. These presets will then be automatically applied to new frames.

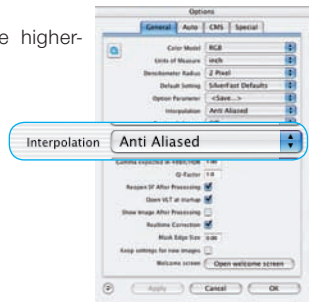
***Attention!** The preset dialogues are different, depending on the used version of *SilverFastDC...*, and some functions may be limited to specific imaging programs.

We will only be discussing the most important options in this guide. A complete description of all available options can be found in the main *SilverFast* manual.

General defaults

• Interpolation

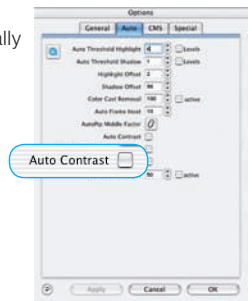
Switching between standard interpolation and the higher-order antialiasing interpolation.



Auto defaults*

• Auto Contrast

The best contrast setting of the picture viewed is automatically chosen upon activation.



CMS (Colour management) defaults*

Colour Management

- **Input > Internal**

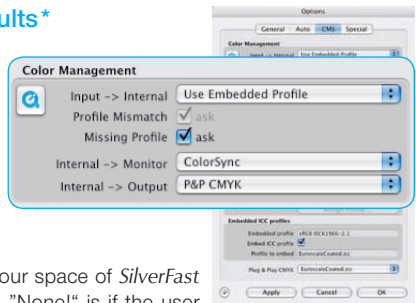
The preferred colour model for correction of colours may be selected here. Available choices are: "Use embedded profile", "None" and "ColorSync" (Win: "ICM").

- **Internal > Monitor**

Here the matching from the internal colour space of *SilverFast* to the current monitor is being defined. "None!" is if the user does not want any matching. "Automatic" is for Photoshop. (Please check the internal ICC profile set in *SilverFast* should be the same as the one allocated in Photoshop's internal colour space).

- **Internal > Output**

The preferred system for defining the output colour space generation can be chosen here. Select "RGB" for no output matching. "ColorSync" (Win: "ICM") if you want ColorSync (Win: "ICM") to do the output matching. "Cie-LAB" if you want to generate device independent colour space. "P&P CMYK" for *SilverFast's* own powerful separation to CMYK with Photoshop matching.



Profiles for ColorSync / ICM

- **Input**

ICC profile of the input device. E.g. digital camera.

- **Internal**

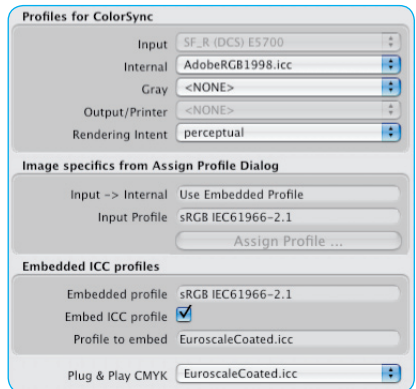
ICC profile for the internal colour space.

- **Output / Printer**

ICC profile for the printer.

- **Embed ICC profile**

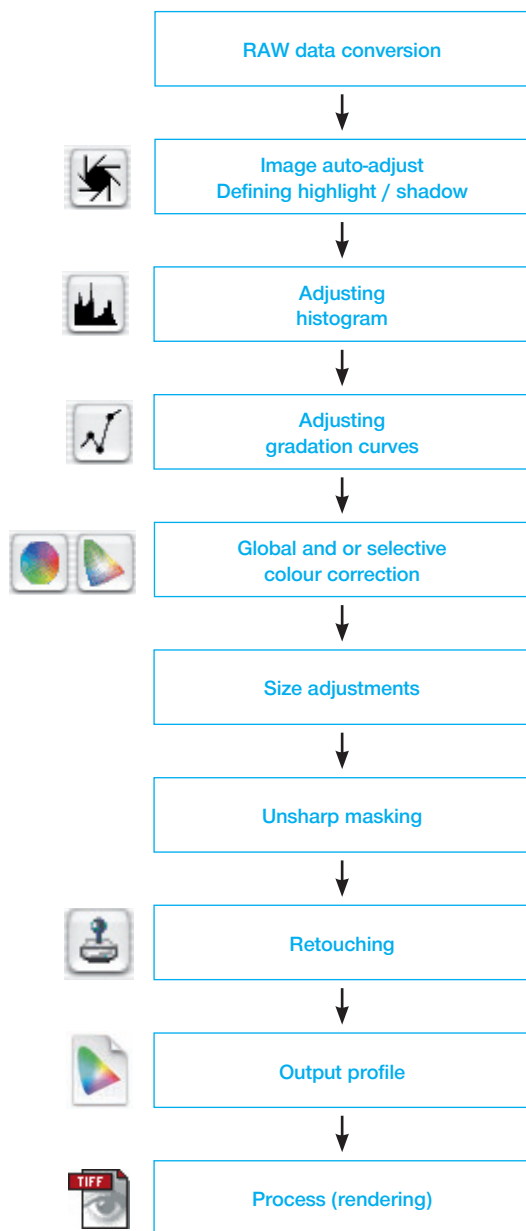
This option enables the user to pass the image data to an application which would do automatic matching with the embedded profile. When a TIFF-file is generated from *SilverFast* the ICC-profile is embedded into the TIFF data.



Plug&Play CMYK

The ICC-profile Plug&Play CMYK separation is chosen here.

Workflow of optimising images



The concept of optimising images

In order to obtain good results in image optimization, the proper order of procedure is extremely important.

1. RAW conversion

As a background process of the VLT or while passing on the image from the VLT into SilverFast's main dialogue.



2. Basic choice of shadow/highlight point

Either manually in the histogram dialogue, or by using the highlight/shadow tool (shown)

4. Global / Selective Colour Correction



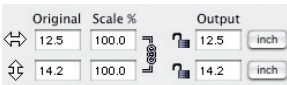
If necessary you change the over all colour with the global colour correction or individual colours with the selective colour correction.



3. Optimising gradation



Adjust the gradation curve by either dragging the curve or adjusting the sliders, as necessary.



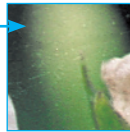
5. Size adjustment and scaling

Select input- and output size and horizontal/vertical scaling.



6. USM

Set the correct parameters for unsharp masking, depending on desired amount of sharpening, and file size.



7. Retouching

Reduce dust and scratches with the clone tool and the functions of SilverFast SRD.



RGB



LAB



CMYK

8. Output in RGB, Lab or CMYK mode

When using CMYK, please make sure to select the desired separation table inside the "Options.../CMS"- dialogue.

9. Process



Keystrokes in SilverFastDC...

Action	Macintosh	Windows
Description of keyboard shortcuts and their respective counterparts		
Command	Command-/Apple-Key	-
Alt	Option-/Alt-Key	Alt-Key
Shift	Shift-Key	Shift-Key
Ctrl	Control-/Ctrl-Key	Control-/Ctrl-Key
Return	Return-/Enter-Key	Return-/Enter-Key
Esc	Escape-/Esc-Key	Escape-/Esc-Key

ImagePilot

Apply / Execute current tool	Return	Return
Scroll / Next action	Up and Down arrow	Up and Down arrow

Preview, process

Stop preview / stop process	Command +Period	Ctrl+Period
Switch to other colour space	Ctrl+Click on Process-button	Right mouse button+Click on Process-button
Zoom	Ctrl+Click&Drag	Ctrl+Click&Drag

Image frames

Duplicate frame	Alt+Click&Drag	Alt+Click&Drag
Entire Window in one frame	Command+A	Ctrl+A
Delete frame (extended keyboard)	Delete	Delete
Delete frame (normal keyboard)	Alt+Backspace	Delete
Frame reset	Reset-button	Reset-button

Auto-adjust

Resetting auto-adjust	Alt+click on Auto-adjust button	Alt+Click on Auto-adjust button
-----------------------	------------------------------------	------------------------------------

Highlight / shadow / midtone tool (HSM-tool)

Set highlight	Click on white triangle of HSM-tool
Set midtone	Click on pipette of HSM-tool
Set shadow	Click on black triangle of HSM-tool

Multiple attempts with pipette

Hold down pipette for multiple attempts (only highlight, shadow)	hold down Alt	hold down Alt
Reset highlight / shadow	Alt+Pipette of HSM-tool	
Display brightest point	F6	F6
Display darkest point	F5	F5

Histogram

Show result histogram	Alt in the histogram dialogue	Alt in the histogram dialogue
-----------------------	-------------------------------	-------------------------------

Selective colour correction

Select all colours	Command+A	Ctrl+A
Select additional colour	Shift+Click into prescan	Shift+Click into prescan
Select additional colour column	Shift+Click on LED below column	Shift+Click on LED below column
Show inactive mask area (dialogue must be closed)	F7	F7

Action	Macintosh	Windows
Reset		
Reset all parameters	Shift+Click on Reset-button	Shift+Click on Reset-button
Frame reset	Alt+Click on Reset-button	Alt+Click on Reset-button
Undo/Redo last operation	Command+Z	Ctrl+Z

Opening a dialogue window

Zoom in preview	Command+1	Ctrl+Alt+1
Image auto-adjust	Command+2	Ctrl+Alt+2
Histogram dialogue	Command+3	Ctrl+Alt+3
Gradation dialogue	Command+4	Ctrl+Alt+4
Global colour correction	Command+5	Ctrl+Alt+5
Selective colour correction	Command+6	Ctrl+Alt+6
Expert dialogue	Command+8	Ctrl+Alt+7
Leave dialogue/Leave SilverFast	ESC or Command+Period	ESC or Ctrl+Period
Process image	Return/Enter	Return/Enter

Main dialogue

Undo/Redo last action	Command+Z	Ctrl+Z
-----------------------------	-----------------	--------

Masks in SilverFastSRD

Hide mask frame	Ctrl	Ctrl
Shade inactive mask area	Alt+ Ctrl	Alt+Ctrl
Reduce mask	Alt	Alt
Extend mask	Shift	Shift

JobManager

Select all job entry	Command+A	Ctrl+A
----------------------------	-----------------	--------

VLT (virtual light table)

Context menu in album and overview	Ctrl+Click	Right mouse
Preview mode, full screen,	Command+Shift+F	Ctrl+Shift+F
fit to screen		
Display EXIF infos	Command+I	Ctrl+I
Album, mark all images	Command+A	Ctrl+A
Album, delete image	Command+backspace	Ctrl+backspace

PrinTao (extended printing dialogue)

Crop opposing edges / corners	Shift+Click&Drag	Shift+Click&Drag
simultaneously		

SilverFast Launcher

Terminate	Command+Q	Ctrl+
-----------------	-----------------	-------

LaserSoft Imaging AG
Luisenweg 6-8
24105 Kiel • Germany
Tel.: +49 (0) 431/5 60 09-0
Fax: +49 (0) 431/5 60 09-96
E-Mail: Info@SilverFast.de
www.SilverFast.de

LaserSoft Imaging, Inc.
3212-B Gulf Gate Drive
Sarasota, FL 34231, USA
Fax: (+1) 941-925-9417
E-Mail: Info@SilverFast.com
www.SilverFast.com

SilverFast® und LaserSoft Imaging™ sind die eingetragenen Warenzeichen der LaserSoft Imaging AG, Deutschland. Alle erwähnten Warenzeichen sind die geschützten Warenzeichen der jeweiligen Inhaber.

SilverFast® and LaserSoft Imaging™ are registered trademarks of LaserSoft Imaging AG, Germany. All mentioned trademarks are the protected trademarks of the respective owners.

SilverFast® et LaserSoft Imaging™ sont des marques déposées de LaserSoft Imaging AG, Allemagne. Toutes les marques mentionnées sont les marques protégées des propriétaires respectifs.

SilverFast® y LaserSoft Imaging™ son marcas registradas de LaserSoft Imaging AG, Alemania. Todas las marcas mencionadas son marcas protegidas de sus respectivos propietarios.

SilverFast® e LaserSoft Imaging™ sono i marchi registrati della LaserSoft Imaging AG, Germania. Tutti i marchi che qui compaiono sono marchi protetti dei rispettivi proprietari.

SilverFast® e LaserSoft Imaging™ são marcas registradas da LaserSoft Imaging AG, Alemanha. Todas as marcas mencionadas são marcas protegidas dos respectivos proprietários.



E, D, F

12-2008

LaserSoft Imaging®