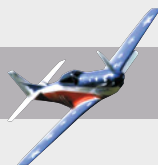


SilverFast®

SilverFast X-Ray English



LaserSoft Imaging®



SilverFast® Software-License Agreement

Do not open the software package and do not use the SilverFast® software until you have read and agreed to the terms and conditions of this Software License Agreement. If you do not agree with these terms and conditions, immediately return the unopened software sealed in its original packaging to LaserSoft Imaging AG.

SilverFast® is a software package comprising software and supporting documentation for a method of generating an image file for the subsequent production of color separations or print files. This is a license and not a purchase agreement. LaserSoft Imaging AG has developed SilverFast® and is the owner of all rights in the software and the copy thereof.

1. Copyright

(1) The licensee acknowledges that LaserSoft Imaging AG is the owner of the copyright in the software both with regard to the source and the object code.

(2) The documentation and the software are copyrighted. Unauthorized use, including the use of all visual and video material, gives rise to claims for compensatory damages.

2. License

(1) LaserSoft Imaging AG grants the licensee an exclusive and non-transferable license to use the software object code of SilverFast and the supporting documentation supplied for his or her own personal use. The term of the license is limited to the term of this Software License Agreement.

(2) With this license the licensee is authorized to use the licensed product on a single personal computer at a time. In order to use the licensed product on multiple processors and/or at different places at the same time, several licenses are required.

(3) The licensee is not allowed to copy the software in whole or in part except for the purpose of making a backup copy for personal use. The same applies to the documentation.

(4) The software contains confidential information. With this license the licensee may not alter, adjust, decompile, disassemble the software nor in any other way try to find out the source code.

(5) The licensee may not rent, lease, sublicense or lend the software to third parties. Passing on of the software in any case requires the written approval of LaserSoft Imaging AG. LaserSoft Imaging AG will grant approval provided (a) the licensee presents a written declaration of the new user in which the new user undertakes to adhere to the license agreement concluded for the software and (b) the licensee does not retain any (backup) copies and warrants to LaserSoft Imaging AG in writing that the licensee passed on original copies of the software to the third party and deleted all copies the licensee made.

3. Effective Date and Term of the License

(1) This license takes effect on the day the software package is opened. It remains in force until the day LaserSoft Imaging AG or the licensee terminates the License Agreement.

(2) This License Agreement may be terminated as follows:

(a) LaserSoft Imaging AG may terminate this license upon written notice to the licensee if the licensee is in breach of this Agreement or parts thereof.

(b) The licensee may terminate this license upon written notice to LaserSoft Imaging AG under the terms and conditions of No. 4, if he/she returns the opened software package to LaserSoft Imaging AG and deletes the copy on his/her PC and the copy he/she may have made for backup purposes.

4. Warranty

(1) The software is provided "as is". LaserSoft Imaging AG does not warrant – neither expressly nor implied – the usability of the software for a particular purpose nor that the software meets the licensee's requirements. Although every development effort has been made to eliminate errors, LaserSoft Imaging AG does not warrant that the software is free of defects.

(2) The licensee shall examine the software for visible, major defects within 14 days. These defects must be notified to LaserSoft Imaging AG in writing. Hidden defects are to be notified in the same manner upon detection. Otherwise software and supporting documentation are deemed to be approved without reserve.

(3) In the event of major defects LaserSoft Imaging AG may at its discretion either deliver a new version to the licensee (replacement delivery) or rectify the defect within a reasonable period of time (rectification of defects). If LaserSoft Imaging AG does not succeed to allow contractual use of the software within this given period, the licensee has the option to request reduction of the price or to cancel the contract.

(4) Upon assertion of warranty claims the licensee is obliged to return the software together with the notice of receipt at the charge of LaserSoft Imaging AG.

5. Limitation of Liability

(1) LaserSoft Imaging AG assumes full liability for intent or gross negligence, for personal injury or death, under the stipulations of the German Product Liability Act (Produkthaftungsgesetz) as well as within the framework of a warranty granted by LaserSoft Imaging AG.

(2) In the event of a slightly negligent breach of an obligation which is essential in order to fulfill the contractual purpose (cardinal obligation) the liability of LaserSoft Imaging AG shall be limited to the amount of the damage foreseeable and typical for the kind of transaction in question.

(3) Any liability of LaserSoft Imaging AG beyond that is excluded. In particular LaserSoft Imaging AG shall not be liable for any initial defects provided the conditions of para 1 and 2 are not met.

(4) The limitation of liability stated above also applies to the personal liability of employees, representatives and bodies of LaserSoft Imaging AG.

6. Trademarks

SilverFast and other trademarks (including those of other companies) mentioned in the documentation are (registered) trademarks of LaserSoft Imaging AG or their respective owners. The use of these names, trademarks, logos, documentation, screenshots etc. requires approval by LaserSoft Imaging AG and/or the respective owners of the trademarks. Unauthorized use gives rise to claims for compensatory damages.

7. Ineffective Provisions

Should individual provisions of this Agreement, for any reason, be or become ineffective, or should a gap arise that needs to be filled, this shall not affect the remaining provisions of the Agreement. A provision that is closest in the scope of the legal possibilities of what the parties originally intended shall replace the ineffective provision or shall fill the gap, if necessary also retrospectively.

8. Amendments

Amendments to this Agreement shall be made in writing.

9. Applicable Law

This Agreement is governed by German law. Application of the United Nations Convention on Contracts for the International Sale of Goods (CISG) is hereby expressly excluded.

Content

SilverFast® Software-License Agreement	2
SilverFast Installation	5
Macintosh	5
Windows	6
Quickstart and Overview	7
1. Launching <i>SilverFast X-Ray</i>	7
2. Welcome Dialogue	7
3. Serialize and Register <i>SilverFast X-Ray</i>	8
4. „X-Ray“-Mode of <i>SilverFast X-Ray</i> Main Dialogue	9
5. Workflow in “X-Ray” Mode	10
6. Would you like to scan other image types or have even more control?	11
7. <i>SilverFast X-Ray</i> ’s Main Dialogue in “Standard” Mode	12
8. Workflow in the “Standard” Mode	13

Registration

Please take a minute to register this software. It will enable you to download free updates for a limited time, and to contact technical support by e-mail or fax. You can register on-line at

<http://www.silverfast.com/reg/en.html>

Your personal information will be kept confidential.

Introduction

Dear *SilverFast* X-Ray User,

LaserSoft Imaging is proud to present its latest and most important contribution to the medical community. *SilverFast* X-Ray was developed to meet the specific challenges and demands of capturing the highest amount of detail ever thought possible from X-ray film.

With the advent of low priced, high quality flatbed scanners and the new *SilverFast* X-Ray, the medical industry can now include professional level image processing as a cost effective, efficient tool.

The user-friendly interface and intelligent auto-adjust feature makes it easy for anyone in the office to capture, optimize and archive images from x-ray film. The basic interface can be switched to a standard mode, presenting even more professional level editing tools for further enhancement when needed.

I am convinced that *SilverFast* X-Ray represents a milestone in medical imaging, parallel to what *SilverFast* has achieved in the publishing and prepress industry since its inception.

Yours,

Karl-Heinz Zahorsky
President and CEO
LaserSoft Imaging AG

Kiel, March 2010



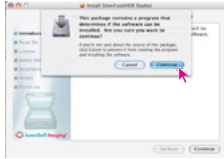
SilverFast Installation

Macintosh

The new Apple installer is now used for Macintosh computers. All *SilverFast* installers were shipped as “.mpkg” file. A double click onto the installer icon launches the installation process. The entire installation is completely guided and follows the current Apple® Macintosh® standard.



- Double click the installer icon.
- Click „Continue” to run the installation process.
- Please read the latest informations about the installation process and SilverFast.



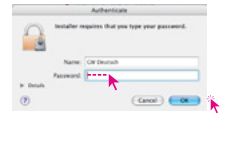
- Please read and accept the terms of use and license agreement.



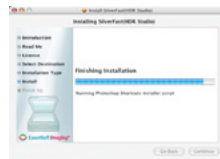
- Select the destination volume.



- Start installation procedure.
Security check
You have to be logged in to your computer as root or administrator to run an installation successfully.



- Installation finished.



Windows

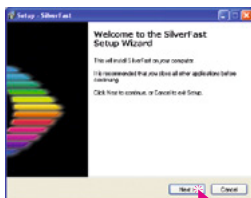
The Windows installation is launched by clicking the Installer symbol.

The actual installation will prompt you if any action is necessary.

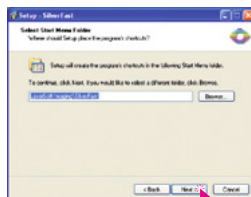
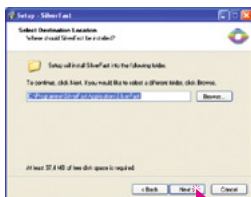
- Launch Installation by double click



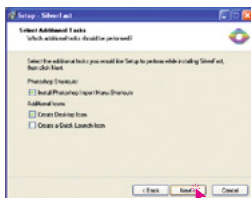
- "Continue" if the Installation is to be started
- Read and accept the license agreement and click "Continue"



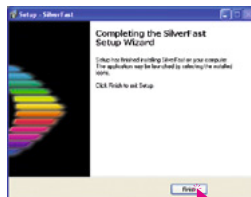
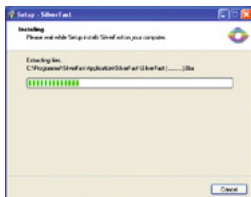
- The installation path can be freely selected
- The installation can be added to the Start Menu



- Additional installations "Continue" or choose
- Summary "Continue"



- Installation is running
- Complete installation



Quickstart and Overview

1. Launching SilverFast X-Ray

There are 3 three ways to launch *SilverFast X-Ray*:

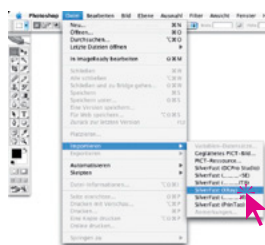
Launch by means of the *SFLauncher*:

This will start the Standalone application without the need of any additional programs. Double click the launcher. Select the desired *SilverFast X-Ray* version and click "Start". *SilverFast X-Ray* will open.



Launch as TWAIN: First launch the program that contains the TWAIN interface with which you want to use *SilverFast X-Ray*. Select "*SilverFast X-Ray*" under the "Scanner" option.

Launch as an Adobe Photoshop® Plug-In®: Start Photoshop and select your scanner "*SilverFast...*" under "Import" under the "File"-menu (Windows: "File"-menu).



2. Welcome Dialogue

In the new *SilverFast* versions, a new active "Welcome screen" is displayed after launch.

By means of the available buttons, the user may directly access the respective functions of *SilverFast*, and may also obtain information on current developments, documentation, hints and help. For fully using these functions, an internet connection has to be present.



QuickTime movies and documentation: A link to the web page containing all movies.

Functions and features: A link to the highlights of *SilverFast* within the *LaserSoft Imaging* web site.

On-line hints, tricks and advice: A direct link to the *SilverFast* user forum that fits the used *SilverFast* version.

Upgrade information on current version: A small applet is launched which checks for available updates or the currently used version. If so, the respective window of the *LaserSoft Imaging* web site is opened. Here the latest software version may be downloaded.

Close dialogue: Close the window and continues the launch process of *SilverFast*.

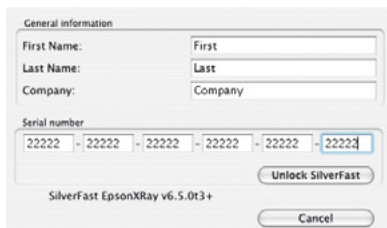
3. Serialize and Register *SilverFastX-Ray*

When launching *SilverFastX-Ray* for the first time, the serialization dialogue will appear. Enter your name, company and the *SilverFastX-Ray* serial number. Please ensure that you are logged into the PC/Mac with administrator rights.

The serial number is a 30 digit code, consisting of 6 groups with 5 digits each.

This code consists of numbers between 2 and 9 (no ones and no zeros), and all letters between A and Z – except the letters “i” and “o”.

Click “Unlock SilverFast” once you have entered all data.



General information

First Name:

Last Name:

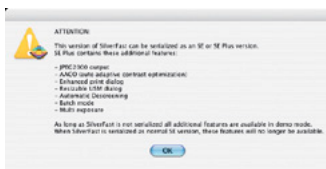
Company:

Serial number

- - - - -

SilverFast EpsonXRay v6.5.0t3+

When selecting “Demo mode”, *SilverFastX-Ray* is not activated, but the Demo Mode and Test Mode are activated; all functions of *SilverFastX-Ray* are available, but a watermark or a *LaserSoft Imaging* logo are inserted into the final scan. Additionally, a notification of optionally available features is displayed



Please register your version of *SilverFast*; only then will you receive support and have access to the latest versions using the Online-Update. Clicking the “i” button, and then hitting the “Register” button will then launch the registration procedure.



SilverFast Registration

Register SilverFast to obtain access to our online updates and support.

Serial Number: Z56NC-A2CJ3-C25N2-2A382-492N9-7ONCR

Company:

Title: *First Name: *Last Name:

*Address:

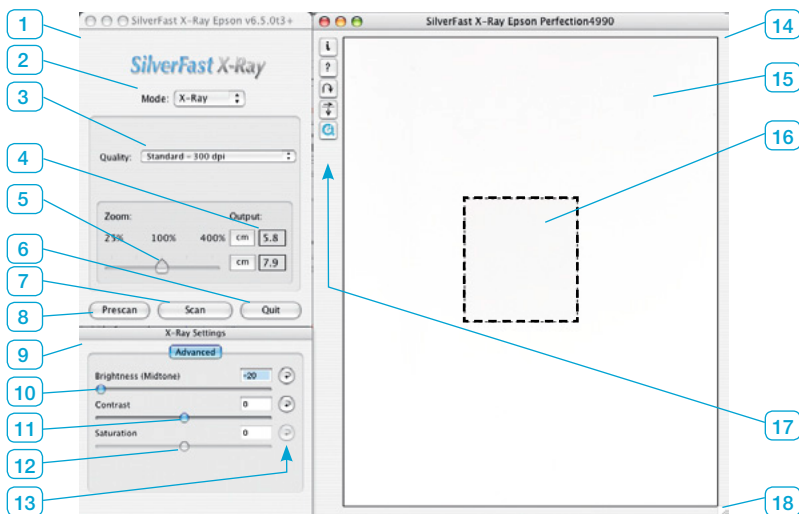
*City: State:

*Zip: *Country: *Phone: Fax:

*Email Address:

* indicates required field

4. „X-Ray“-Mode of *SilverFast X-Ray* Main Dialogue



- | | |
|--|---|
| <p>1 Main window</p> <p>2 X-Ray / Standard
Toggle switch</p> <p>3 Output quality (output resolution)</p> <p>4 Output size (horizontal / vertical)</p> <p>5 Slider for output size</p> <p>6 Quit SilverFast X-Ray</p> <p>7 Launch final scan</p> <p>8 Launch prescan</p> <p>9 Image settings</p> <p>10 Slider for mid-tone brightness</p> <p>11 Slider for contrast</p> <p>12 Slider for saturation
Applicable only to colour scans</p> <p>13 Reset buttons</p> <p>14 Prescan window</p> <p>15 Prescan area – scan window
Shows the scanning area of the connected scanner</p> | <p>16 Active scan frame
Contains the area to be scanned</p> <p>17 Special function buttons
i = Info button about current version
? = Help button, launches PDF
Rotate button
Mirror buttons
QuickTime button – Launches QuickTime movies.</p> <p>18 Window scaling button</p> |
|--|---|

5. Workflow in “X-Ray” Mode

- **Preparing scanner**

Place X-Rays on scanner bed – aligned to the sides wherever possible.

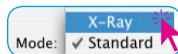
ATTENTION: Do not cover uppermost part of scan-bed as this is used for calibration!

- **Launch *SilverFast X-Ray***



- **Activate X-Ray mode**

X-Ray mode is set by default. In case *SilverFast* opens in “Standard” mode, simply toggle to “X-Ray” mode.



- **Make a prescan**

Click on the “Prescan” button.



- **Position scan frame**

A frame must now be drawn around the X-Ray in the large preview window.

This is done by manually click-dragging the edges of the active scan frame.

- **Check orientation**

If needed the scan frame can be rotated or mirrored by means of the respective buttons. Rotating is done clockwise in 90 degree increments (keeping the “ALT” key pressed while clicking will rotate counter clockwise).



- **X-Ray optimization**

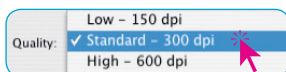
SilverFast X-Ray will automatically enhance the X-Ray.

- **Manually correcting the X-Ray**

The X-Ray can be further adjusted by moving the sliders in the Image settings dialogue.

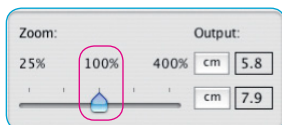
- **Set output resolution**

Under the quality selector, the output resolution can be selected. 300 dpi is default and in most cases absolutely sufficient for X-Rays.



- **Check output size**

The Zoom slider controls the size of the final scan. In general, the default setting of 100% should not be changed. The output size is displayed in the boxed on the right. They may be toggled from inch to cm.



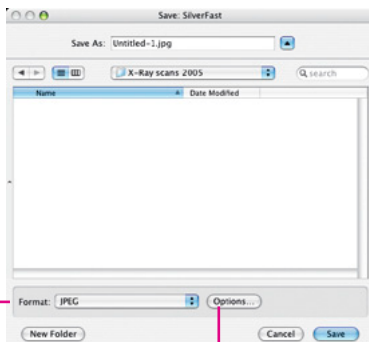
- **Finalize X-Ray settings**

By clicking the “Scan” button, the selected settings will be processed.

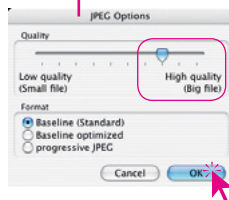


- **File name, format and location**

Finally, select a filename, the format to be saved in and the place at which the X-Ray is to be saved.



The default setting “JPEG” on quality setting “8” should be adequate for most X-Rays and will only use a moderate amount of disk space.



- **Launch final scan**

By clicking on “Save” the final scan will be launched.



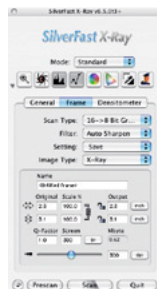
6. Would you like to scan other image types or have even more control?

Both are possible and easy. *SilverFast X-Ray* also contains the “standard” *SilverFast* mode.

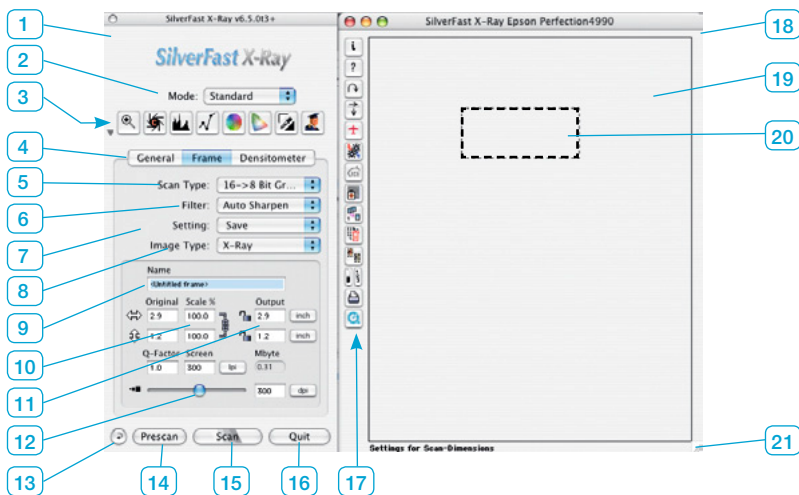
The X-Ray version is a highly specialized and automated version, whereas the standard version offers full control over all additional and professional features of *SilverFast*.

A complete overview on *SilverFast* can be found in the *SilverFast* manual, which is available in a PDF format on *LaserSoft Imaging*’s homepage.

The numerous QuickTime movies embedded within the *SilverFast* dialogs offer a quick and easy introduction to *SilverFast*’s vast possibilities and tools.



7. SilverFast X-Ray's Main Dialogue in "Standard" Mode



1 Main dialogue window

2 X-Ray / Standard
Toggle switch

3 Tools palette

4 Main dialogue's palette
General, Frame, Densitometer

5 Scan type (bit depth)

6 Filters
Sharpening, de-screening, GANE

7 Save/load image settings

8 Image type (automatic settings)

9 File name

10 Scaling in percent

11 Output size (horizontal/vertical)

12 Output quality (output resolution)

13 Reset, reset all

14 Launch prescan

15 Launch final scan

16 Quit SilverFast

17 Special tools palette:

i button – Information about current version
? button – Help files in PDF format
Rotate button
Mirror buttons
ScanPilot – Partially automatic user help
JobManager – Professional batch processing
ICE (depending on scanner type)
SRD – smart removal of defects / scratch and dust removal
Multisampling – minimization of noise
Delete Scan frame
Auto Frame detection
Highlight / shadow point / frame number
Print current scan frame
QuickTime movie button

18 Prescan window

19 Prescan area - scan window

Shows the scanning area of the connected scanner

20 Active scan frame

Contains area to be scanned

21 Window scaling button

8. Workflow in the “Standard” Mode

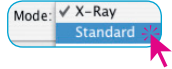
- **Prepare scanner**

Place images on the scanner flatbed – whenever possible aligned to the sides.

- **Launch *SilverFast X-Ray***

- **Activate “Standard” mode**

The “X-Ray” mode is set by default. To switch to “Standard” mode, simply select “Standard” from the menu.

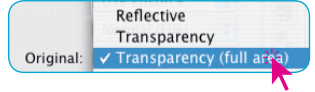


- **Define image type**

The main dialogue on the “General” palette offers a selection under the point “Original”:

“Reflective” – for photos, magazines or any other reflective image.

“Transparency” and “Transparency (Full area) for transparent images such as films or slides. Usually “Transparency (Full area) should be selected for transparencies.

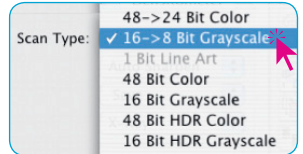


- **Select scan type**

Located on the main dialogue under the “Frame” settings, the field “Scan type” is used to choose how the image is to be processed.

“48->24 bit color” for normal colour scans of images or photos.

“16 -> 8 bit grayscale” for normal grayscale scans and for X-Rays.



- **Perform a prescan**

By clicking on the “Prescan” button, the scanner launches a preview of the image.



- **Position scan frame**

By click-dragging the edges of any frame it can be moved into any position on the preview or it can be enlarged or made smaller. A new frame can be draw by clicking anywhere outside the scan frame and moving the mouse while keeping the mouse button pressed.

Alternatively, the button “Auto Frames” can be used to detect images on the flatbed.



- **Zoom**

The magnifying glass allows a zoom into the active scan frame. The scanner performs a new prescan if the magnifier is clicked. Note: The smaller the scan frame, the bigger the zoom factor.

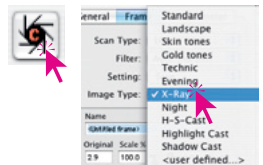


- **Check orientation**

If needed the scan frame can be rotated or mirrored by means of the respective buttons. Rotating is done clockwise in 90 degree increments (keeping the “ALT” key pressed while clicking will rotate counter clockwise).

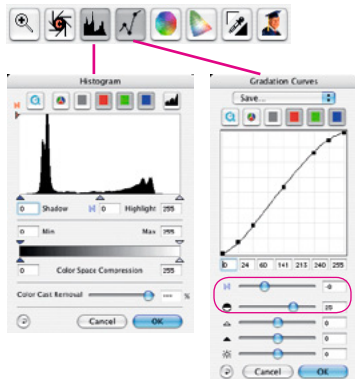
- **Activate image automatic**

By clicking the auto-adjust symbol in the upper right toolbar, the automatic is activated. Different auto-settings can be selected from the popup menu in the “Image type” field.



- **Manual corrections of auto adjust in the “Image settings” window**

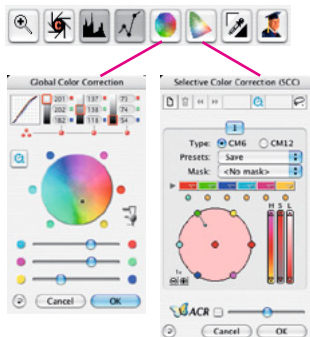
If necessary, the extensive dialogues “Histogram” and “Gradation” can be used to alter any image settings in real time. All changes are made visible on the prescan immediately.



- **Colour corrections**

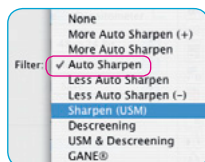
Colour casts can easily be removed from an image by means of the “Global correction”.

If individual colours are to be corrected the “Selective colour correction” should be chosen.



- **Choose filter**

The quality of digital scans can be improved by lightly sharpening them. For this, a selection of filters can be found in the pop-up menu under the “Filter” field.

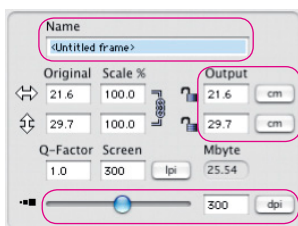


- **File name, image size and resolution**

A name for the scan frame may now be selected.

The “Output” field resembles the actual size of the final scan.

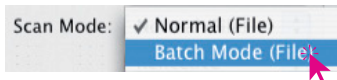
The slider or the respective input field allows the setting of the output resolution.



- **Batch processing**

The “Standard” mode offers the possibility to draw several scan frames and scan them off in a single operation. To do this, each prescan window must be optimized individually within an individual scan frame.

After all frames have been optimized, select “Batch mode” in the main dialogue “Scan mode” in the “general” palette.



- **Finalize scan settings**

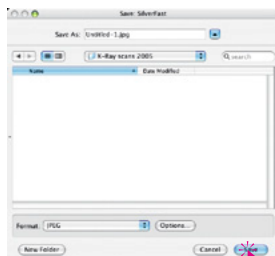
By clicking “Scan” all settings are applied and the save image dialogue is opened.

- **File format and location**

Finally, select a file name, the format to be saved in and the place at which the image is to be saved.

- **Launch final scan**

By clicking “Save” the scanner launches the final scan.



LaserSoft Imaging AG
Luisenweg 6-8
24105 Kiel • Germany
Tel.: +49(0)43-1 560 09-0
Fax: +49(0)431-560 09-96
E-Mail: Info@SilverFast.de
www.SilverFast.de

LaserSoft Imaging, Inc.
625 Freeling Drive
Sarasota, FL 34242, USA
Fax: (+1) 941-3 12-0608
E-Mail: Info@SilverFast.com
www.SilverFast.com



English

11-2010

SilverFast® und LaserSoft Imaging™ sind die eingetragenen Warenzeichen der LaserSoft Imaging AG, Deutschland. Alle erwähnten Warenzeichen sind die geschützten Warenzeichen der jeweiligen Inhaber.

SilverFast® and LaserSoft Imaging™ are registered trademarks of LaserSoft Imaging AG, Germany. All mentioned trademarks are the protected trademarks of the respective owners.

SilverFast® et LaserSoft Imaging™ sont des marques déposées de LaserSoft Imaging AG, Allemagne. Toutes les marques mentionnées sont les marques protégées des propriétaires respectifs.

SilverFast® y LaserSoft Imaging™ son marcas registradas de LaserSoft Imaging AG, Alemania. Todas las marcas mencionadas son marcas protegidas de sus respectivos propietarios.

SilverFast® e LaserSoft Imaging™ sono i marchi registrati della LaserSoft Imaging AG, Germania. Tutti i marchi che qui compaiono sono marchi protetti dei rispettivi proprietari.

SilverFast® e LaserSoft Imaging™ são marcas registradas da LaserSoft Imaging AG, Alemanha. Todas as marcas mencionadas são marcas protegidas dos respectivos proprietários.



LaserSoft Imaging®