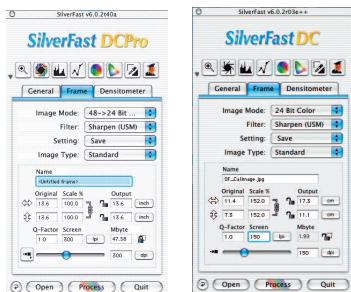


SilverFast DC, -DCPro



SilverFast DCPro and *SilverFast DC* have their main functions specialized for pictures that were generated by digital cameras. *DCPro* and *DC* are able to read some of the most common camera-formats. *DCPro* primarily used with professional RAW data formats, whereas *DC* is more commonly used with TIFF and JPEG formats. An overview of the formats and the version of *SilverFast* that can read the specific formats can be found in Section 6.9 “Reading different file formats” of the manual and also here:

file format	channels, data depth (suffix)	SilverFast Ai	SilverFast SE	SilverFast DCPro	SilverFast DC	SilverFast DC SE	SilverFast HDR	SilverFast PhotoCD
TIFF	K, 1 bit line-art (.tif)	-	-	-	-	-	-	-
	K, 8 bit Grayscale (.tif)	-	-	(L)	(L)	(L)	(L)	-
	HLSB, 24 bit colour (.tif)	-	-	(L)	(L)	(L)	(L)	-
	PCPR, 48 bit colour, unconnected (.tif)	-	-	(L)	-	-	(L)	-
	RGB, 48 bit colour, connected (.tif)	-	-	(L)	-	-	(L)	-
JPEG	CMYK, 32 bit colour (.tif)	-	-	-	-	-	-	-
	K, 8 bit Grayscale (.jpg)	-	-	(L)	(L)	(L)	(L)	-
	RGB, 24 bit colour (.jpg)	-	-	(L)	(L)	(L)	(L)	-
	HLSB, 48 bit colour, unconnected (.jpg)	-	-	(L)	-	-	(L)	-
	PCPR, 48 bit colour, connected (.jpg)	-	-	(L)	-	-	(L)	-
DCS	CMYK, 32 bit colour (.dcs)	-	-	-	-	-	-	-
	CMYK multiple files 48 bit grayscale + 1x 32 bit colour (.dcs)	-	-	-	-	-	-	-
EPS8	K, 8 bit grayscale	-	-	-	-	-	-	-
	CMYK, 32 bit colour	-	-	-	-	-	-	-
PSD	HLSB, 24 bit colour (.psd)	-	-	(L)	(L)	(L)	(L)	(L)
Kodak PhotoCD	PCPR, (.pcc)	-	-	(L)	-	-	-	-
NET (Bellini)	RGB, 32 bit colour (.net)	-	-	(L)	-	-	-	-
CRW (Canon)	HLSB, 12 bit colour (.crw)	-	-	(L)	-	-	-	-
CR2 (Kodak)	PCPR, 8-12 bit colour (.cr2, .tif)	-	-	(L)	-	-	-	-
DCR (Kodak)	RGB, 12 bit colour (.dcr)	-	-	(L)	-	-	-	-
RAW (Minolta)	HLSB, 8 bit colour (.raw)	-	-	(L)	-	-	-	-
RAF (Fujifilm)	PCPR, 8-12 bit colour (.raf)	-	-	(L)	-	-	-	-
ORF (Olympus)	RGB, 9-12 bit colour (.orf)	-	-	(L)	-	-	-	-
X3F (Sigma)	HLSB, 12 bit colour (.x3f)	-	-	(L)	-	-	-	-

The “virtual light table” called “VLT” is an excellent tool that combines the four most important jobs of digital imaging in one window:

- Viewing, getting an overview and searching
- Sort, look over and organizing
- Processing and optimizing of images
- Printing of contact sheets and single images

If the interaction of camera and computer functions properly, the images may be taken directly from the digital camera by the *VLT* for further processing.

When launching *SilverFastDC, -DCPro*, the *VLT* will open. By clicking these buttons, the user may switch between the *VLT* and the *SilverFast* main dialogue.



Working with RAW-Data in *SilverFast DCPro*



SilverFast DCPro is able to directly read the most common RAW-Data formats of professional digital cameras. Apart from the previously supported classical 48Bit RGB-Tiff format, the RAW-Data formats CRW (Canon), DCS (Kodak), MRW (Minolta), NEF (Nikon), ORF (Olympus), RAF (Fuji), and X3F (Sigma) are now supported.

System requirements

Working with RAW-Data implies working with large files. Subsequently, the system requirements are quite high.

- **System Requirements Macintosh**
MacOSX, 256 MB RAM, 150MB free disc space
- **System Requirements Windows**
CPU 1 GHz, 256 MB RAM, 150 MB free disc space

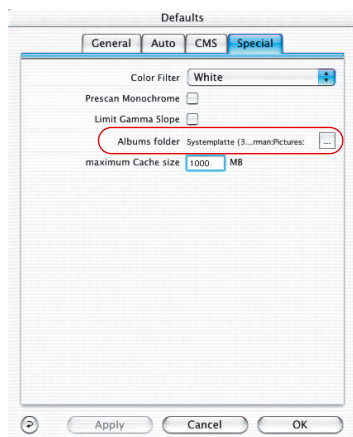
Presets and cache

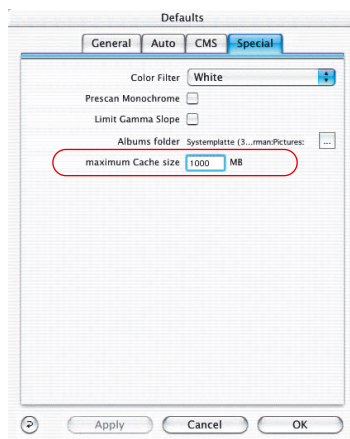
In order to ensure optimum usage of the computer system, some thoughts should be devoted to memory requirements and the expected file sizes.

Accordingly, 2 presets should be made in the Palette “General” / “Options” / “Special”

- **Setting the path for the Album folder**

Here, the user may generate and assign an individual directory for the saving of the *SilverFast DC* Albums.





- **Setting the cache size**

In order to convert large amounts of RAW-Data in the background, a respectively large cache memory size is needed.

The conversion of RAW-Data means that a RAW-Data file is converted into an uncompressed “48Bit RGB Tiff” format.

An example of a generous calculation of the expected memory assignment:

A digital camera with 6 Megapixels delivers a RAW-Data file of about 6 MB. Converted into 48Bit RGB this will mean a file size of almost 36 MB.

$6 \text{ MB (RAW)} \times 3 \text{ (RGB, 8 bit per channel)} \times 2 \text{ (RGB, 16 bit per channel)}$.

If, for example, 100 RAW-Data files with an average size of 6 MB are converted, the required cache size increases to around 3,6 GB. An adequately large hard drive is recommended.

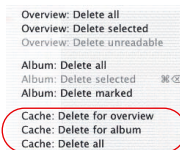
In case the capacity of the HDD is reached while converting, *SilverFast* halts and displays a corresponding message. The user then has the chance to alter the assigned cache size in the “Options” / “Special” dialog.

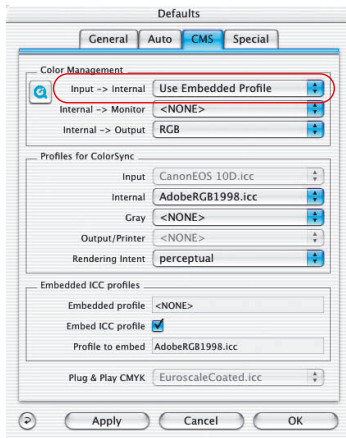
Naturally, *SilverFast* can continue without increasing the cache size. If the limit is reached and additional files are to be converted, *SilverFast* overwrites the cache of an older image. This happens analog to the cache memory as is done in Internet Browsers.

The older image thus loses its blue dot, and the new image will receive it after conversion.

The contents of the cache memory remain until the user actively deletes it.

The cache may be deleted directly by means of the PopUp Menu “Delete”.





• ICC profiles for your camera

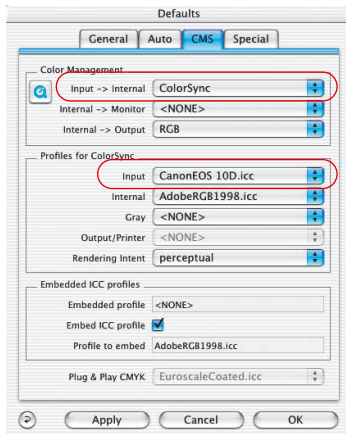
Special ICC Profiles are installed for a large number of digital cameras by *SilverFast*. Please check our webpage for a precise listing of all supported models.

Generally, the option "Use embedded Profile" should be chosen in the Presets-Dialog "Input > Internal".

When opening any image, *SilverFast DCP Pro* will try to determine the used Camera model by reading the EXIF data. If the Camera is recognised, and if *SilverFast* has installed a Profile for this Camera, the Profile and the Image are automatically combined correctly.

In case no Profile is found, no Profile will be selected. In this case, Color-mismatches may occur.

By means of the integrated IT8-Calibration, it is thus possible, to generate an ICC Profile for the respective Camera. This Profile is then to be chosen manually.



Manual selection of a Camera-Profile

The respective profile for your camera is chosen in the SilverFast dialog "General" / "Options" / "CMS" under the Input-Prompt "ColorSync Profiles" / "Input".

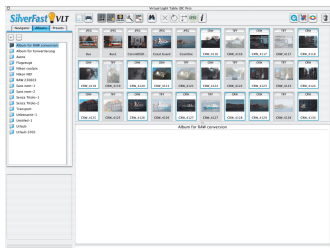
The Input-Prompt "Color-Management" / "Input > External" has to be set to "ColorSync" in order to use the profile.

In case your camera images seem to have general color mismatches, it may well be that no profile was chosen for the camera within *SilverFast*. Please check our webpage regularly under the "News" option; the release of new camera profiles is mentioned here.

Workflow for conversion of RAW-Data files

SilverFast DCP Pro allows a quick conversion of RAW-Data files in the background.

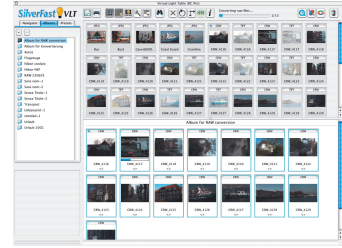
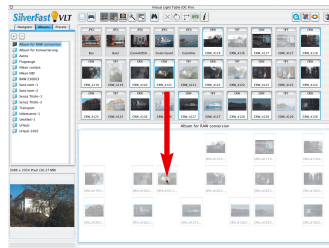
This is done by choosing the images to be converted in the overview of the VLT, and dragging them into an Album.



Left: First select the images that are to be converted

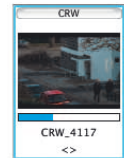
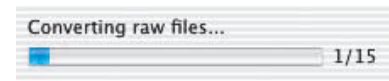
Middle: Drag them into an Album

Right: The conversion commences immediately

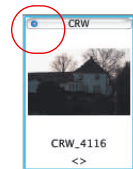


The conversion commences immediately. The status of the conversion may be seen in the status bar.

At the right of the progress bar, the number of already converted images and the overall number of images are displayed. In addition to this, a thumbnail of the current image, as well as another smaller progress bar are shown.



If a RAW-Data image has been converted, the thumbnails are marked with a small blue dot on the upper left corner of the thumbnail image.



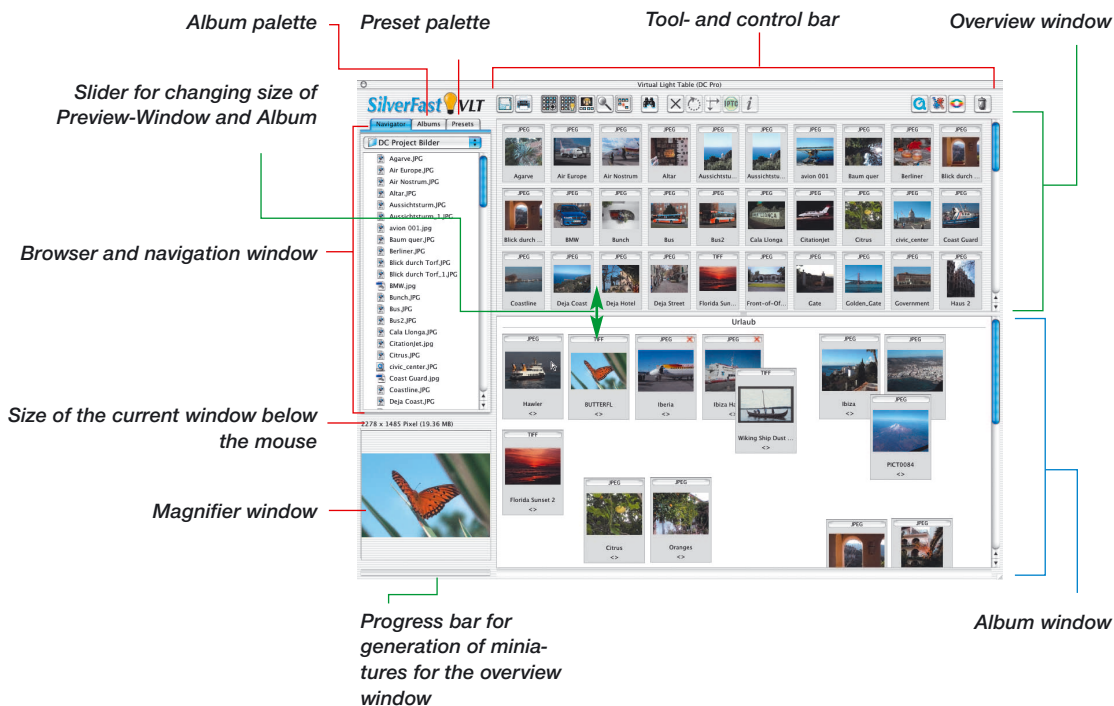
Because *SilverFast* allows this conversion to take place in the background, the user may continue with his work at the same time.

Launching the virtual light table (VLT)



Click on the vertical button bar, left of the prescan window, the “VLT” icon. The VLT opens immediately and fills the entire monitor. The *SilverFast* main dialogue will be hidden

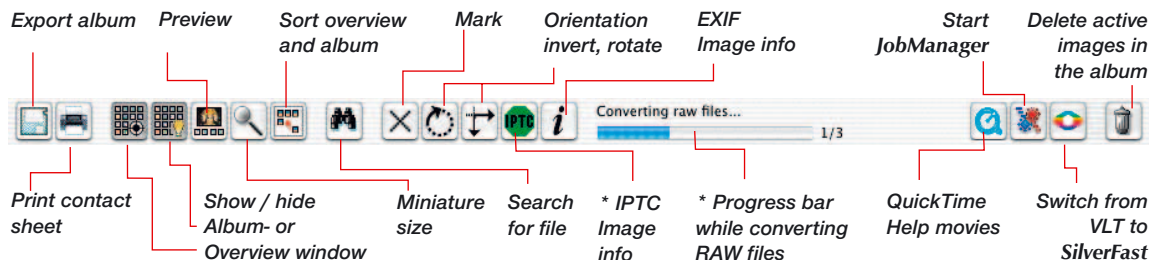
Arrangement of the VLT



The VLT is divided into five areas:

- Browser and navigation window
Alternative: Album palette with albums, or Preset palette
- Overview window
- Album window, the actual working area
- Magnifier window
- Tool- and control bar

Tool- and control bar details

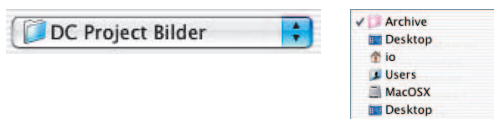
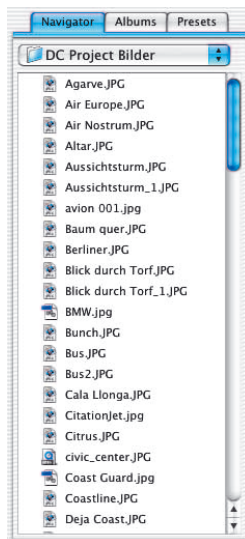


* Only available in SilverFastDCPro!

Browser- and navigation window

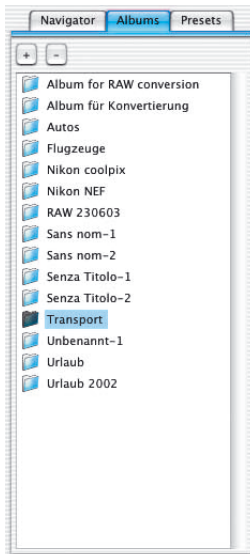
By means of the browser, the entire directory as well as all external storage medium may quickly and easily searched for images. Depending on the camera, the images can also directly be accessed from the device.

The upper popup menu shows the directory. It is possible to jump into any folder.



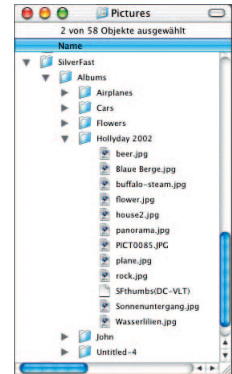
The contents of the folder are immediately displayed in the long roll bar. The images may be seen here, next to the folders. *SilverFast* displays thumbnail images for any picture recognized. The folders may be opened directly by double-clicking on them. They may also be opened or closed by clicking on the little triangles in front of them.

Album palette



The images are managed in the album palette and the respective album window. Any desired number of individual albums may be created. The contents of the album are displayed in the VLT-window and can be processed there.

New albums are created as an empty directory in the “Images” folder, located in the sub-directory “SilverFast \ Albums”. By dragging images from the Overview window, from the Navigator or from the Desktop into the Album-Window, copies of the original files are created. The original files always remain untouched. By means of the “Plus” button a new album is created. By clicking the “Minus” button, the active album is deleted.

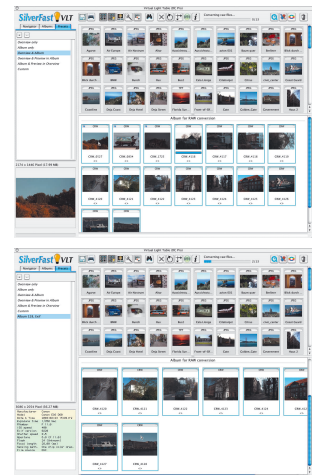


Presets-palette



By means of the five defined entries in the “presets” palette, the user-interface of the VLT may be changed by a single mouse click. These are: the parameters of the VLT, the visible VLT window, the thumbnail sizes, setting of the magnifying window and the parameters of the full image view.

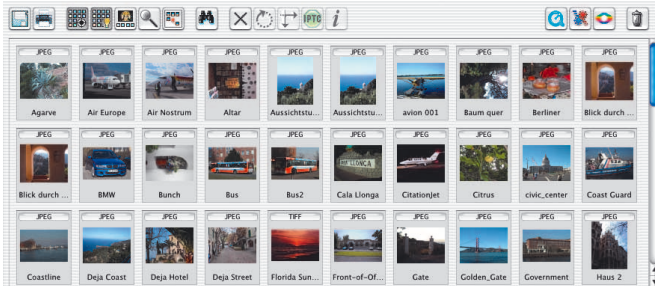
Individual settings of the user may be saved and deleted by clicking on to the Plus/Minus buttons.



Overview window and toolbar

If SilverFast recognizes images in the chosen directory, it will display miniatures in the overview window.

For later use, *SilverFast* generates a small file called “SFthumbs(DC)” into the chosen image folder.



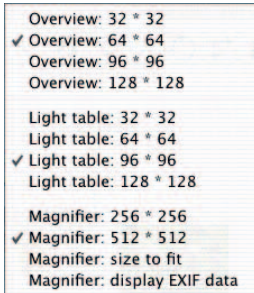
The overview window is freely scalable. The scroll bar on the right allows a quick overview even of a large amount of images.



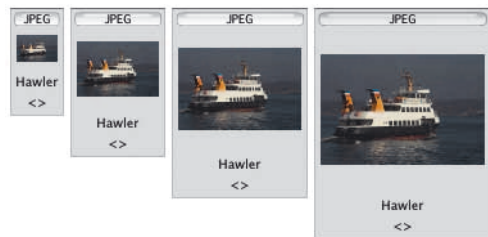
If a max overview is desired, the album may be hidden by clicking the “Hide/Show” button.



Clicking the button “Thumbnail size” allows the altering of the miniature sizes varying from 32x32 to 128x128 pixels. The example shows the difference in sizes:



The magnifier window can display up to 512x512 pixels. By means of “Display fitting” the image will always be displayed in maximum size of the magnifier window. By clicking “Show EXIF-data” some of the basic-EXIF files may be viewed in the magnifier window.

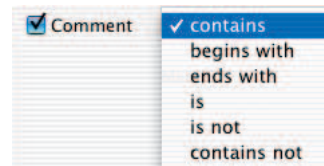
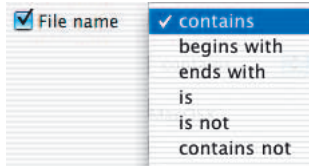
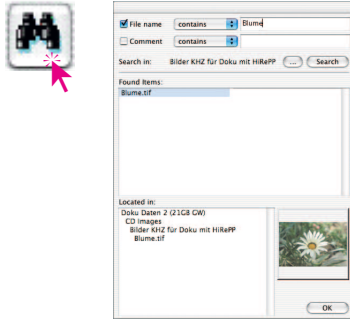


Size comparison

32², 64², 96², 128² pixel

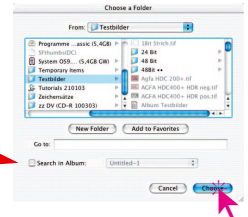
Searching

If you wish to directly search for a filename or the image comments, a simple click on the “search” button is sufficient. More search criteria may be entered:

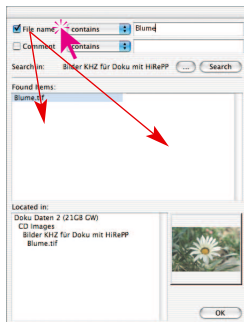


The “Directory” button marks the directory to be searched.

An Album to be searched can alternatively be chosen here.



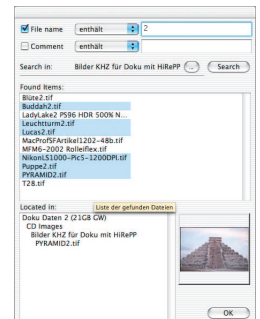
The search is started by clicking on the “Search” button.



All images that match the search criteria are immediately displayed in the middle window. By clicking on the file name, the entire path is shown and the miniature is displayed in the window.

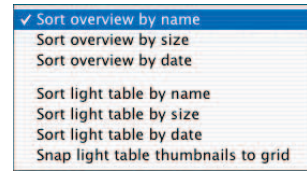
The found images may be dragged into the album window. By keeping the “Command” key pressed, single images may be added into the selection, and if the “Shift” key is pressed an entire series of images is marked.

Pressing “OK” closes the dialogue.

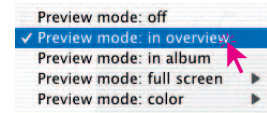




The miniatures in the overview window and Album window are also sortable by the respective buttons name, size and date.



By means of the “display Preview” button it is possible to display an enlarged activated image. The Overview or the Album-windows are used for this purpose.



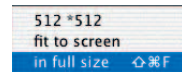
Activate Preview mode:

Full screen preview + + or type + clic

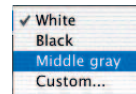
With activated Preview mode:

Next image Previous image

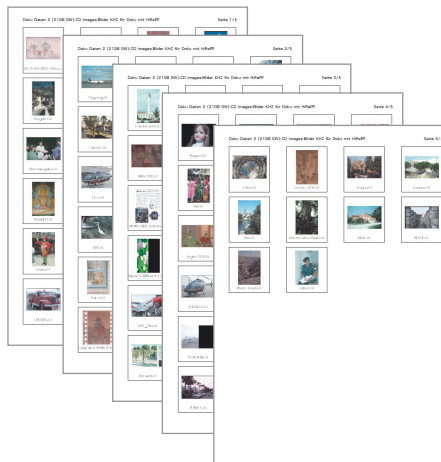
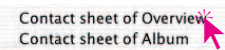
The “Preview mode; entire Monitor” option allows another size adjustment.



By the “Preview mode: Colour” option, the background color of the monitor may be selected.

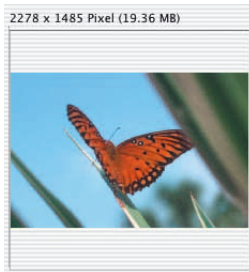


By clicking the button “Print” \ “Contact sheet overview”, the contents of the overview window may be printed like a contact sheet. The adoption of the image sizes is done automatically.



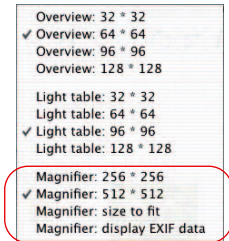
The header of the contact sheet includes the path and the page numbers.

Magnifier



The magnifier may be used in both the overview window and the album. If you move over any miniature, the contents of the image are immediately displayed in the magnifier window.

By clicking the “Size of miniatures” button the display size of the magnifier is adjustable in two steps, either 256 x 256 pixels or 512 x 512 pixels.



In the highest level there will be a slight increase in the size of the display so that the viewable area will move with the mouse.

By means of the “Display fitting” button, the image file is always displayed in maximum size within the magnifier window.

By clicking “Show EXIF-data” some of the basic-EXIF files may be viewed in the magnifier window.

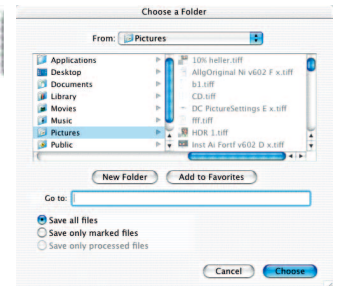
Above the magnifier window the pixel size of the current image is displayed.

Export albums



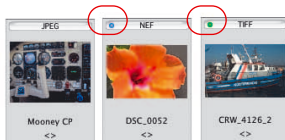
The images of any album as well as all set parameters may be saved by clicking the “Export Album” button.

By default the albums are saved in the “Images” folder of the registered user in the sub directory “SilverFast” \ “Albums” (Mac OS X)



Windows: Desktop \ user_data \ user Images \ SilverFast \ Albums

Blue* or green dots within the thumbnails

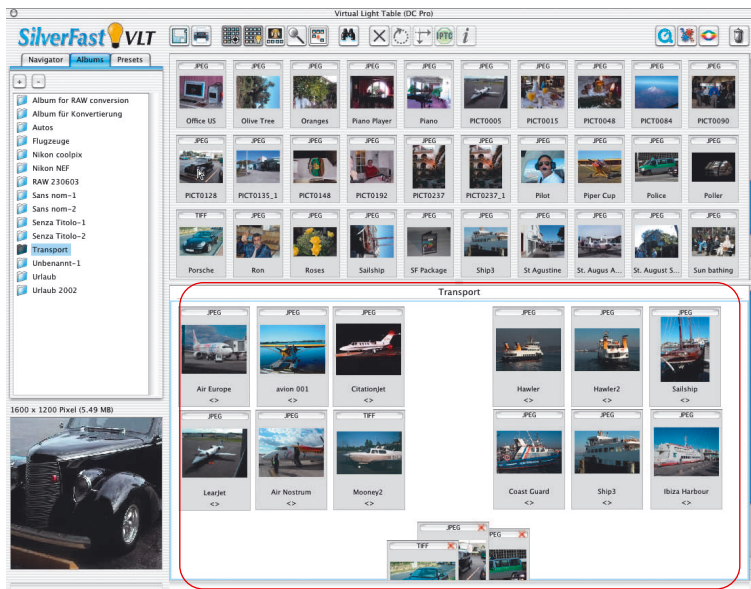


RAW-data images that are already converted are marked by a blue dot. These dots may be visible in the overview and in the album. Green dots mark images that have previously been corrected via the main menu of *SilverFastDC*, and been saved back as a copy into the album. Green dots are only available in the albums.

* This function is only available with *SilverFastDCPro!*

Album window – the central working place of the VLT

All previously introduced parts and functions group around a central window in the VLT – the album window. This is the main working area.



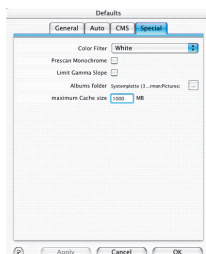
All directories containing image data are identified and saved by means of the browser. The central album window now acts as an organizer for these images.

Any number of individual albums are available. By clicking the album names in the album palette, the user may switch between the albums directly.

When switching, merely the album window is changed. The browser and the overview window remain untouched.

The path for saving the albums may be set to “General-palette / Options / Special-palette / ..”

For *SilverFast DCPro*, the size of the cache memory may also be set here.



Drag & Drop

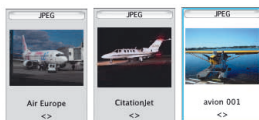
“Drag & drop” is the quickest and easiest working method. Images may be dragged out of the browser, out of the overview, out of the search dialogue or even directly from the desktop into the album window. Capture the files, drag them over the album window and release the mouse button.

Even entire folders may be copied directly from the desktop by this method.

If the Album window is hidden, images may be dragged directly onto the “Show / hide Album” button, or onto an album name in the album palette.



Each newly dragged image file is active; this is shown by the colored border and the bright background color.

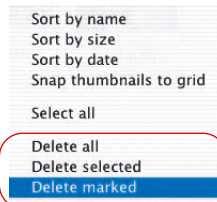


Sorting images in Album window



All images dragged into the the album may now be sorted. The easiest way is by drag & drop.

By using the context menu (Mac: “Ctrl” key, Windows: right mouse button) these images may be sorted by name, file size or date and aligned automatically in the album window.



This can be done in two ways:

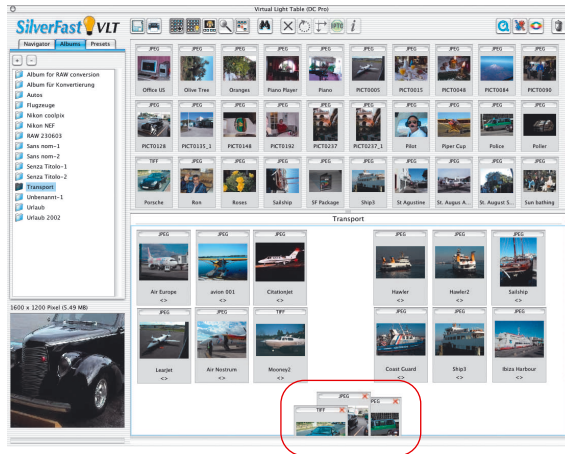
Sort by drag & drop: Activate the desired by a single mouse click and drag it onto an album in the album palette. activate the desired image by clicking on it and dragging it over any of the three other VLT icons.

With the “Command” key pressed (Windows. “>Ctrl” key) more single images may be marked and added to the selection.

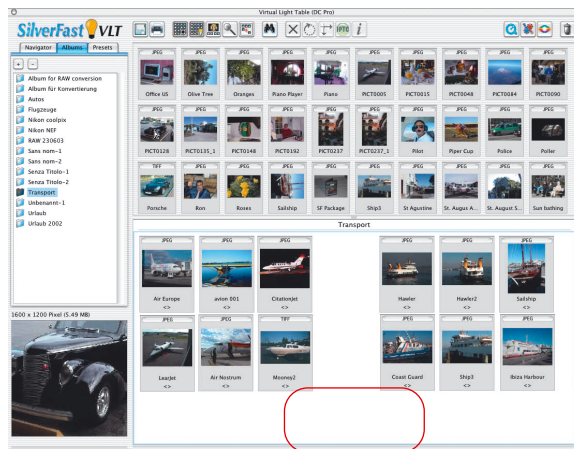
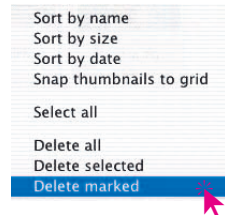
Naturally the images are also manually re-positionable and re-sortable within a one album.



Sort images by marking: First click on the “Mark” button. The mouse pointer switches to a cross as soon as it touches an album window. By clicking onto an image it will be marked with a little cross in the upper right corner.



The undesired images may then be deleted by the context menu.

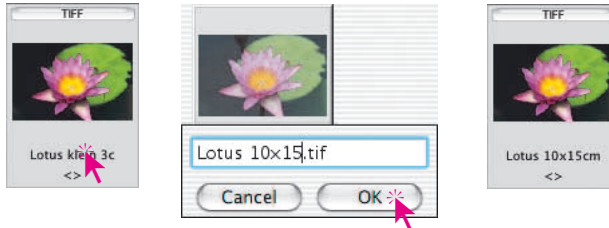


6.11

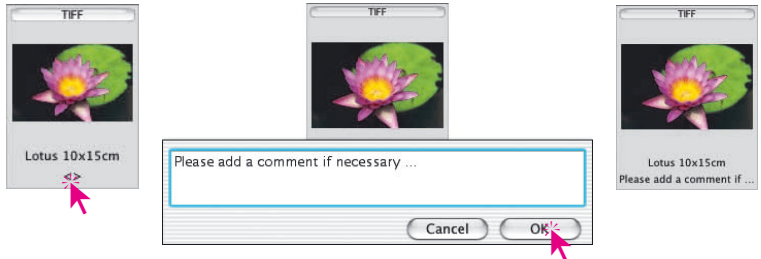
Editing name and image comments in the album

A small text field for image comments is available beneath the image name below the miniatures. Both may be edited in the album

Editing the file name: Click the name



Editing the comments: click on the empty tip of the brackets; i.e. on an already existent comment.

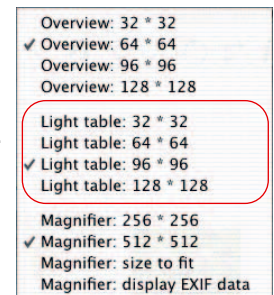


Setting the size of the miniatures in the album window



The thumbnails of the images are adjustable in their size, just as they are in the overview window. Again, four levels are available.

These settings are then valid for all albums.





Rotating and flipping images in the album

The images in the *album* window may be rotated and reflected by these two buttons.

The **rotation** is done clockwise in 90° steps; counter-clockwise if the “Shift” key is pressed.

The **reflection** is done by clicking the respective arrow head. By clicking the right arrow the image is reflected horizontally; and vertically by clicking the other arrow.



When clicking onto the rotation- or invert tool, a popup will appear stating that the selected image are being transformed without loss of data.



JPEG Files will immediately be transformed without loss of data. In all other formats, only the thumbnail will be transformed initially. To display pending changes in the image, the file name will be marked in red. The marked images may then be selected by means of the context menu “Chose imahes with pending changes”, or Drag&Dropped into the *JobManager* to be transformed there.

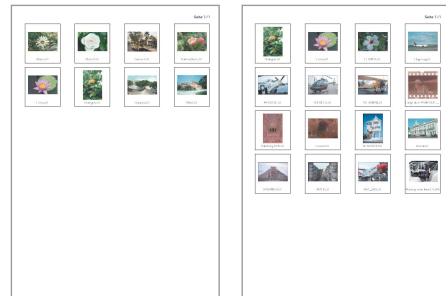


Printing the *album* contact sheets

By means of the “Print” \ “Contact sheet of album” button, the sorted contents of the *album* window can be printed like a photographic contact sheet. The adoption of image size, number of pages etc. is done automatically.

Each *album* is to be printed individually.

Only the page number is printed in the header of the contact sheet.



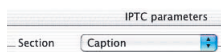
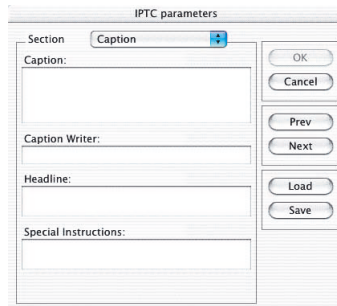
*** IPTC Image Information in the Album**



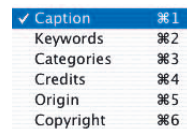
Attention: This function and the respective button are only available with *SilverFastDCpro!*

By clicking this button, the extensive IPTC image data may be viewed and edited for an active image in the album.

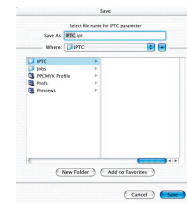
“IPTC” means “International Press and Telecommunication Council” and includes a standardised collection of information data which may be used by the image-authors, the holders of the image rights as well as image users for database purposes. Apart from copyright issues, the author may enter further data such as image title, date of image, keywords etc. By means of a database, the images may then be searched for specific criteria, making specific searches easy and fast.



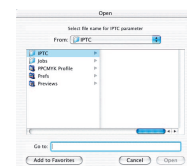
A variety of palettes is available in the “Selection” menu.



The entered IPTC data may be saved by clicking the “Save” button for reoccurring files.



By clicking the “Load” button, the set and saved IPTC data may be recalled.



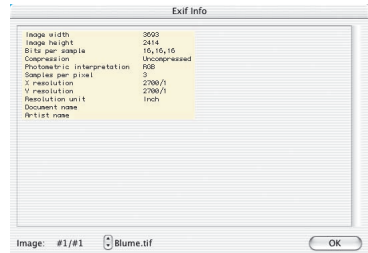
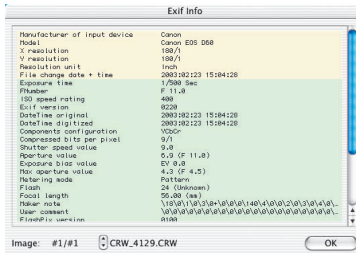
** This function is only available with SilverFastDCPro!*



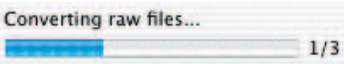


Gathering image information (EXIF)

By clicking this button, all EXIF information of the image (if available) is displayed.



In this example the complete EXIF information is shown in the left window, and the information of a 48bit RAW data scan on the right.

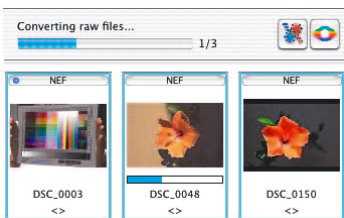


Progress bar*

Attention: This function and the respective button are only available with *SilverFastDCPro!*

The manufacturer-specific or even the camera-specific RAW data are usually only readable once they have been converted by an imaging tool. This conversion takes time and generally runs in the background of *SilverFastDCPro*. A progress bar displays the current status.

If more than one image is to be converted simultaneously, a small additional progress bar is displayed.



6.11

Size of the album window



The album window is freely scalable. The scroll bar on the right allows a quick overview even of a large amount of images.

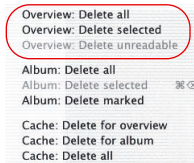
If a max overview is desired, the album may be hidden by clicking the “Hide/Show” button.



Deleting images in the albums



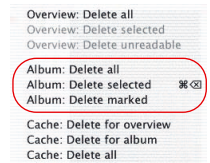
By means of the Popup menu “Trash” the images in the overview and the album may be deleted.



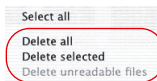
Popup menu “Trash”

for the overview

for the album

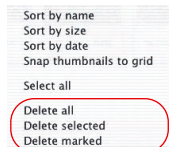


With help of the the context menu (Macintosh: Ctrl + click, Windows: right mouse button) images may be deleted too.



Context menu

for the overview



for the album

By the “drag and drop” function entire albums may be pulled to the trash.

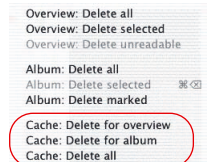
* Deleting the cache memory



The cache memory saves temporary files as well as help files from the RAW data conversion.

This cache memory may be directly deleted by the popup menu “Delete”.

The path for saving and the cache size may be entered in the main menu of *SilverFastDCPro*: “General-palette / Options... / Special palette / ...”



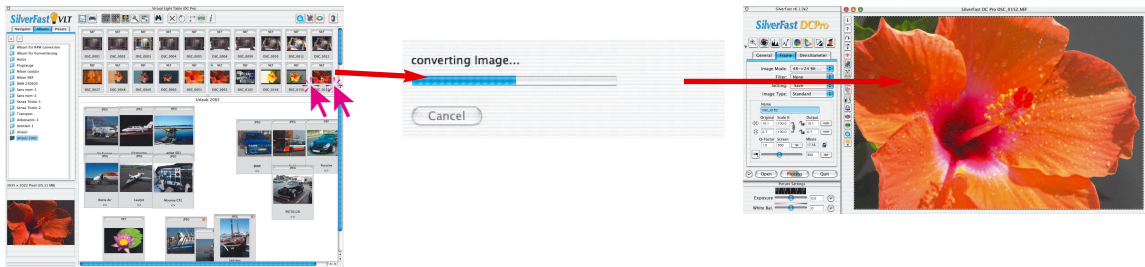
* This function is only available with *SilverFastDCPro*!

Optimizing images

Direct optimization in *SilverFast*

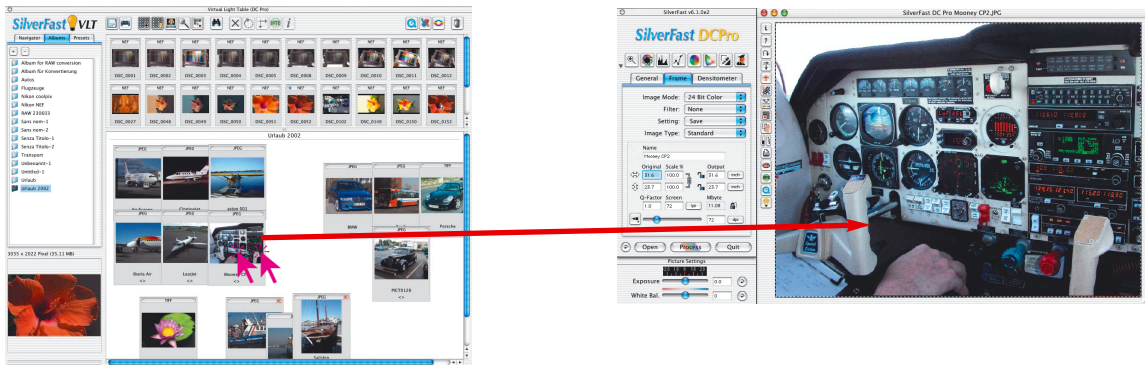
By double-clicking an image in the Overview- or album window it is directly passed on into the *SilverFast* prescan window.

Double-clicking on an unconverted RAW data file (only possible in *SilverFastDCPro*), will commence the conversion. The progress is displayed in the window.



SilverFastDCPro

Double-clicking a RAW data file in the VLT will start the conversion, and will open the file in the main menu after that.



SilverFastDC, -HDR

Double-clicking an image file in the VLT opens this file directly in the main menu.

* This function is only available with *SilverFastDCPro!*

All *SilverFast* tools are again available here.

The thumbnails of the RAW data images are marked with a blue dot after successful conversion.

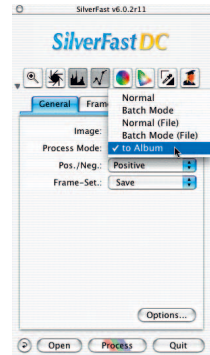


After finishing the optimisation, the image may be calculated and returned to the album as a corrected image by clicking the “Process” button.

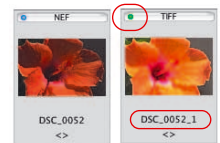


Please note that the option “To album” is selected in the “General” palette in the *SilverFast* menu “Process mode”!

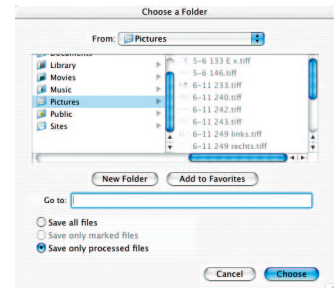
If not, the corrected image will be placed directly into the application, e.g. Photoshop; will be opened or placed in a different, yet to be distinguished directory.



The finished image is marked with a green dot in the upper left corner when placed back into the album. A numeric value is added behind the file name: “Name_1.jpg”.



If the optimisation of all images is done, the final images may be relocated directly out of the album into any different directory by means of the export button.



** This function is only available with SilverFastDCPro!*

Optimization by *SilverFast JobManager*

The second possibility to optimize images is the passing on to the *JobManager*.

This is recommended if time is to be saved and several images or even entire directories are to be optimized.



The *JobManager* is activated by clicking the respective button in the *VLT* toolbar. The selected images may then be passed on to the *JobManager* by the drag & drop function and will be processed there. The selected images may directly be handed over to the *JobManager* from the *VLT* windows by drag & drop.



Even complete albums may be dragged into the *JobManager* window.







Unconverted RAW data images* are converted when handed over to the *JobManager*. This is done in the background. Editing these images is only possible after complete conversion.

A VLT workflow example



1. Launch **SilverFastDC / SilverFastDCPro** and start **VLT**
2. **Browser:** Search for and choose file directory or drag images directly into the album window.
Image overview: Select images and drag them into the album window
Search function: Search for file names or comments and drag into album window. 
3. Repeat step 2 until all images are found.
Possibly hide overview window.
4. **Album window:** Sort images in desired manner
5. Edit **file names** and **image comments**.
Align incorrectly positioned images with the rotation and flip tool. 

Mark with the **Mark-Tool** 
Alternatively the images may also manually be sorted into different albums by the drag & drop method
6. **Delete the files marked** by the context menu. 
Re-sort the remaining images and **save the albums**. 
Print **contact sheets** if needed.
7. Hand over the first image to the **PreScan window** of **SilverFast** by double clicking it, optimise it there and by clicking the "Process" button hand back the corrected image to the album.
Time saving alternative: Start the **JobManager**, pass on the images by the drag & drop function and start the optimization there. 
8. Chose the next image for optimisation.
Repeat steps 7 to 8 until all images have been optimised.
9. If necessary, copy the optimised images into a different directory.

VLT keyboard shortcuts (Macintosh)

General

Select image seriesShift + : +

Select single imagesCommand + : +

VLT window

Open context menu .Ctrl button and click into VLT window: +

Activate allCommand + A: +

EXIF / Image infosCommand + i: +

Delete imageCommand + Backspace: +

Mark image as BadShift + click with marker: +

Full size PreviewCommand + Shift + F: + +

or typeSpace + click

With activated Preview mode: Next image

Previous image

VLT Keyboard shortcuts (Windows)

General

Select image seriesShift + : +

Select single imagesCtrl. + : +

VLT window

Open context menu .Ctrl button and click into VLT window: +

Activate allCtrl.+ A: +

EXIF / Image infosCtrl.+ i: +

Delete imageDelete:

Mark image as BadShift + click with marker +

Full size PreviewCtrl + Shift + F: + +

or typeSpace + click

With activated Preview mode: Next image

Previous image

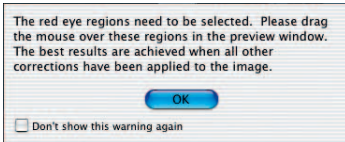
Red Eye Tool



A new function is available from *SilverFast 6* onwards. It is located in the vertical button row, left of the Prescan window; a tool for color-correction of “red eyes”.

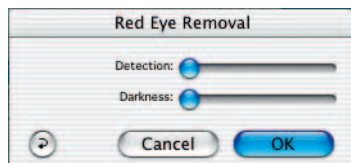
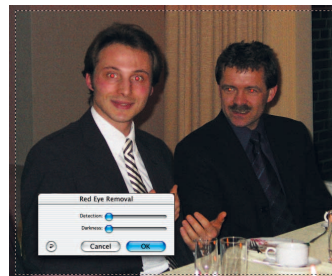
Red eyes occur in flashlight portraits, if the distance between the flash and the lens is small and the pupils of the photographed person are open wide.

First start a Prescan of the portrait to be corrected. Click the button “Remove red eyes”.



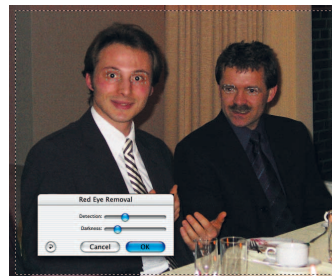
A note will appear, mentioning that a frame is to be drawn around the eyes on the image.

Click “OK” and use the mouse to draw a frame around the eyes. By keeping the “Shift” key pressed, numerous individual frames may also be drawn. By pressing the “Alt” key, these individual frames can be removed.



Within the now opened dialogue window, the red eyes may now be neutralised by means of the sliders. By clicking “Detect” the sensitivity of the color detection is determined, and by clicking “Darkness” the degree of darkness of the pupil can be adjusted.

By clicking the “OK” button, the settings are accepted.



The “Remove red eyes” button now displays a darkened centre. By clicking onto the button and then into the correction frame this function is disabled.

Correction of exposure and white balance



A new feature in *SilverFastDC* Version 6 or higher is the menu "Picture Settings" for adjusting the exposure and the white balance. It is an individual window that normally appears below the main dialogue.

The slider "Exposure" simulates a change in the exposure of the image. In general the adjustment range comprises plus/minus two frames.

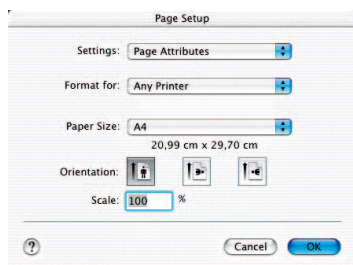
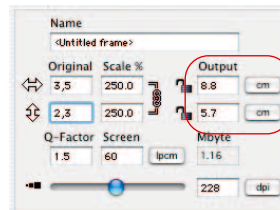
The slider "White Bal." offers a quick and easy correction of the white balance in the image. By using this feature, incorrect camera settings can be compensated.

Printing directly out of the Prescan window



In *SilverFast DC* Version 6 it is possible to pass on the contents of the active image frame in the preview window directly to a connected printer. Hence it is unnecessary to save and reload the image in an imaging software for a quick printout.

The size of the image to be printed can be set in the scaling dialogue in the “Frames” palette.



The printing menu is opened by clicking the “print” button in the vertical button bar located left of the Preview window. The settings in this menu are dependant on the printer driver and vary respectively. Enter your settings here and start the printout.

SilverFast remains open after commencing the printout. By this means it can be decided if the image is to be saved even after the actual printout.

Advanced print dialogue in the VLT



Contact sheet of Overview
Contact sheet of Album

Enhanced print dialog...

The print menu in the VLT contains not only the possibility to print contact sheets of Albums or printing an overview, but also include the “advanced printing dialogue” in order to print out a selection of images from an Album or from the overview.

Contents of the advanced print dialogue

Page
Add or delete

Page number
Page breaker

Image list
Chose images from Album or Overview.

Layout
Preset which size of the image should be considered in the print.

Tools

- Add
- Delete
- Rotate
- Reflect vertically
- Reflect horizontally
- Centre
- Adjust
- Cut

Rulers
Measurement unit: cm

Page settings

Start printout

Size of active image

Close dialogue

Window of printed page

Printing area

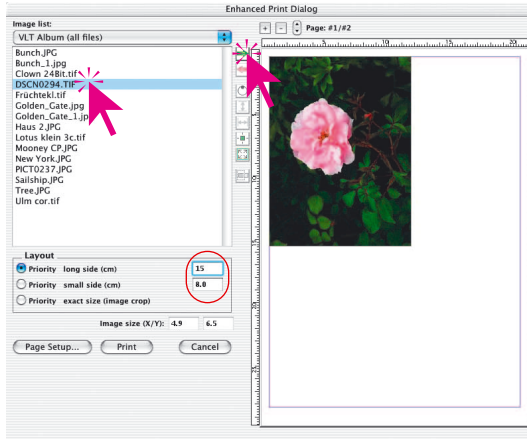
Active image
Marked by blue surrounding

Print single image

- ✓ VLT Album (all files)
- VLT Album (selected files)
- VLT Overview (all files)
- VLT Overview (selected files)

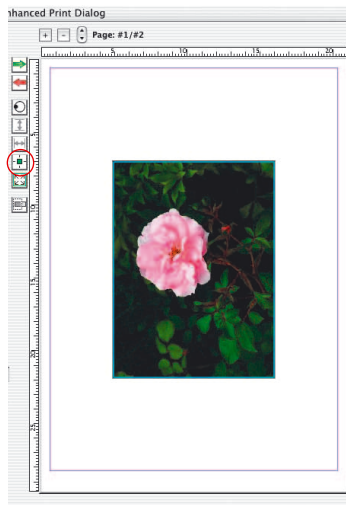
In the context menue “**Image List**” the user may chose of all / a selection of images of the active Album / the active overview in the left part of the dialogue window shall be listed.

Select an image by a mouse click in the image list and enter the values fort he desired printing size in the “**Layout**” (here 15x8cm)



By clicking the “**Add**” button, the image will be passed on to the printer and automatically be placed in the upper left corner of the printing sheet by *SilverFast*.

If you want to change the placing or the size, this can be done by means of the buttons located left of the printing window.

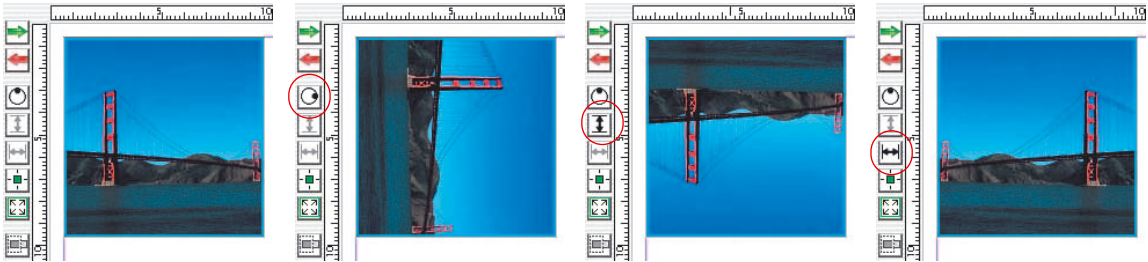


Left: Centre image in printout
Right: Fit image to printout





The orientation is also alterable. By clicking the “Rotate” button, the image is rotated in 90° steps. By means of the “Invert” buttons, the image may additionally be inverted vertically and horizontally.



All previous changes left the image in its original size-relation. If you want to change the proportions of this image, simply activate the “Cut image” option.

In the activated mode the selection can be done in an active image by click-dragging the image. Doing this on the edges allows cutting of the image.

A cut image may be resized again.

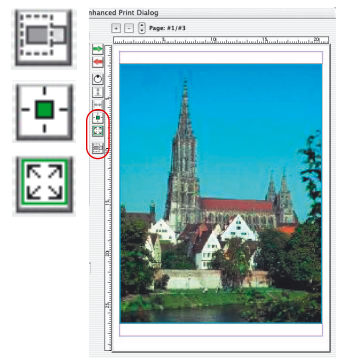
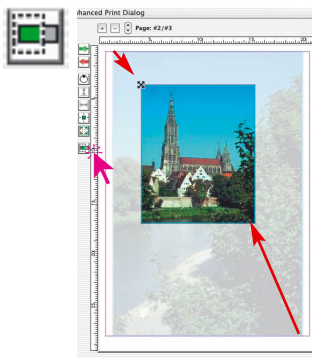
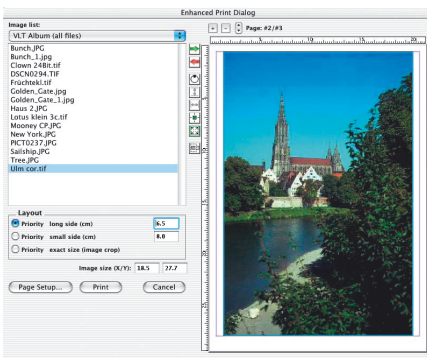
If the “Cut image” mode is deactivated, the proportions of the image may not be altered; only size, position and orientation is alterable.

A cut image can be protected against further changes.

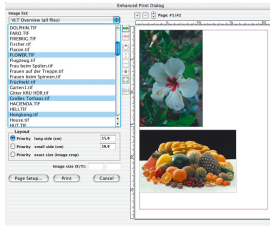
Lower left: Image in its original proportion (Cut mode deactivated)

Centre: Cut image (Cut mode activated)

Right: Cut image fit to page (Cut mode deactivated)



- ✓ VLT Album (all files)
- VLT Album (selected files)
- VLT Overview (all files)
- VLT Overview (selected files)

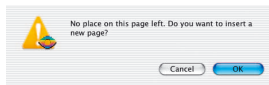
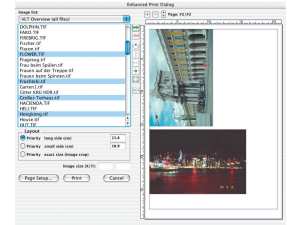


Transfer several images to printout

By way of the popup menu “Image list“ it can chosen if all / a selection of images are to be listed from an active Album / the active overview in the left part of the dialogue window is to be listed.

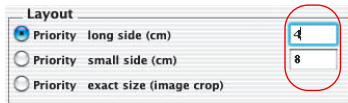
Images are to be selected from this list by the “Add“ button to pass them on into the printout window. SilverFast will automatically try to place these images in an optimum manner on the print sheet.

In case the printing area is not enough, SilverFast will ask if more printing sheets are to be used.

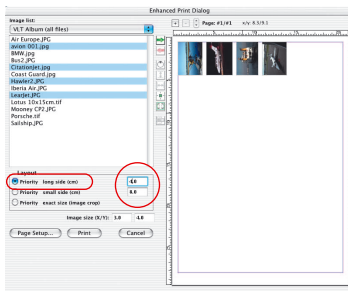


The number of pages as well as the number of the active page are displayed above the window. The pages may be turned by means of the little arrow buttons.

By clicking the “Plus“ and the “Minus“ buttons respectively, printing sheets may be added or deleted manually.

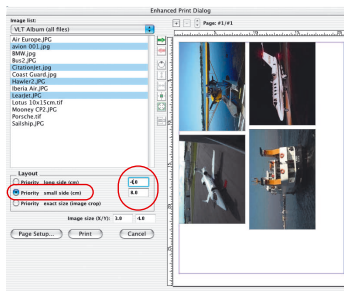


The size of the images that will be printed out is adjustable in the presets under the “Layout“ menu. The “Priority“ determines if all images use the same long page, the same short page or the exact entered values on the printout.



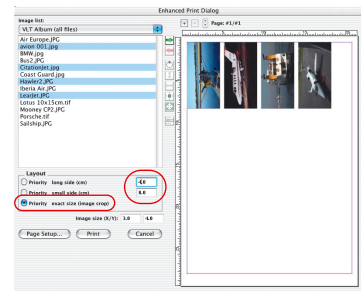
Priority long side

The selected images were all inserted with a long page of 4 cm.



Priority small side

The selected images were all inserted with a short page of 8 cm.



Priority exact size

The selected images were all inserted with an exact size of 4x8cm. Since in this case the image contents were larger, they were cut to 4x8 cm.



Naturally all single images may also be varied in size by click-dragging them manually in the printout window:

Click-dragging within an image moves the entire image.

Click-dragging an edge / a corner alters the image size (proportionally if the “Cut image” button is deactivated, i.e. i fit appears grey).



By means of the navigation buttons left of the print window, rotating, inverting etc. Is possible:



Add: The images selected and marked are passed on to the printing window.

Delete: The selected images are removed from the printout..

Rotate: The selected image is rotated in 90° Steps. The dot at the circle shows the orientation.

Reflect vertically: The active image is reflected vertically in the print window.

Reflect horizontally: The active image is reflected horizontally in the print window.

Centre on page: Places the image centrally in the printout

Adapt to page size: The active image is proportionally adapted to the printing area.

Cut image: If this mode is activated the are of the image can be selected manually by click-dragging the mouse. If this option is deactivated, the proportions of the image may not be changed; only size, position and orientation may be altered.

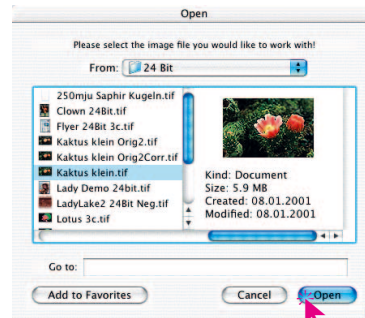
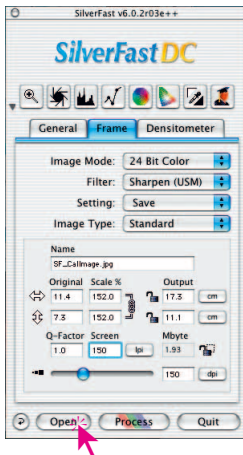


„Creative“ work is also possible: Images may be placed over each other – e.g. one image may be chosen as a large background, while other, smaller ones are placed over it.



Opening an Image with the “Open” Button

Clicking on the “open” button activates a dialog used for selecting the device or folder containing the images:



Open an image directly by double clicking on the name or by single clicking on the name and clicking the “open” button. The image will be opened within the *SilverFast* prescan window.

IT8-Calibration with *SilverFast DCPro*

Differences in calibration between a scanner and a digital camera

When calibrating a digital camera, several factors have to be taken into account.

The great advantage of scanners is that they work with almost constant conditions: it has an almost constant light source, a fixed colour temperature and a constant distance between the object and the sensor, as well as an absolute array between object and sensor.

This is completely different with digital cameras! Nothing is really constant or standardised, leaving the camera much more flexible and therewith hard to calculate.

An IT8-calibration can be performed but, strictly speaking, lasts only as long as no changes are made to the surrounding factors.

These conditions are generally only found in photo-studios, Tabletop or during repro-photography. They are strongly variable when working with changing light conditions, outdoor photography, etc.

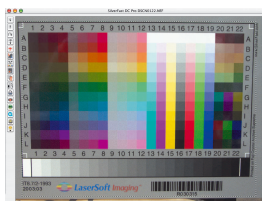
Each deviation of the factors makes the calibration work for only one single photo. If a light source is moved in a photo studio, a new calibration-photo is to be made. In order to do this, simply place a suitable IT8-target on a prepared stand into the photo to be taken, and capture the IT8-target in the photo. Then remove the target from the set, and re-shoot the photograph. By this method, two photos are taken, first one for calibration and after that the actual photograph. Professionals know the procedure with grey card tests – the objective is the same with the steps described here.

Steps of a calibration with *SilverFast DCPro*

Other than with flatbed- or film scanners, digital camera users will often come across angularly photographed IT8-targets. A chart that is exactly perpendicular to the optical axis of the camera could reflect and hence make the photograph useless for later calibration.

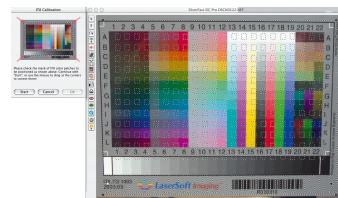
For compensation of angular distortions, *SilverFast DCPro* is equipped with a flexible and perceptively variable scan frame. This frame contains a grid that resembles the individual measurement fields of the IT8 target.

The calibration itself is the same as in all other *SilverFast Ai* versions. The only difference is the different positioning of the scan frame.



Launch *SilverFast DCPro* and load the IT8 image into the preview window of the main menu.

Open the IT8-dialogue by clicking the respective button in the vertical toll palette, located left of the preview window.

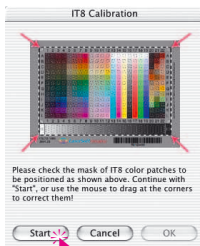
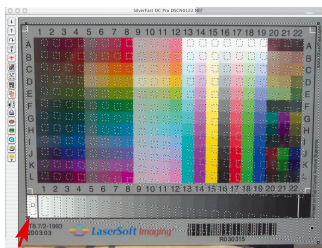


The grid will immediately appear in the preview window.

Position the grid exactly over the IT8 target.



By means of one mouse click into the IT8 Image of the dialogue window, the frame is set back to the standard position



Once the frame is set correctly, the calibration may commence by clicking the “Start” button.

The following sequence is identical to the normal *SilverFast* IT8-calibration.

For more information please read Chapter 7 “Calibration of your Scanner using *SilverFast* IT8-calibration”.