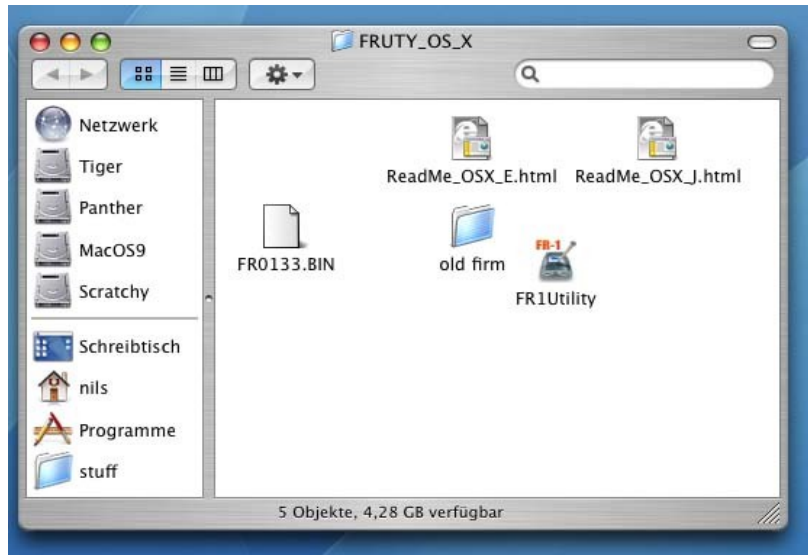


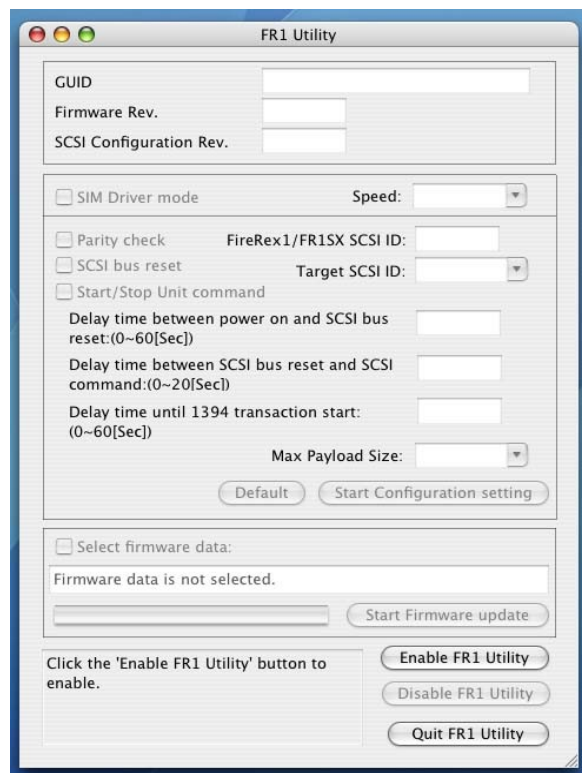
## **Configuration of the Ratoc Adapter if the scanner cannot be found or properly operated by SilverFast:**

Step -1- Start the FR1Utility (latest Version, can be installed from the Ratoc- CD, or downloaded from [www.ratocsystems.com](http://www.ratocsystems.com) )



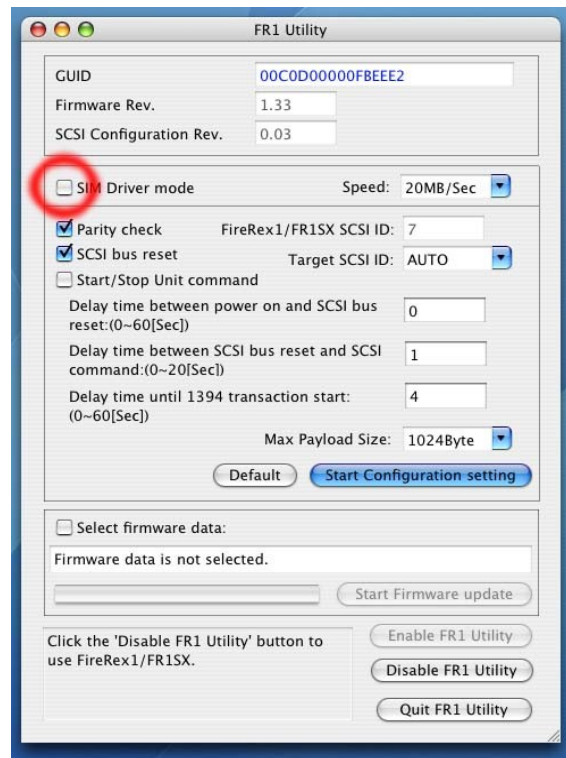
Step -2- If the utility is currently in „disabled“ - mode ( refer to the image below ), please click on „Enable FR1 Utility“ and after entering your password restart the computer.

Otherwise, please continue with step 3



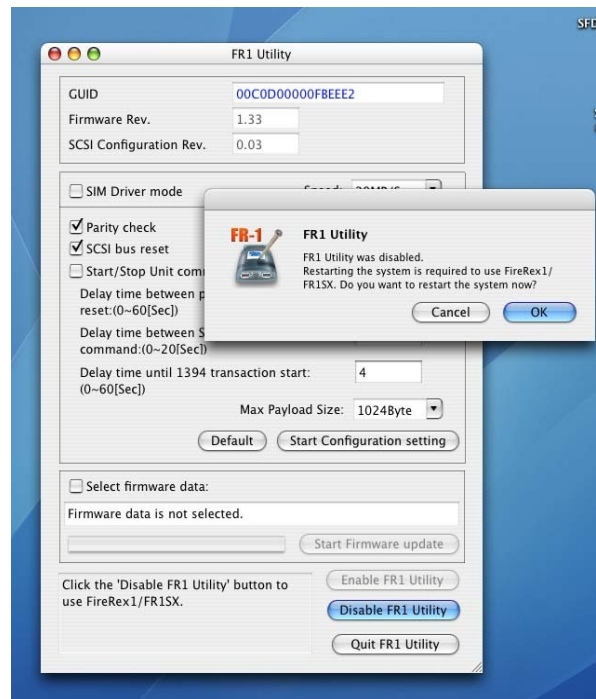
Step -3-  
special

Please change the configuration of the FR1Utility as shown below. Please pay attention to the indicated checkbox- it needs to be un-checked. When done, please click on „Start Configuration setting“.



Step -4-

Now, please disable the utility again, enter your password when prompted and restart the computer. The scanner should operate correctly now. Please do not start the utility again or set it to „enabled“- mode, unless you are experiencing further problems..



In case you have questions, or need further help, please contact LaserSoft Imaging Support:

<http://www.silverfast.com/contact/en.html>