



ScanPilot

- Apply / execute current tool **RETURN**
- ScrollCursor **↑** or **↓**

PreScan/Scan

- Stop prescan / stop scan **⌘** + **⏏**
- Switch between colour spaces **CTRL** + Scan button
- CMYK-Preview **⌘** + **ALT** + click on preview

Frames

- Frame numbers visible **CONTROL**
- Duplicate frame **ALT** + click
- Set frame to full scan size **⌘** + **A**
- Delete frame (extended keyboard) **DEL**
- Delete frame (normal keyboard) **ALT** + **BACKSPACE**
- Frame reset **ALT** + click on "Option" button

Auto adjust

- Resetting auto-adjust **ALT** +

Highlight/shadow tools

- Set highlight white triangle
- Set midtone pipette
- Set shadow black triangle
- Multiple attempts with a tool hold down **ALT**
- Pipette hold **ALT**
- Reset highlight / shadow **ALT** + pipette
- Display brightest point **⌘** + **SHIFT**
- Display darkest point **CONTROL**

Histogram

- Show result histogram **ALT** in histogram-dialog

Selective colour correction

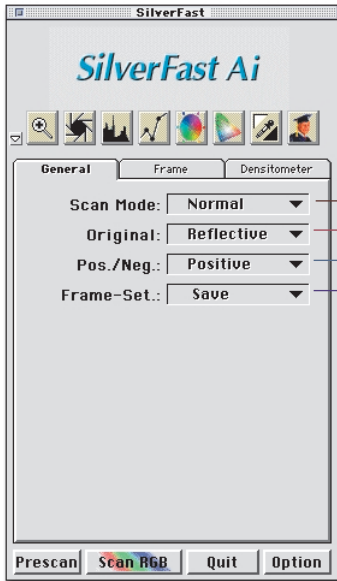
- Select all colours **⌘** + **A**
- Select colour in prescan **SHIFT** + click in prescan
- Select additional colour click on LED

Reset

- Reset all parameters **SHIFT** + click on "Option" button
- Frame reset **ALT** + click on "Option" button
- Delete a preset hold down **SHIFT** click once with mouse pointer on a preset's name
- Undo/Redo last Operation **⌘** + **Z**

Opening a dialog window

- Zoom in preview **⌘** + **1**
- Image auto adjust **⌘** + **2**
- Histogram dialog **⌘** + **3**
- Gradation dialog **⌘** + **4**
- Global correction **⌘** + **5**
- Selective colour correction **⌘** + **6**
- Expert dialog **⌘** + **8**
- Leave dialog **ESC**
- Start scan **RETURN**
- Undo/Redo last operation **⌘** + **Z**
- Show scan resolution **CONTROL**
- Show resulting interpolated resolution **CONTROL** + **SHIFT**

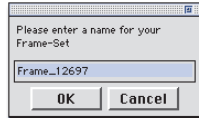


Normal
Batch Mode
Batch Mode TIFF

Reflective
Transparency

Positive
Negative

Import
Save



Scan mode selection

Normal: for single scans. Will scan only the currently active frame. SilverFast will reopen automatically only if the corresponding checkbox in Option/General is checked.

Batch mode: will scan all drawn frames in preview window directly into host application.

Tiff batch mode: will scan all drawn frames in preview window to a given location on a data carrier.

Selecting hardware condition reflective or transparency unit of device (or document feeder, if applicable).

Selecting positive/negative scan.

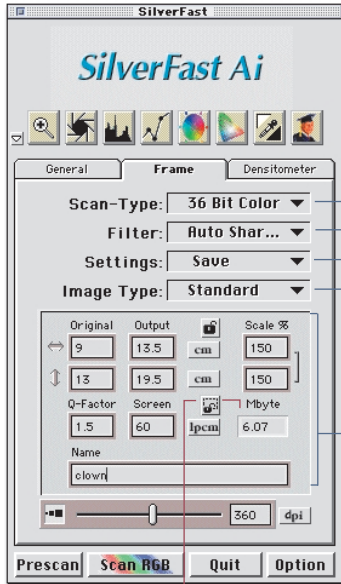
Importing and saving of individually determined scan frames.

Main menu hidden



SilverFast Ai

Frame tab



36 Bit Color
12 Bit Grayscale
1 Bit Line Art

Colour depth selection
may differ with each scanner type.

None
Less Auto Sharpen
Auto Sharpen
More Auto Sharpen
Unsharp Masking
Descreening

Filter
preset selections: unsharp masking, descreening, none.

Import
Save

Save and import
of individual settings.

Standard
Landscape
Skin tones
Gold tones
Technic
Evening
Snow
Night
H-S-Cast
Highlight Cast
Shadow Cast
<user defined...>

Image type pre-selections
auto correction (auto gradation) with predefined values for various image characteristics.

Scaling controls



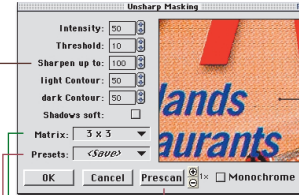
Scan-resolution
defined automatically with Q-factor and value entry in Screen or manually.

Pixel-lock
with the lock closed the file size (pixel-quantity) remains unchanged.

Original sizes
width and height correspond to the currently set scan frame.

Output sizes
allows separate entries for width and height (see scaling factors).

Unsharp masking



Sharpness control
before / after check upon mouse-click in scan window.

Controlling sharpness

Matrix
selecting pixel-radius for unsharp masking.

3 x 3
5 x 5
7 x 7

Presets
for saving and loading of individual settings.

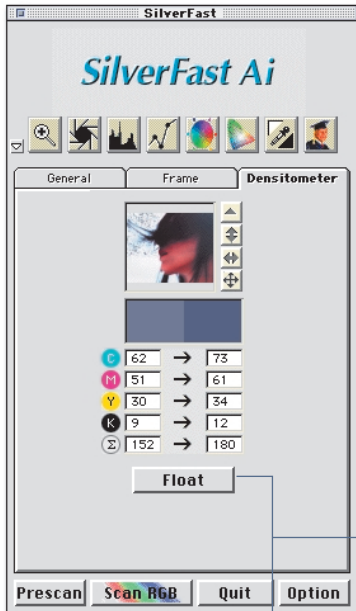
Prescan
full-resolution scan of a given section for reliably judging image sharpness.

Scaling factors

with the line interrupted separate value entry is allowed (separate value entry will distort image).

Proportion lock

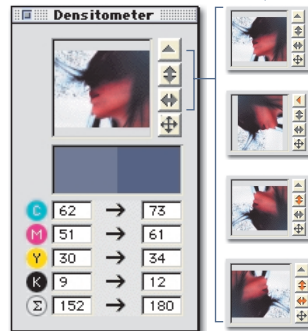
with the lock closed proportional scaling of scan frames is allowed.



Float button

clicking this button will display the densitometer in a separate window to be moved around on screen.

Rotating, mirroring, toppling
in the overview the image can be topped, mirrored and rotated in 90° steps.

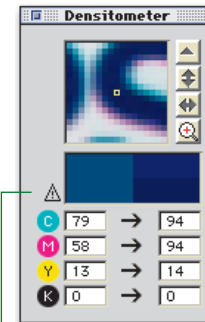


Colour model

click into the value cells to leaf through the possible colour models. The left column shows the values as seen by scanner, and the right column shows the values after manipulation.



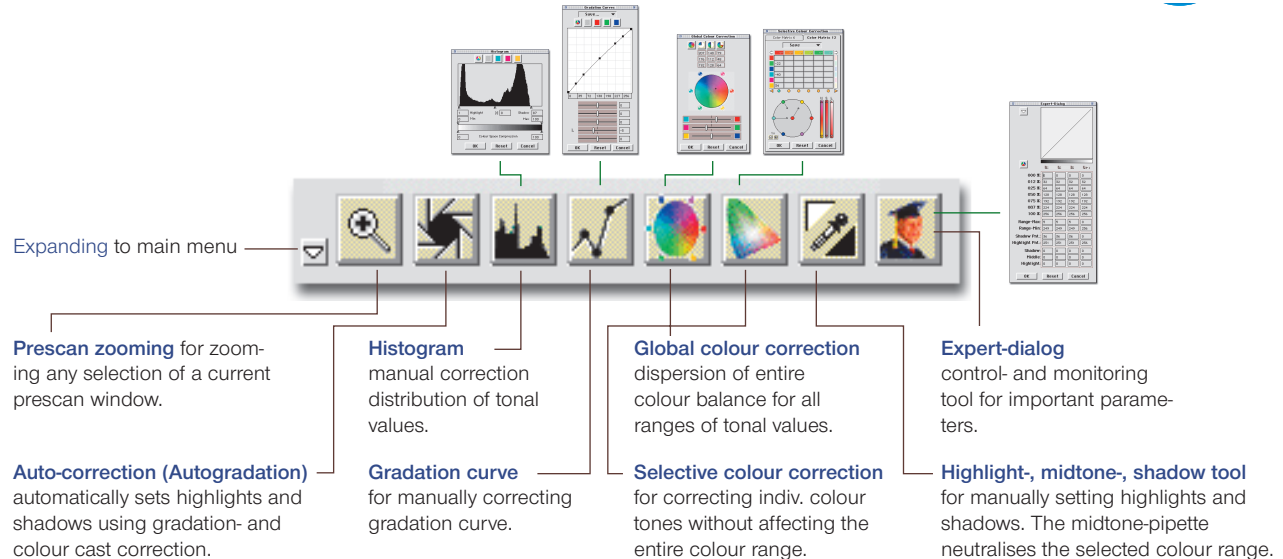
Overview and zoom
shifts between overview and zoomed view, maintaining full measuring functionality in both views.



Before / after colour
this cell is subdivided vertically. The left side displays the colour as seen by scanner and the right side displays the colour resulting from the applied corrections made.

Gammut-warning

A warning triangle indicates the presence of unprintable colours. The right cell is divided horizontally where the upper part indicates the printable colour which is closest to the unprintable colour.



The **neg. sign** in the magnifying glass and the **red dots** in the middle icons indicate the execution of automatically or manually performed manipulations. Holding down the Shift key will change the **Option**-button in the Start-bar to **»Reset all«** for a global reset of all values.



Prescan (Open*)

initiates preliminary scan

*In *SilverFast HDR*, *SilverFast DC* and *SilverFast Photo CD* this button is named «Open» which will open a dialog for loading image data files.

Quit

quits *SilverFast* and returns to host application.

Option dialog **General** tab
see next page



Scan-button

initiates final scan.

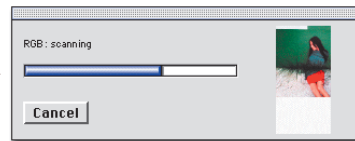
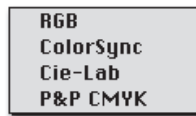
with the command key (⌘) pressed and clicking this button will expand a menu for selecting colour model.

Selectability of a given model depends on settings in the **defaults** window.

Option

opens „defaults“ window for necessary and specific adaptations.

Option dialog **auto**
see next page

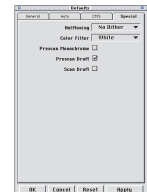
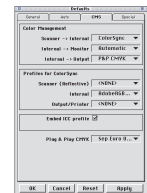
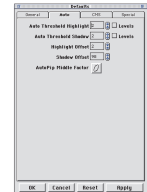
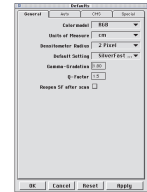


Scan

progress bar of scan process.

Option dialog **CMS**
see next page

Option dialog **Special**
see next page





Option dialog General

- Toggle **colour model** — **RGB** / **CMY**
- Toggle **unit of measure** — **inch** / **cm**
- Densitometer** measuring radius — **1 Pixel** / **2 Pixel** / **3 Pixel**
- Scan gamma** adjustment
- Q-factor multiplier** for optimum scan resolution through screen- and output size values.

Option dialog Auto

- Auto Threshold** adjusting sensitivity of auto correction, setting its trigger-point for highlights and shadows.
- Min- max** values for highlight / shadows
- AutoPip Middle Factor** fine adjustment of auto control in mid tone range.

Option dialog CMS

- Colour management control panel** setting preferred colour management for correcting hardware-based colour deviations.
- Profiles for ColorSync** assigning profiles supplied with operating system ColorSync (Mac)/ ICM (PC) when either one was selected in Color Management section.
- Embed ICC profile** when CM is selected, SilverFast writes the given ICC profile into the image file.
- Plug&Play CMYK** choosing separation table or ICC-Profile.

Option dialog Special

- Halftoning** dithering when scanning halftone images in line art mode. Available options may differ with each scanner model.
- White Red Green Blue** Colour to be ignored in monochrome scans.



Histogram CMY

CMY/RGB shift Gray scale channel CMY/RGB colour channels

Setting highlights (CMY)

Highlight value (CMY)

Min value for highlight

Highlight compression

slider value

Setting shadows (CMY)

Shadow value (CMY)

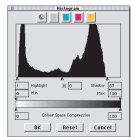
Max value for shadow

Shadow compression

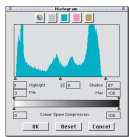
slider value

Setting mid tones

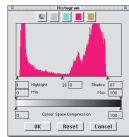
Switch linear (N) and logarithmic (L)



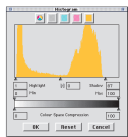
Histogram
CMY



Histogram
CYAN



Histogram
MAGENTA



Histogram
YELLOW

Gradation dialog

CMY/RGB-shift Gray scale channel CMY/RGB colour channels

Saving gradation curves

Gradation curve

Fixable curve points

Value entry for curve points

Contrast

Brightness

Highlights

Mid tones

Shadows

Switch linear (N) and logarithmic (L)

PhotoShop-Import...
SilverFast-Import...
Save...

Please enter a name for your
Gradation Curve

Curve_32179

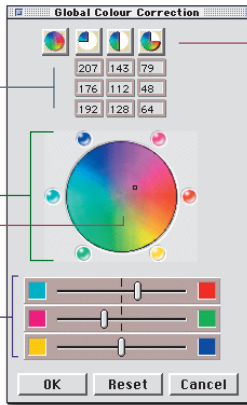
OK Cancel



Global colour correction

Numeric values resulting from editing.

Colour balance manually by moving the pointer in the colour wheel, or by clicking on the colour-marbles off the colour wheel, or by moving the sliders.



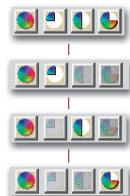
Selecting range of global colour correction

Full range

25%-tones

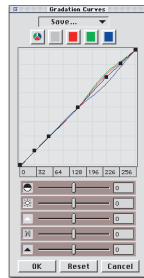
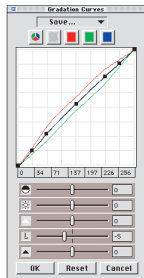
50%-tones

75%-tones



Resulting gradation curve after applying gcc on full range.

Resulting gradation curve after applying gcc on 25% tones



Selective colour correction

Selecting matrix six colours or 12 colours.

Colour correction presets. Scroll-arrows for selecting further colours

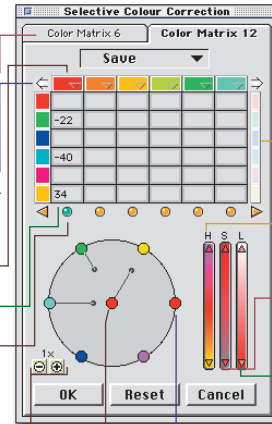
Selected colours

Correction values

Active colour

- Red_stronger
- Red_weaker
- Red_Magenta +
- Red_Magenta -
- Red_brighter
- Red_warmer
- Red_colder
- Red_duller
- Save

Please enter a name for your selective-Correction
Correction_18252
OK Cancel



Simultaneous manipulation of various colours.

Colour Saturation Brightness

Current colour hue

Added or subtracted colours

Changing measurementscale of colour wheel.

Saving dialog



CMY

RGB

Shrinking the panel

Selecting colour space

colour channels

Gray channel

Gradation parameter

Colour space compression

Min/max values highl./shadows

Shadow mid tone highlight control

	R:	G:	B:	Gr:
000 %	0	0	0	0
012 %	32	32	32	32
025 %	64	64	64	64
050 %	128	128	128	128
075 %	192	192	192	192
087 %	224	224	224	224
100 %	256	256	256	256
Range-Max:	5	5	5	0
Range-Min:	249	249	249	256
Shadow Pnt.:	36	36	36	0
Highlight Pnt.:	251	251	251	256
Shadow:	0	0	0	0
Middle:	0	0	0	0
Highlight:	0	0	0	0

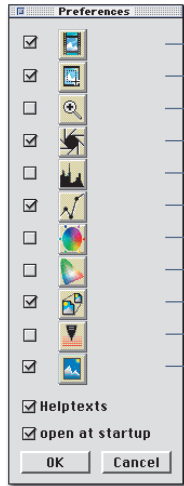
OK Reset Cancel

Shrunk expert dialog gradation curve is not shown.

SilverFast Ai ScanPilot and concept of optimising images

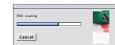
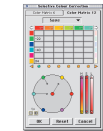
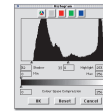
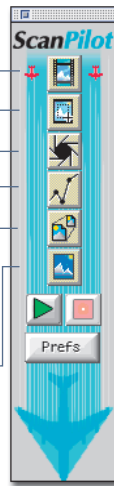


Functions to be made active for the ScanPilot



- Prescan
- Scan frame
- Zoom
- Auto correction
- Histogram
- Gradation
- Global colour correction
- Selective colour correction
- In- and output scaling
- Unsharp masking
- Final scan

Scan-Pilot



1. Setting highlight- / shadow points manually in histogram or automatically with the auto correction.

Auto correction adjusts highlight- and shadow points in histogram and the mid-tone slider in the gradation dialog.



2. Gradation optimizing can be manually in the gradation dialog or via auto correction.



3. Selective colour correction

4. In- and output scaling has to be set prior to unsharp masking!

5. Unsharp masking

6. Choosing scan mode

7. Final scan process



ScanPilot

Apply / execute current tool **RETURN**
ScrollCursor **↑** or **↓**

PreScan/Scan

Stop prescan / stop scan **CONTROL** + **.**
Switch between colour spacesclick with right
CMYK Preview **CONTROL** + **ALT** + click on preview

Frames

Frame numbers visibleRight mouse button
Duplicate frame **ALT** + click
Set frame to full scan size **CONTROL** + **A**
Delete frame (extended keyboard) **DEL**
Delete frame (normal keyboard) **ALT** + **BACKSPACE**
Frame reset **ALT** + click on "Option" button

Auto adjust

Resetting auto-adjust **ALT** +

Highlight/shadow tools

Set highlight white triangle

Set midtone pipette

Set shadow black triangle

Multiple attempts with a tool hold down **ALT**

Reset highlight / shadow **ALT** +

Display brightest point **CONTROL** + **SHIFT**

Display darkest point **CONTROL**

Histogram

Show result histogram **ALT** in histogram dialog

Selective colour correction

Select all colours **CONTROL** + **A**
Select colour in prescan **SHIFT** + click on prescan
Select additional colourclick on LED

Reset

Reset all parameters **SHIFT** + click on "Option" button
Frame reset **ALT** + click on "Option" button
Delete a presethold down **SHIFT** + click once with mouse pointer on a preset's name
Undo / redo last operation **CONTROL** + **Z**

Opening a dialog window

Zoom in preview **CONTROL** + **ALT** + **1**
Image auto adjust **CONTROL** + **ALT** + **2**
Histogram dialog **CONTROL** + **ALT** + **3**
Gradation dialog **CONTROL** + **ALT** + **4**
Global correction **CONTROL** + **ALT** + **5**
Selective colour correction **CONTROL** + **ALT** + **6**
Expert dialog **CONTROL** + **ALT** + **8**
Leave dialog **ESC**
Start scan **RETURN**
Undo/Redo last operation **CONTROL** + **Z**
Show scan resolution **CONTROL**
Show resulting interpolated resolution **CONTROL** + **SHIFT**