

reflecta® & SilverFast® 8

a perfect Team!



More Possibilities. More Functionality. More Quality.

For best results in digitizing images, you should use an ideal combination of excellent hardware and optimally adjusted software. With reflecta scanners and the award-winning SilverFast software, you will be working with the best system you can get.

SilverFast 8 has been individually optimized for every supported scanner's hardware. Therefore, the specific characteristics of each single model can be taken into account, which leads to maximum quality with every device. Many international awards have earned SilverFast's reputation of being the world's best scanner and imaging software. Although SilverFast has been developed specifically for professional use, the handling is easy. Even beginners can create close to perfect images. Embedded QuickTime movies, the innovative WorkflowPilot and intelligent Auto Adjust features are a big help for getting started.

SilverFast 8 is available in three different versions to accommodate the user's needs and level of experience.

SilverFast SE 8 is our entry version for professional scanning.

SilverFast SE Plus 8 features extended functionality for advanced users, like the unique SilverFast Multi-Exposure®.

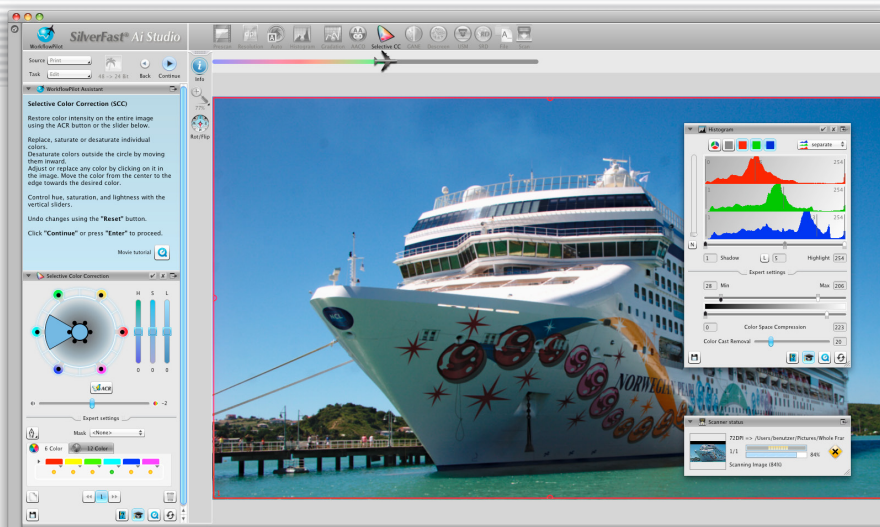
SilverFast Ai Studio 8 fulfills the highest demands – it is our absolute top-level version including IT8 scanner calibration and all the bells and whistles.

Many reflecta scanners are available with SilverFast from factory. When purchasing this combination of hard- and software you will save money (compared to single purchases).

You will find SilverFast for your reflecta scanner, SilverFast software upgrades and IT8 targets for scanner calibration at www.SilverFast.com.

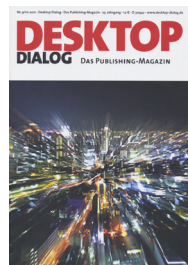


Link to SilverFast 8 introduction movie



« Easy handling and results in professional quality are two of the main reasons for the popularity of this software in the various areas of application. »

Desktop Dialog



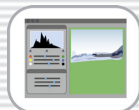
SilverFast 8 - The new Dimension of Scanning

LaserSoft Imaging has gained 25 years experience in the development of imaging software. The new version 8 of SilverFast has built on this wealth of experience. The combination of various innovative ideas and the integration of current software technology has created SilverFast 8 – a completely new dimension of scanning.



The **WorkflowPilot** is an essential core element of SilverFast 8. This novel feature, which guides the

user as a kind of wizard in the correct order through all processing steps required for his individual workflow, is unique in the world. Depending on which material should be digitized for what purpose, there is a different workflow that will be worked on step by step.



The **user interface** of SilverFast 8 is newly developed by current standards. All major functions can be

operated quickly and easily. The interface also offers the possibility to flexibly arrange the control elements anywhere on the screen to fit personal preferences easily by dragging and dropping using the mouse. This proves especially useful when working with two monitors. In WorkflowPilot mode, the required dialogs automatically open in the foreground.

Using SilverFast Ai Studio 8 and a reflecta DigitDia series scanner, an outstanding productivity is achievable. You can automatically digitize complete magazines of 50 or even 100 slides.



For digitizing a large archives of slides, it is a good idea to scan directly in SilverFast's **64bit HDRi**

RAW data format. Your scanner delivers RAW data through SilverFast which contain **all readable image information**, and now even contain the **image data from the infrared channel**. This file can then be used for further image optimization, regardless of where and when you choose to work on it! To take advantage of the full 64-bit data range, it is necessary to use optional image editing

software SilverFast HDR / HDR Studio, also included in SilverFast Archive Suite.

Using Multi-Exposure, you are on the safe side regarding your images' quality by enabling your scanner to capture the most possible amount of image details.



Anyone working with Kodachrome scans without adjusting the scanner to the special film material

properly knows the problem of the unsightly bluecast. By implementing improved Kodachrome routines into SilverFast version 8 (SE Plus & Ai Studio) it's finally possible to achieve high-quality scans of Kodachrome slides with the highest possible Dynamic Range, color calibrated and free of bluecast, dust and scratches. LaserSoft Imaging is offering special Kodachrome targets for a scanner calibration to achieve optimum results.

Fastest Image Digitization into 64bit RAW Files with SilverFast® Ai Studio 8

Auto IT8 Calibration

Auto Frame Detection

iSRD® - infrared Dust and Scratch Removal

SilverFast Multi-Exposure® maximizing Dynamic Range

Batch Scan into 64bit HDRi/ 48bit HDR Format

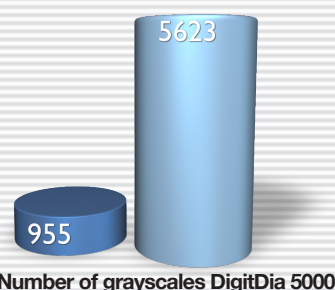
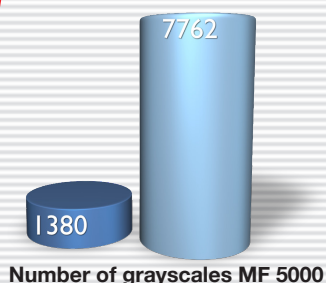


« SilverFast Ai Studio 8: Breathe new life into your old film images by using powerful next-generation scanning software. »

Outdoor Photographer

« With the WorkflowPilot, scanner software SilverFast provides an expedient tool, that supports achieving good results really quickly. Manual controls and intelligent methods such as Multi-Exposure get the most out of any original. »

digit!



Dynamic Range (ISO 21550)
without and with Multi-Exposure
and the resulting increase of the
number of captured grayscales



More information on the
Multi-Exposure website

SilverFast 8 – Maximize Your Scanner's Dynamic Range

The Dynamic Range of each stage (capturing, scanning, editing and archiving) plays a crucial role in the quality of the results. In general, technologies with greater Dynamic Range produce significantly better results.

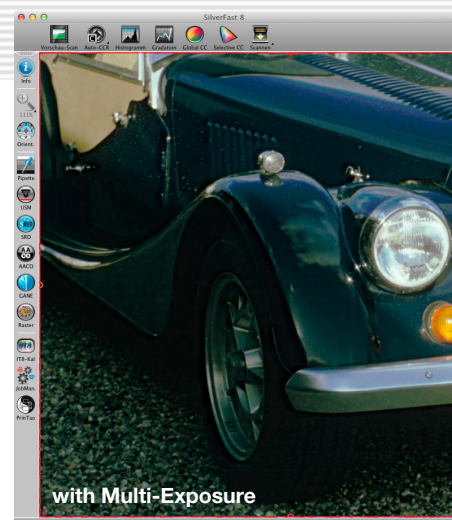
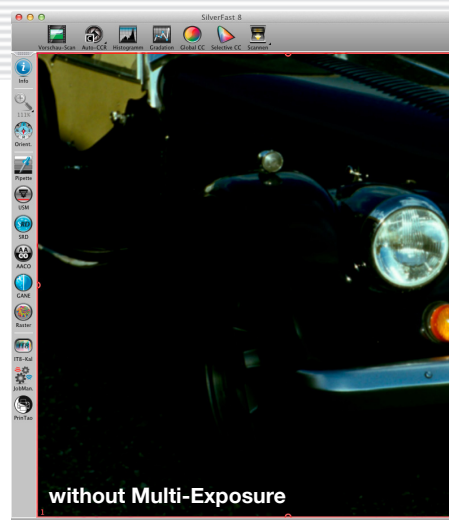
SilverFast Multi-Exposure records an original's maximum Dynamic Range by performing a double scan with a longer exposure time of the second scan. This procedure captures the highlights of the image in the first pass, and the details in the shadows during the second pass. Afterwards an algorithm calculates the final scan, which now contains all details from both scans. (LaserSoft Imaging Patent with Auto-Alignment, Patent-Nr.: EP 1744278).

The emulsions of black-and-white, color negative and slide film are composed of several layers. Therefore, film material usually has a very high Dynamic Range. In fact, an ordinary slide film offers a contrast

range of 8 f-stops. A well-exposed negative film can have a range of even up to 12 f-stops. Depending on the effective Dynamic Range of the scanner, only a part of this image information is captured by the device. **SilverFast greatly increases the Dynamic Range of the hardware and thus enables to capture more image details in highlights and shadows.** This growth in Dynamic Range has been measured and verified by several independent imaging institutes (ISO norm 21550).

The adjacent diagrams illustrate the increase of the Dynamic Range using Multi-Exposure. The number of captured grayscales has increased to a level, which is normally only achieved with very expensive high-end drum scanners.

An additional Multi-Exposure highlight: By scanning the original twice, **the image noise**, which often appears specially in the darker image areas, **is visibly reduced**. Multi-Exposure is a feature of SilverFast SE Plus 8 and Ai Studio 8.



« SilverFast 8 mainly scores with its new architecture and with improved handling compared to its predecessor. [...] The increased speed, for the first time really benefitting from the power of actual processors, is a definite plus. »

heise Foto

Auto IT8 Calibration



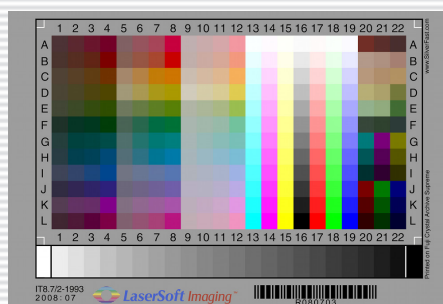
Consistent colors and color management are still a certain mystery for professionals and even more for consumers. With SilverFast, professionals as well as consumers **benefit from the highly added value of consistent colors**, while being able to neglect the sophisticated process behind it.



Two single mouse clicks, nothing more is needed to automatically calibrate your scanner and to calculate a unique ICC profile with the professional and patented IT8 Calibration. Predictable and reproducible colors of the imaging material – starting with the scan – are basic conditions of every imaging workflow.

IT8 Targets

When choosing your IT8 targets, you really should consider the original LaserSoft Imaging targets. Only these have the **world-wide unique barcode technology, which allows a fully automatic calibration**. In addition, independent testing institutes confirm superior quality of LaserSoft Imaging's own production.



Auto Adjust



SilverFast has an excellent automatic image optimization tool. Depending on the lighting conditions at the time of exposure, it has to **correctly optimize the images in terms of highlights, shadows and midtones**. Thus, for every image is to decide whether color casts must be removed. A reddish color cast for example should remain, if it was caused by the long-wave sunlight in a sunset scene. In this case, just select „evening“ as the image type and SilverFast performs the correct optimization. A „fine-tuning“ is possible at any time using gradation curve and histogram.

NegaFix



SilverFast NegaFix® offers a convenient and professional way to **convert your negatives into brilliant positives**. You can choose a profile specific to your film from more than 120 available film profiles, which take the manufacturer, the exact film type and the film's photoresponse into account. With additional sliders you can adjust several parameters such as the exposure; in the SilverFast Ai Studio 8 expert mode you can alter any alignment in great detail for achieving optimum results. SilverFast's NegaFix guarantees a **unique control when converting negatives to positives**. The color cast removal tool CCR even removes color casts that are on the original.

