

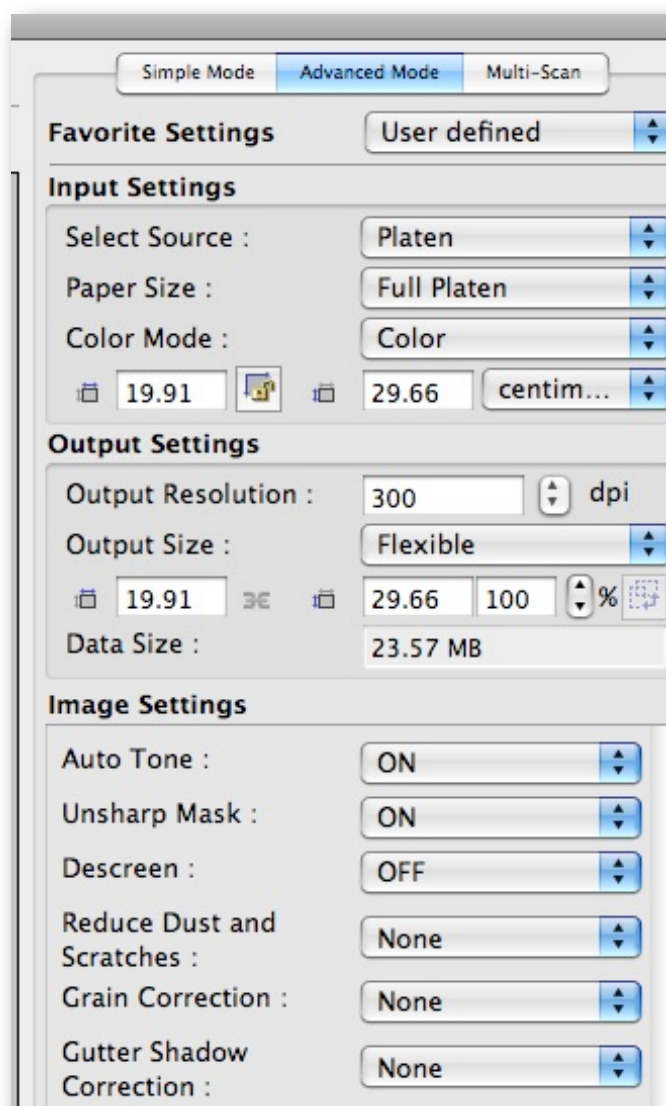
## CANON SCANGEAR AND LSI SILVERFAST: QUICK FEATURES COMPARISON

*Agostino Maiello, January 2009*

### Canon ScanGear

Canon ScanGear is a quick, easy-to-use software solution bundled with Canon scanners. ScanGear allows users to scan reflective images without requiring a deep knowledge of the digital imaging techniques.

The user-interface is simple and offers a standard set of features and tools. It is possible to work in an Advanced Mode, which has more features and thus offers the user a higher level of control of the scanning process.

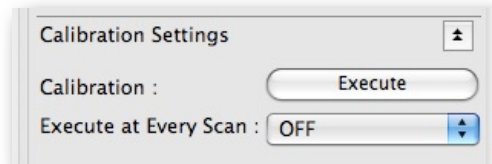


As seen in the screenshot, it is possible to select the source of the image (Platen or Color/Monochrome negative or positive film), the color mode (Color, Grayscale, Black and White) and size. The Output Settings section defines the size and the resolution of the processed image.

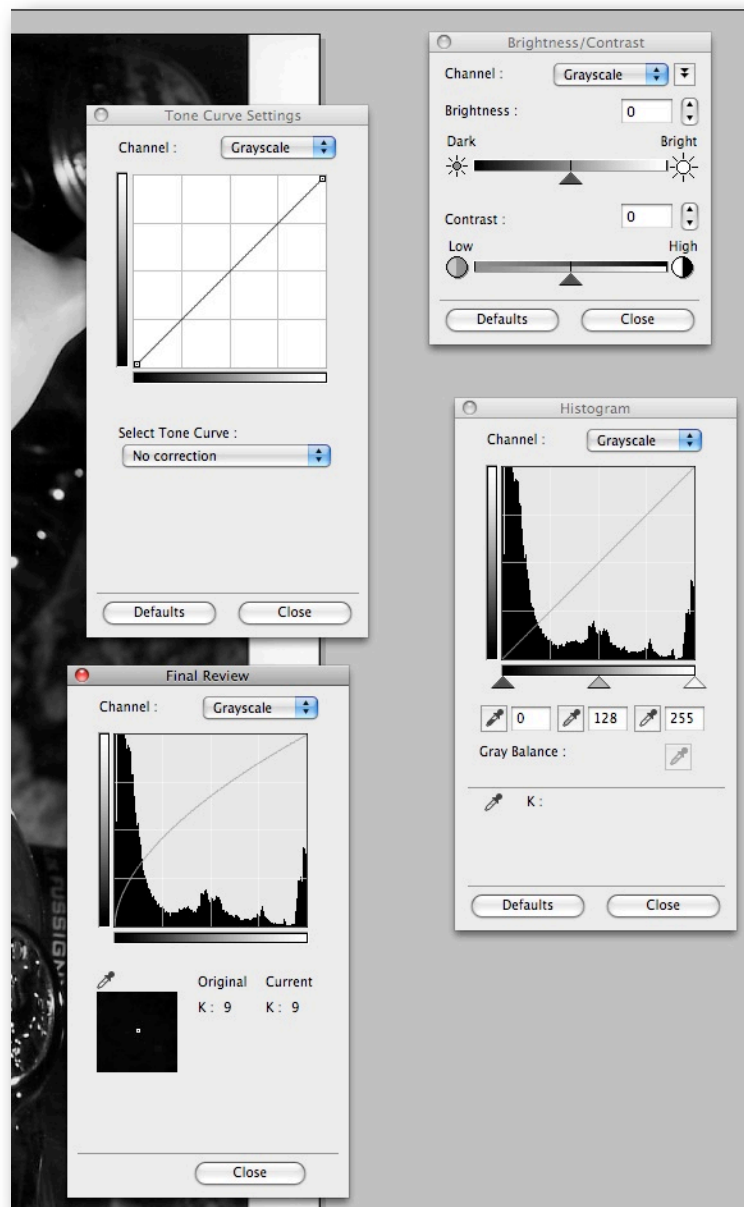
The next six commands allow the user to decide whether to apply some adjustments like AutoTone, Unsharp Mask, etc to the image. The first three are ON/OFF switches, whereas the last three have additional options such as Off/Low/Medium/High.

Rotation and cropping of the scanned image is possible by buttons in the upper left corner of the interface.

A calibration button is located at the bottom of the user interface. This is a completely automated process: the user only clicks the button and then waits for the scanner to perform its internal calibration.

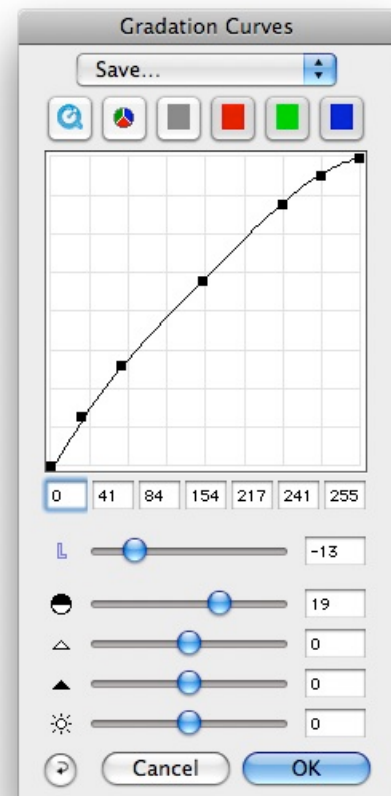
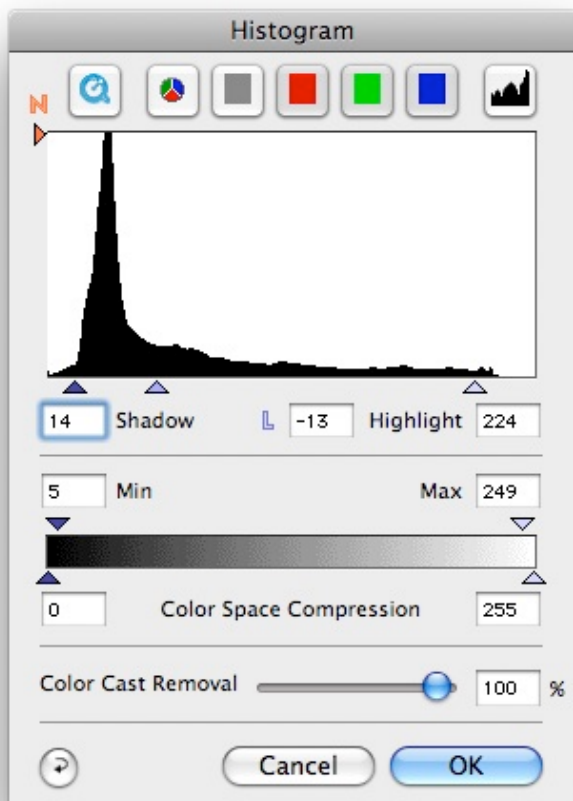


When processing grayscale images, it is possible to apply additional adjustments such as brightness, contrast, curves and levels:



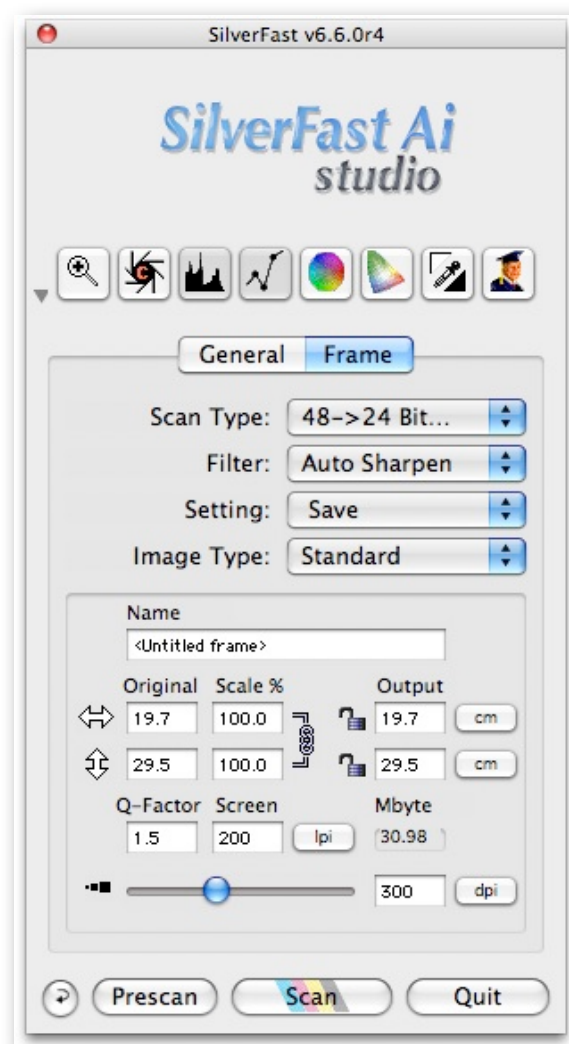
The MultiScan function allows the user to scan more than one image, by simply placing them on the scanner – every detected image will produce an individual output file within Photoshop.



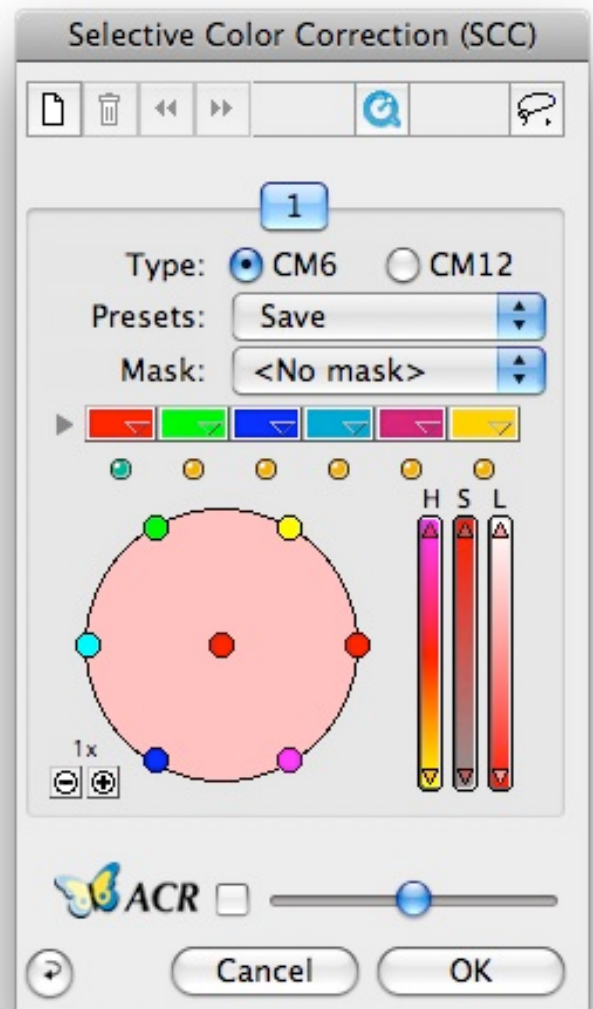
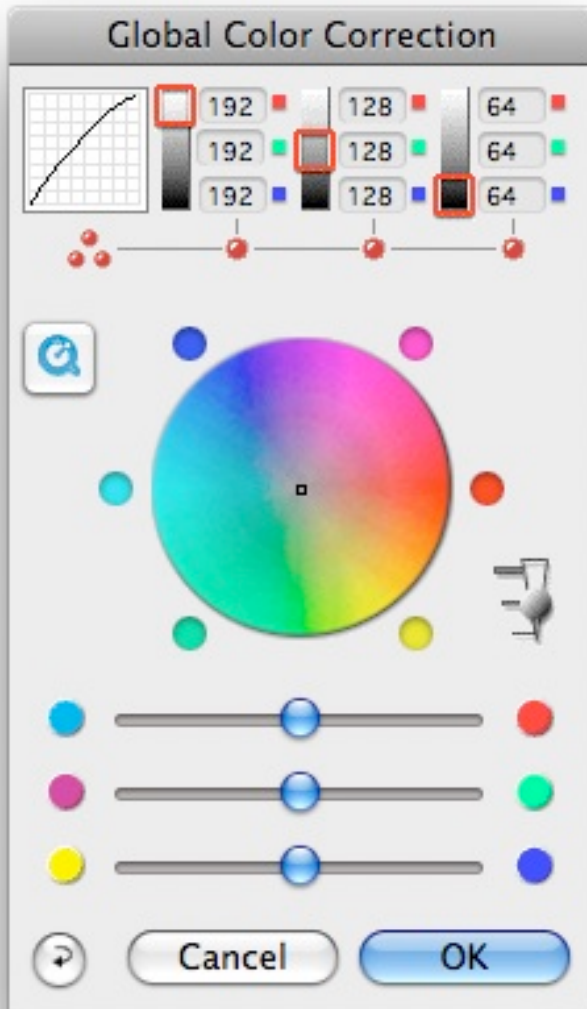


Performing these adjustments on the Preview itself allows the user to see the final result and all corrections in real time – SilverFast always offers predictable results.

The left panel incorporates the standard commands for the input and output parameters:

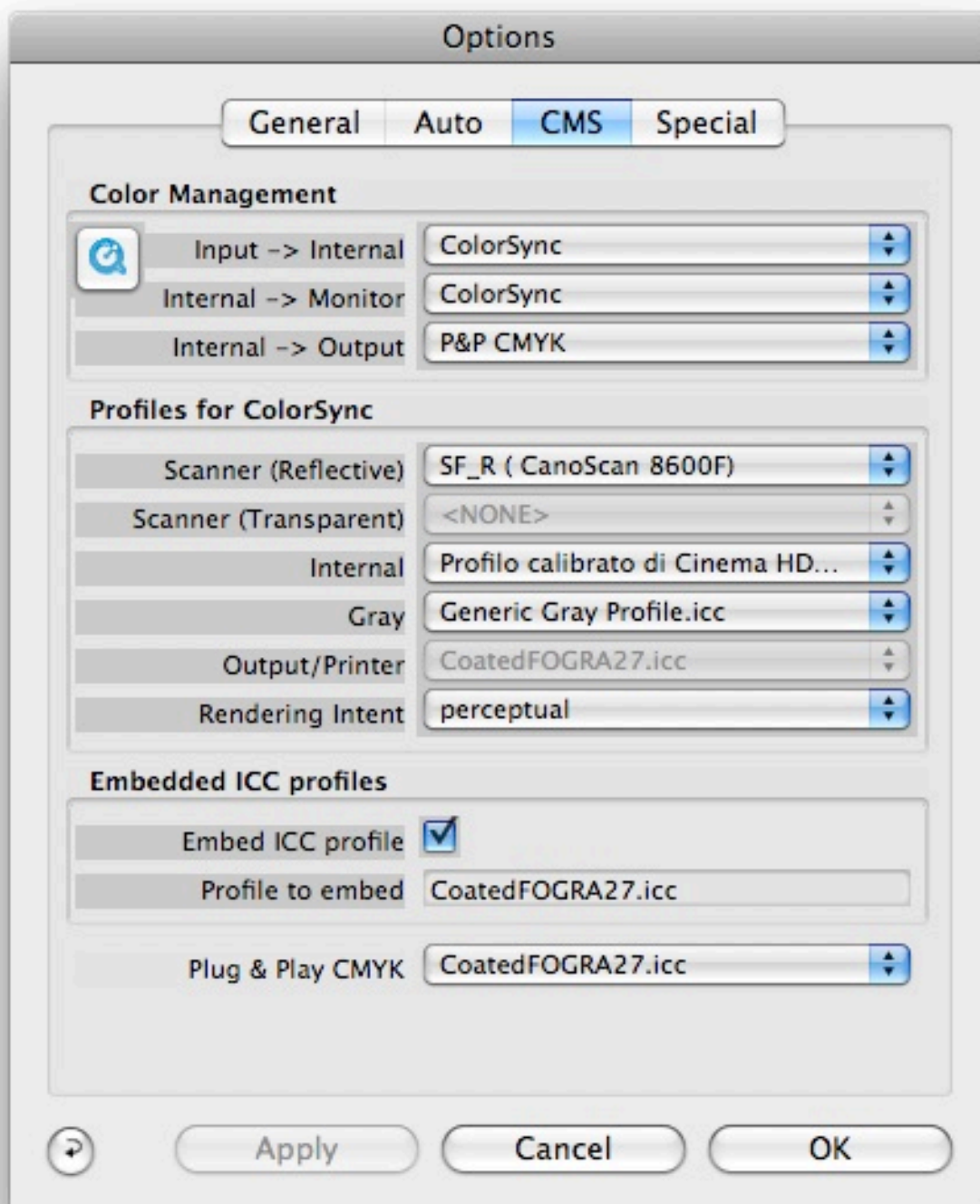


A global or a selective color correction allows the fine tuning and alteration of colors.



The color management settings can be found within the CMS dialog under the Options menu. Here, the user has complete control over profiles, color spaces and separation tables; ideally, the entire system has been profiled (i.e. scanner, monitor and printer):





## Conclusion

It is clear that the functionality of SilverFast Ai is much more professional while still being relatively easy to use.

This comparison shows clearly that, although Canon's ScanGear is a valid, fast and easy software for basic scanning, SilverFast Ai offers much more professional functionality - from a basic and automated scan to a complex and fine-tuned professional result.