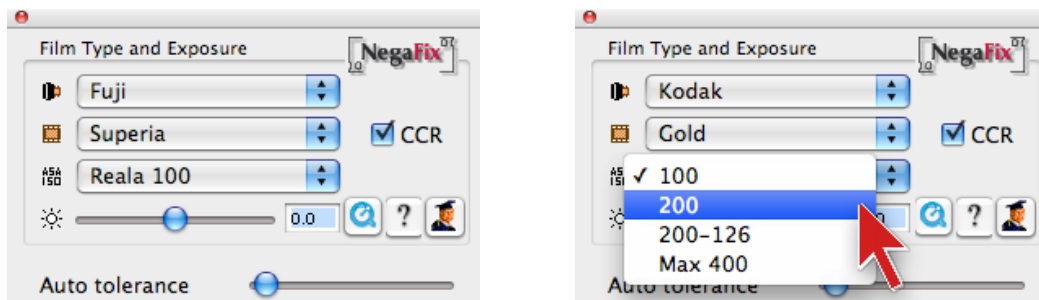
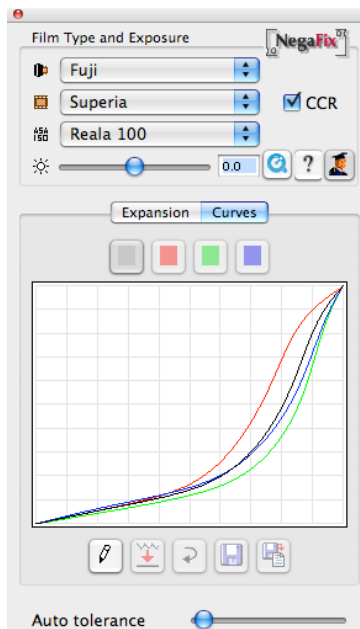


Advantage of SilverFast NegaFix versus processing negative film data in Photoshop

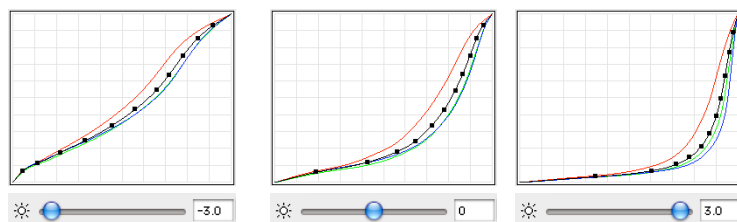
SilverFast has more than **120 different Negative film profiles**. Manufacturer, Film-Type, Film-Speed and Film-Exposure can be selected.



For each Scanner model NegaFix profiles are individually created with a dedicated process.



NegaFix film profiles contain specific calibration for normal, over- and underexposed film.



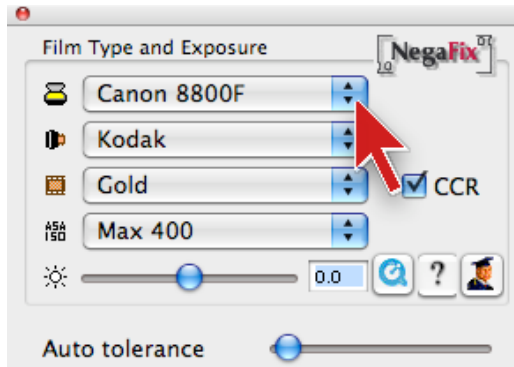
NegaFix Curves with Control Points for over, normal, under exposed

The NegaFix Expert Dialog allows adjusting existing curves as well as creating custom NegaFix Profiles.

Since the negative film process is not a standard process, quite some deviation from different exposure and different (non-standard) film development have to be considered. This means even if the correct NegaFix profile is there, the development and exposure for the same type of negative film can significantly vary and produce a cast.

Therefore comfortable fine tuning of NegaFix curves and intelligent auto- in SilverFast is a must for counteracting the varying behaviour of negative film.

With **SilverFast HDR** customers can initially scan negative film into full 48 bit HDR format without negative conversion. SilverFast HDR can then use the digital negative and apply NegaFix profiles by selecting the scanner model and the appropriate NegaFix profile. The full NegaFix functionality with Expert mode is available in SilverFast HDR.



In SilverFast HDR the scanner model, film manufacturer, film type and film speed can be selected.

For very large files SilverFast Ai puts HiRePP- functionality into the HDR file, so SilverFast HDR opens any large file without delay.

Conclusion:

SilverFast NegaFix is the most efficient and safe way to get the best possible quality from any negative film.

Using Photoshop for negative film conversion would demand an expert with a lot of experience and ability to create those curves required. Those curves would have to be individually different for each scanner model, each film type and even each exposure situation.

Consequently the process of negative film conversion would take substantially more time with Photoshop than with SilverFast NegaFix and it is obvious any normal user could not handle the complex process in Photoshop.

More info on NegaFix:

<http://www.silverfast.com/show/negafixguide/en.html>

<http://www.silverfast.com/show/negafix/en.html>

<http://www.silverfast.com/show/negafixprofiles/en.html>

http://shutterbug.com/equipmentreviews/software_computers/1201sb_negafix/

http://homepage.mac.com/ilyons/pdf/sf6_negafix.pdf

<http://www.russellcottrell.com/photo/SilverFast/index.html>