

## Archiving Transparencies with the Expression 12000XL

The Epson Expression 12000XL is designed as a large format scanner for graphic arts scanning. In addition, an optional transparency unit turns it into an archiving solution for slides, negatives and filmstrips as well. Using different film holders, the 12000XL batch scans up to forty-eight 35mm negatives, thirty 35mm slides, eight 4x5" transparencies or six medium-format transparencies.

### Workflow for archiving 35mm slides as 48bit HDR RAW data

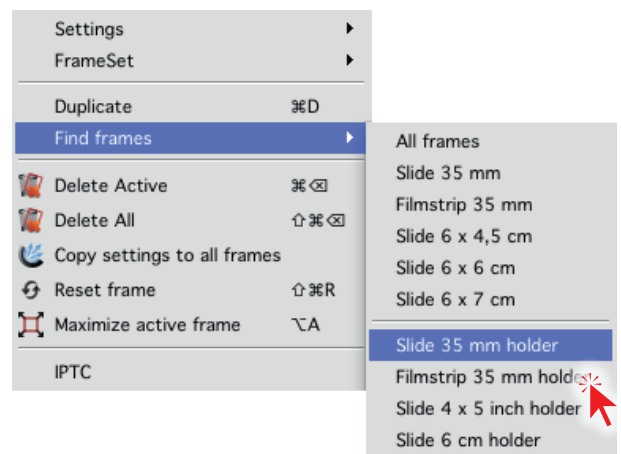
SilverFast's 48bit HDR archive file format contains any readable image information. This RAW format is the best choice to preserve and archive film material. Image optimization and processing can be done any time later with SilverFast HDR Studio 8. For maximum Dynamic Range, SilverFast Multi-Exposure\* can be activated.

Up to 30 slides find place on the flatbed using two Epson film holders. An initial color calibration is recommended.

After a Prescan is performed, SilverFast's automatic Frame Detection\* can be used to detect and frame all slides, just with a single click.

With all slides framed, the next step is to select a single frame, to adjust a few settings and to copy these settings to all frames.

\* only included with optional Ai Studio 8/ Archive Suite 8 upgrade



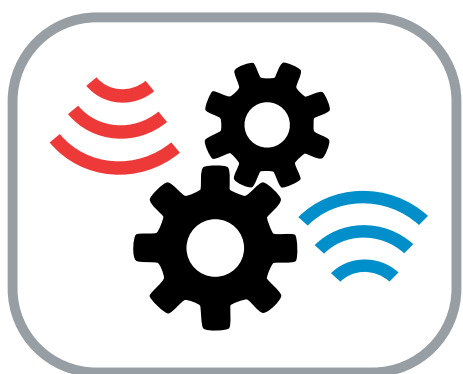
## Archiving Transparencies with the Expression 12000XL

For archiving HDR RAW data, select « 48 Bit HDR » as output color format. Select « 16 Bit HDR » for scanning grayscale transparencies. Image optimization tools and filters, like Selective Color Correction or Unsharp Masking, are now shown grayed out and cannot be activated. Image optimization is done later with SilverFast HDR Studio 8.



AF off

Make sure the Focus Control is set to « AF off » to speed up scanning. The focus already has been set correctly with selecting the 35mm slide holder.

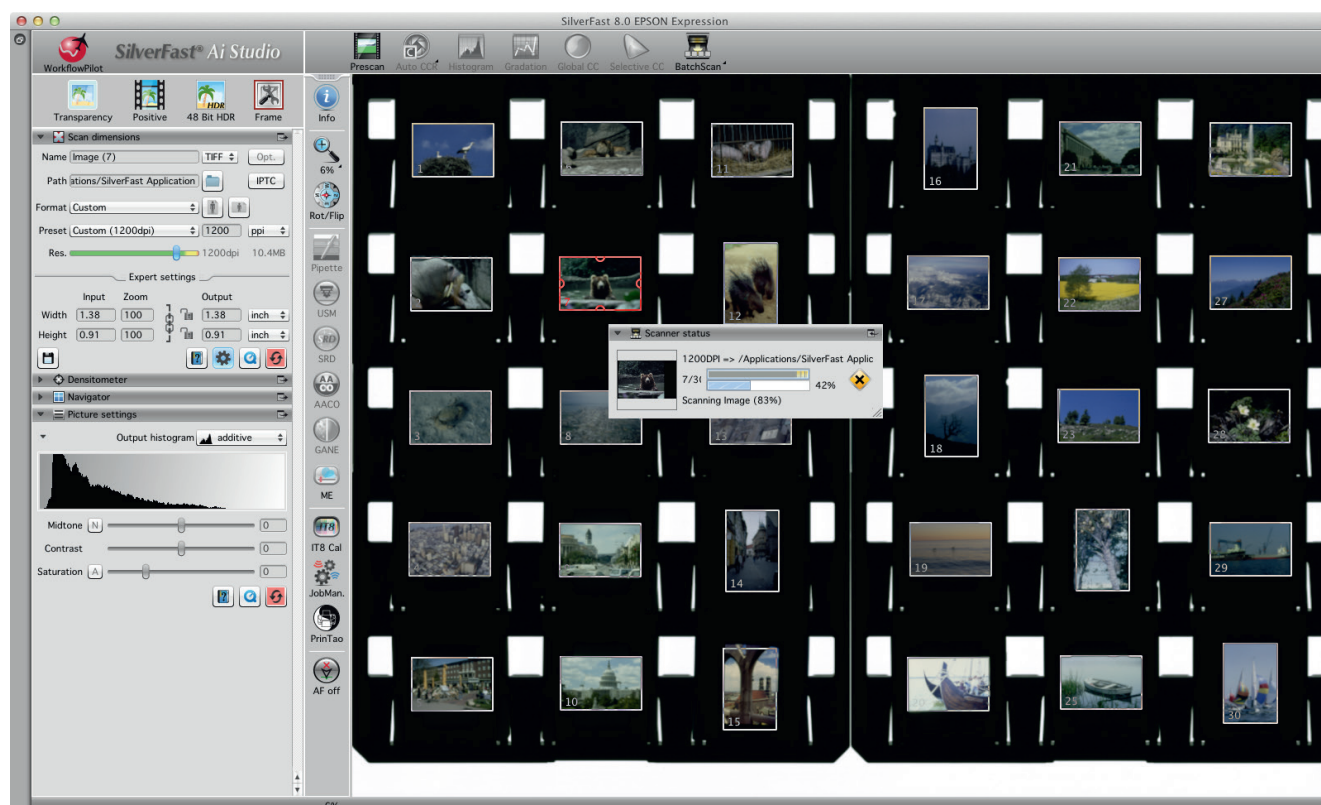
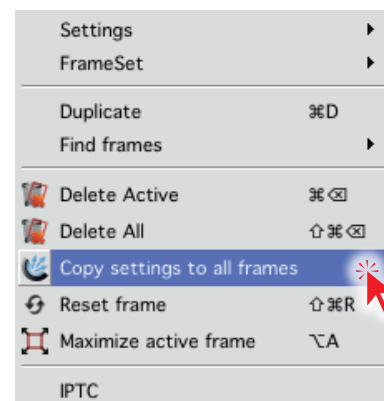
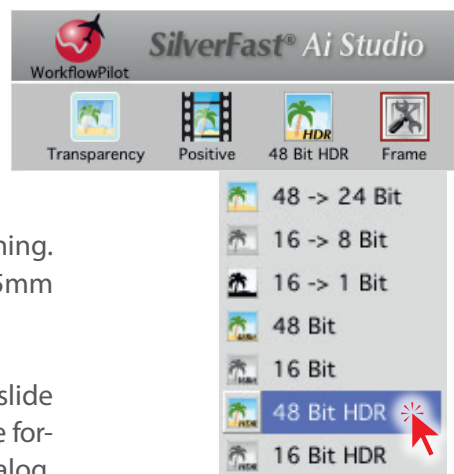


Adjust basic settings for your slide like file name, resolution and file format in « Scan dimensions » dialog.

Open the « Frame » menu and click on « Copy settings to all frames » to assign this frame's settings to all scan frames.

Start the batch scan and SilverFast will create individual 48bit HDR files for all slides on the flatbed. This is the most easiest way to protect

analog image collections against loss or destruction. Image optimization can be done later depending on individual needs.



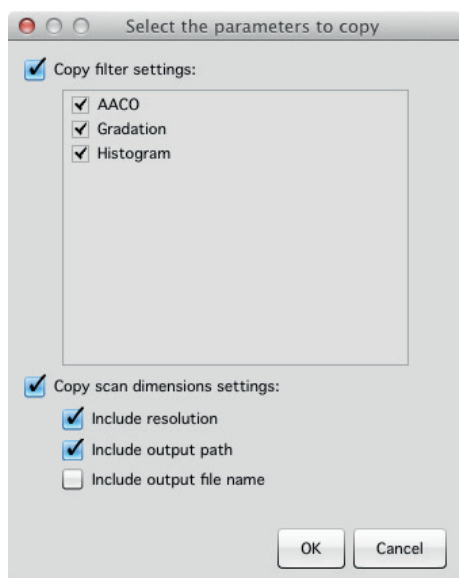
## Archiving Transparencies with the Expression 12000XL

### Workflow for batch scanning and optimizing 35mm slides



The SilverFast JobManager® is the perfect tool for optimizing images immediately within the batch scanning process. Like for the RAW data archiving workflow, a color calibration can be done first. A following Prescan shows an overview of the flatbed and SilverFast's automatic Frame Detection detects and frames all slides.

Every scan frame, also referred to as a job, can have its individual resolution and image optimization settings. The JobManager shows a list of all jobs containing preview thumbnails, file names and other basic information. Single jobs or complete job lists can be saved and reopened later on.



A main feature, making it so comfortable and efficient to work with the JobManager, is its possibility to copy and paste frame settings from one job to another, or to several other jobs. If images are similar in tone, the same modifications on histogram and gradation curve may apply. Thus, a lot of time can be saved by adjusting settings just once, but applying them to many images. The user can thereby determine, which image optimization settings he wants to be copied to other jobs, selecting all or just some of the active SilverFast tools.

