

## SilverFast SRDx - Dust and Scratch Removal of a new Generation

SilverFast's reliable Dust and Scratch Removal now available for the Epson Expression 11000XL. As the 11000XL does not feature an infrared channel, our proven iSRD technology, which utilizes a scanner's infrared scan to detect scratches and other artifacts, can not be applied. But now there is a remedy:

SRDx features entirely new algorithms to detect and accurately remove defects like dust particles and scratches on color film, negatives and now, for the first time, black and white film, and photographs as well. Scanners which do not support the infrared channel can take advantage of this new technology.

### SRDx - non-infrared Dust and Scratch Removal

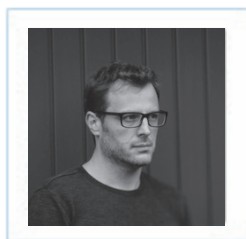


Photos, slides and negatives are naturally afflicted with image defects. Even if photos and slides are handled very carefully, it's virtually impossible to avoid contact with dust particles; small scratches are also not uncommon. Greater defects on treasured images can be especially annoying, because they often hide important details or even destroy the overall image. These flaws do not often get recognized until scanning, because scanning means also increasing image size in most cases. SRDx is the efficient solution for the elimination of all these flaws.



The Original Image  
including Scratches

with SilverFast SRDx  
Dust and Scratch Removal



*« I found that SilverFast is very good in detail reproduction and in the latest version, you can even have dust and spot removal for black and white film (ICE technology is not working with silver based film) using their latest SRDx technology. »*

**Sebastian Schlüter, professional photographer**

Learn more about the details of SRDx  
and how to use it inside the software::



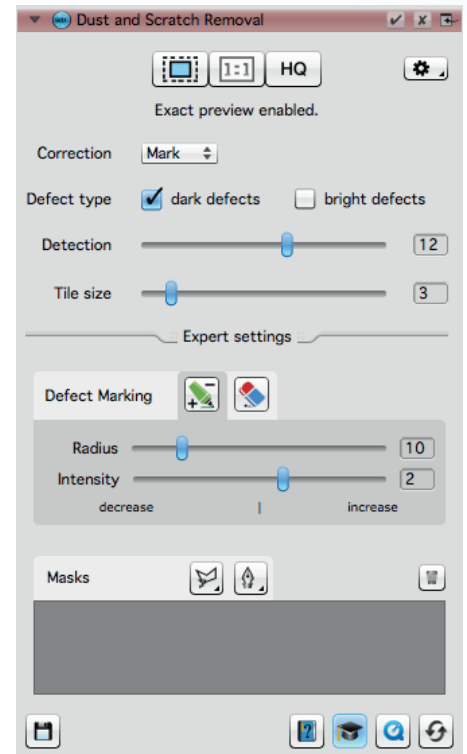
**Watch Movie >>**

## How is SilverFast SRDx working?



The algorithms used in SRDx for defect detection can recognize dust and scratches because their image information differs greatly from the surrounding. Furthermore, the algorithm has been programmed to recognize typical scratch marks (elongate and narrow) particularly good. Detected flaws can be removed by calculations taking the surrounding image information into account. Other software for removing dust and scratches usually use a focus blur, which deteriorates general image quality.

Using the image processing software SilverFast HDR and HDR Studio and SRDx you can free previously scanned images (also RAW data) from defects. You can also load and optimize digital images, for example from a digital camera. Many options to adjust the SRDx tool with simultaneous optical checking offer a reliable technique for removing any defects without destroying image details.



- Slider control for intensity of detection and correction
- The preview window shows identified defects marked in red
- 1:1 and HQ preview for exact evaluating

## Special Tools in Expert Mode

The expert mode (only in Ai Studio, HDR Studio and the Archive Suite) offers additional functionality, which help to mark the defects to be corrected. With the Pen Tool, the correction intensity of individual image details can be selectively reduced or strengthened. The Eraser Tool is used to specify image areas, where no correction should be applied at all.

- Marker Tool decreasing and increasing intensity
- Eraser Tool for protecting important image areas
- Setup masks for using different correction effects

