

# ArtixScan® M1



## *The New Film Scanner for Professional Photographers*

From Microtek – the leader in scanner design – comes a new generation of flatbed scanners that delivers the film scanning capability of dedicated film scanners while maintaining outstanding reflective scanning capability. With new improvements in the electronic design, optical design, and mechanical design of the scanner, which have delivered outstanding technical specifications, the ArtixScan M1 is the premier scanner for professional photographers who demand the very best.

**MICROTEK**

## ● Seeing Clearly

Every imaging professional knows that the chances for optical distortion increase as light passes through more layers of glass. With this in mind, Microtek developed Emulsion Direct Imaging Technology (E.D.I.T.) for flatbed scanners. The unique E.D.I.T. design is a patented “glassless” scanning system, built into the lower bay of the ArtixScan M1, which enables film scanning without supporting the film on glass. This emulsion direct approach is similar to dedicated film scanners and avoids all the issues, such as Newton Rings and surface imperfections, that are related to scanning film through a glass support. The E.D.I.T. design delivers outstanding image clarity from this high resolution scanner.



## ● It's a Snap

The ArtixScan M1 includes SnapTrans Film Templates in four conventional transparent media sizes: 35mm filmstrip, 35mm mounted slide or super slide, 6cm film and 4x5 inch film. These templates are used in the lower scanning bay for glassless scanning and offer incredible ease in film handling. The 4x5 inch and medium-format 6cm film holders are specially designed with spring-actuated tension grips that firmly hold the film perfectly flat, yielding sharper image quality across the entire image. For even greater versatility, an 8 x 10 inch holder is also included for scanning unusual film sizes where the film is supported from below by high-quality glass but scanned from above the glass.



## ● Focal Point

Scanning at high resolution lowers the depth of field in the imaging system, which makes accurate film position essential for obtaining a sharp scan. Recognizing that precision focus is an integral part of the meticulous optical design, Microtek developed a totally new auto-focus feature to make sure the scanner captures all the detail in the film. This unique auto-focus feature combined with a custom-designed extra-low-dispersion lens puts the ArtixScan M1 at the top of its class for image quality.

## ● Speed Scanning

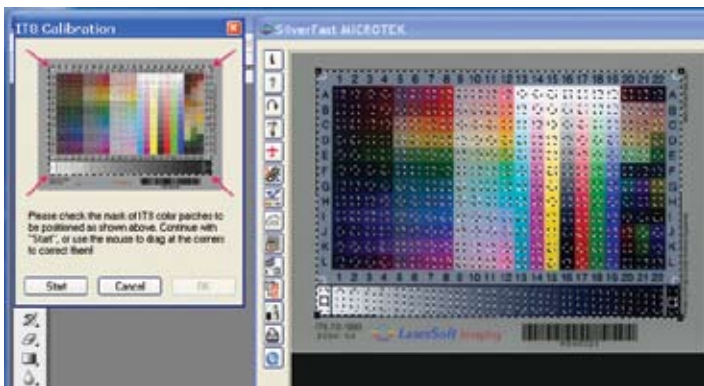
The ArtixScan M1 has a totally new circuit board design that speeds up data processing and delivers much shorter scan times. Parallel, two-stage pixel processing and a 64-bit virtual image bus are key features in the new design that dramatically improve scan speeds. All the improvements are designed to support the high bandwidth of High-Speed USB 2.0 connectivity to deliver large image files to your computer as quickly as possible. The ArtixScan M1 is now the fastest scanner in Microtek's family of flatbed scanners.

## ArtixScan M1 Pro – Higher Productivity for Professional Photographers

The ArtixScan M1 Pro builds on the outstanding capabilities of the ArtixScan M1 and adds additional features to provide greater productivity with this best-in-class dual-media scanner.

### ● SilverFast Ai Studio software from LaserSoft Imaging AG

SilverFast Ai Studio is the full-featured, top-of-the-line scanning software from LaserSoft Imaging. SilverFast has long been the preferred choice of scanning software among professional photographers, and the new features in SilverFast Ai Studio are valuable tools that deliver higher productivity while maintaining outstanding image quality control.



### ● SilverFast AutoIT8 Color Calibration

Implementing color calibration in the scanning workflow is essential in order to achieve the best color accuracy and repeatability in scanned images. LaserSoft Imaging recently introduced a new feature, based on patented barcode technology, which makes the color calibration process in SilverFast much easier. This new feature, called AutoIT8 Calibration, uses industry standard IT8 targets from LaserSoft Imaging that have a barcode imprinted on the target. The SilverFast software reads and uses the information in the barcode to automatically select and match the correct reference file to the scanned data. The SilverFast AutoIT8 Calibration feature is just one of the higher productivity features of the ArtixScan M1 Pro.

### ● SilverFast Multi-Exposure

High Dynamic Range (HDR) imaging has been a challenging goal for photographers and the companies that develop the tools that photographers use. Simply put, HDR imaging captures the full tonal range in an image without loss of detail in highlights, midtones, or shadows. LaserSoft Imaging developed and implemented Multi-Exposure in SilverFast to enable HDR imaging with scanners to capture the full tonal range in photographic film. The combination of Multi-Exposure in SilverFast with the high dynamic range of the ArtixScan M1 delivers unbeatable image clarity that captures the full tonal range and every detail held in the film.



### ● Two Sets of SnapTrans Film Holders

For photographers who have an abundance of images on film, the ArtixScan M1 Pro comes with two sets of SnapTrans film holders. While one set of film is loaded and the scanner is running in batch-scan mode, you can select and load another set of film in the second film holder. Having the second set of film holders eliminates the down time associated with unloading, selecting, and loading film between batch scans.

## Scanner Features

<b>Part Number</b>	1108-03-680102 ArtixScan M1 1108-03-680101 ArtixScan M1 Pro
<b>Scanner Type</b>	Single-pass, dual-platen color flatbed scanner
<b>Optical Resolution</b>	4800 x 9600 dpi
<b>Optical Density</b>	4.4 maximum optical density
<b>Original Type &amp; Scanning Area</b>	Reflective originals up to 8.5" x 14" Transparent originals up to 8.5" x 10" positive, negative, color or monochrome
<b>Batch Scanning</b>	35mm slides up to 12 frames 35mm filmstrip up to 24 frames 4 x 5 inch film up to 2 frames
	<b>6cm (120, 220) film</b> 6 x 4.5 cm up to 4 frames 6 x 6 cm up to 3 frames 6 x 7 cm up to 3 frames 6 x 9 cm up to 2 frames 6 x 17 cm 1 frame
<b>Focus</b>	Auto focus (user selectable: on/off)
<b>Exposure</b>	Auto and manual exposure control
<b>Photo Restoration</b>	ColorRescue™ color restoration for photos and film when using ScanWizard Pro
<b>Color Management</b>	Kodak Digital Science™ color management built into ScanWizard Pro software Compatible with standard ICC profiles and includes over 140 profiles Apple ColorSync® and Microsoft ICM compatible
<b>A/D Conversion</b>	16 bits per color channel
<b>Output Data</b>	16-bits or 8-bits per channel (user selectable)
<b>Multiple Sampling</b>	2, 4, 8, 16 times (user selectable)
<b>Interface</b>	Hi-Speed USB (2.0)
<b>Driver</b>	TWAIN
<b>Warranty</b>	Standard one year limited warranty

## Package Contents

<b>ArtixScan M1</b>	ArtixScan® M1 scanner; one set of SnapTrans™ film templates for 35mm mounted slide, 35mm filmstrip, 4"x5" film, and 6cm film; main staging tray for film templates; glass tray; Hi-Speed USB 2.0 cable; power cord; Microtek® ScanWizard™ Pro; Kodak transmissive and reflective IT8 targets; LaserSoft Imaging™ SilverFast® SE Plus; Adobe® Photoshop® Elements; ABBYY FineReader Sprint; and Adobe® Acrobat® Reader.
<b>ArtixScan M1 Pro</b>	ArtixScan® M1 scanner; two sets of SnapTrans™ film templates for 35mm mounted slide, 35mm filmstrip, 4"x5" film, and 6cm film; main staging tray for film templates; glass tray; Hi-Speed USB 2.0 cable; power cord; Microtek® ScanWizard™ Pro; Kodak transmissive and reflective IT8 targets; LaserSoft Imaging™ SilverFast® Ai Studio with LaserSoft Imaging transmissive and reflective IT8 targets; Adobe® Photoshop® Elements; ABBYY FineReader Sprint; and Adobe® Acrobat® Reader.

## Technical Specifications

<b>Dimensions (L x W x H)</b>	22.3" x 15.2" x 6.12" (567mm x 385mm x 157mm)
<b>Weight</b>	26.4 lbs (12 kg)
<b>Image Sensor</b>	Sony CCD
<b>Light Source</b>	Cold cathode fluorescent lamp
<b>Optics</b>	Proprietary, custom-designed lens with anti-reflective coating
<b>Voltage</b>	AC 100 to 240 volts, 47 to 63 HZ
<b>Power Consumption</b>	35 Watts
<b>Power Supply</b>	Auto-switching universal power supply
<b>Environment</b>	Operating Temperature 50° to 104° F (10° to 40° C) Relative Humidity 20% to 85%
<b>Regulatory</b>	Safety: ANSI/UL1950-1997, CAN/CSA C22 No. 950-95, CB ICE60950 Emissions: FCC Class B, CE (EN55022/1998, EN55024/1998), BSMI, VCCI Acoustics: Operating: 55dBA max per ISO7779

## System Requirements

<b>General Requirements</b>	CD-ROM drive for installing software, color monitor with 24-bit color capability 256 MB RAM or more
<b>PC &amp; Compatibles</b>	Pentium IV PC or higher, with USB or Hi-Speed USB (USB 2.0) port Windows Vista/XP/ 2000
<b>Macintosh</b>	Mac G3 processor or later with built-in USB or Hi-Speed USB (USB 2.0) port Mac OSX 10.3 or later



### ArtixScan M1

Includes SilverFast SE Plus with NegaFix and Multi-Exposure.

### ArtixScan M1 Pro

Includes SilverFast Ai Studio with NegaFix, Multi-Exposure, AutoIT8 color calibration and IT8 targets.



### SnapTrans™ film templates offer high-productivity film handling

Holders for 35mm slides, 35mm filmstrips, 6cm film and 4x5 inch film are included for batch scanning.

Microtek • 16941 Keegan Avenue • Carson, CA 90746

Specifications, hardware and software bundles are subject to change without notice. © 2007 Microtek. All rights reserved. ScanMaker, ArtixScan, ScanWizard, E.D.I.T., and SnapTrans are trademarks of Microtek International, Inc. SilverFast is a trademark of LaserSoft Imaging AG. Macintosh, ColorSync, and Mac OS are trademarks of Apple Inc. Windows and Windows Vista are trademarks of Microsoft Corporation. Trademarks or registered trademarks are the property of their respective owners, and Microtek disclaims any rights to the trademarks or registered trademarks of other companies.

MLIDS-ASM1-1007

**MICROTEK**  
www.microtekusa.com